

Product datasheet

Anti-Sterol carrier protein 2 antibody ab235603

2 Images

Overview

Product name	Anti-Sterol carrier protein 2 antibody
Description	Rabbit polyclonal to Sterol carrier protein 2
Host species	Rabbit
Tested applications	Suitable for: WB, IHC-P
Species reactivity	Reacts with: Human
Immunogen	Recombinant fragment corresponding to Human Sterol carrier protein 2 aa 1-143. Database link: P22307
Positive control	WB: MCF7 and A549 whole cell lysate. IHC-P: Human prostate cancer tissue.

Properties

Form	Liquid
Storage instructions	Shipped at 4°C. Store at +4°C short term (1-2 weeks). Upon delivery aliquot. Store at -20°C long term. Avoid freeze / thaw cycle.
Storage buffer	pH: 7.4 Preservative: 0.03% Proclin Constituents: PBS, 50% Glycerol
Purity	Protein G purified
Purification notes	Purity >95%.
Clonality	Polyclonal
Isotype	IgG

Applications

Our [Abpromise guarantee](#) covers the use of **ab235603** in the following tested applications.

The application notes include recommended starting dilutions; optimal dilutions/concentrations should be determined by the end user.

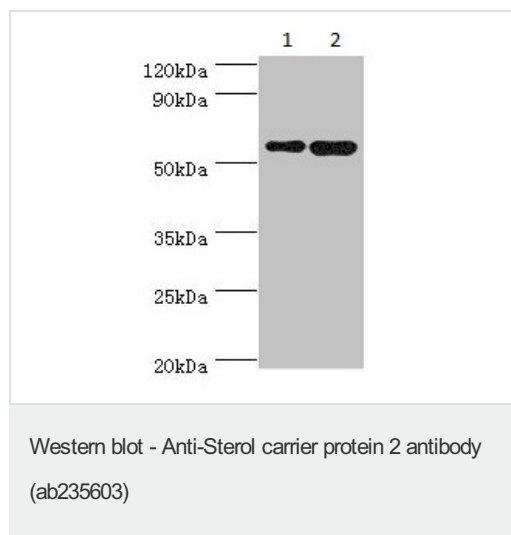
Application	Abreviews	Notes
WB		1/1000 - 1/5000. Predicted molecular weight: 59 kDa.

Application	Abreviews	Notes
IHC-P		1/20 - 1/200.

Target

Function	Mediates in vitro the transfer of all common phospholipids, cholesterol and gangliosides between membranes. May play a role in regulating steroidogenesis.
Tissue specificity	Liver, fibroblasts, and placenta.
Involvement in disease	Defects in SCP2 are a cause of leukoencephalopathy with dystonia and motor neuropathy (LDMN) [MIM:613724]; also known as sterol carrier protein 2 deficiency. LDMN is a syndrome characterized by leukoencephalopathy, dystonic head tremor, spasmodic torticollis and reduced tendon reflexes in lower extremities. Additional features include hyposmia, pathologic saccadic eye movements, a slight hypoacusis, accumulation of branched-chain pristanic acid in plasma, and the presence of abnormal bile alcohol glucuronides in urine.
Sequence similarities	In the N-terminal section; belongs to the thiolase family. Contains 1 SCP2 domain.
Cellular localization	Mitochondrion; Cytoplasm. Mitochondrion. Cytoplasmic in the liver and also associated with mitochondria especially in steroidogenic tissues and Peroxisome. Interaction with PEX5 is essential for peroxisomal import.

Images



All lanes : Anti-Sterol carrier protein 2 antibody (ab235603) at 1/1000 dilution

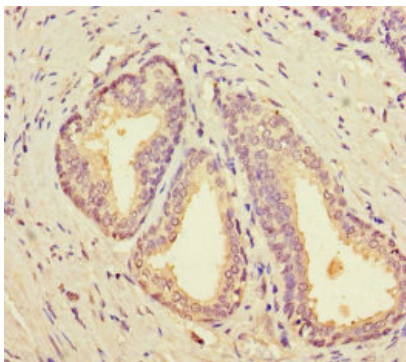
Lane 1 : A549 (human lung carcinoma cell line) whole cell lysate

Lane 2 : MCF7 (human breast adenocarcinoma cell line) whole cell lysate

Secondary

All lanes : Goat polyclonal to rabbit at 1/10000 dilution

Predicted band size: 59 kDa



Paraffin-embedded human prostate cancer tissue stained for Sterol carrier protein 2 using ab235603 at 1/100 dilution in immunohistochemical analysis.

Immunohistochemistry (Formalin/PFA-fixed paraffin-embedded sections) - Anti-Sterol carrier protein 2 antibody (ab235603)

Please note: All products are "FOR RESEARCH USE ONLY. NOT FOR USE IN DIAGNOSTIC PROCEDURES"

Our Abpromise to you: Quality guaranteed and expert technical support

- Replacement or refund for products not performing as stated on the datasheet
- Valid for 12 months from date of delivery
- Response to your inquiry within 24 hours
- We provide support in Chinese, English, French, German, Japanese and Spanish
- Extensive multi-media technical resources to help you
- We investigate all quality concerns to ensure our products perform to the highest standards

If the product does not perform as described on this datasheet, we will offer a refund or replacement. For full details of the Abpromise, please visit <https://www.abcam.com/abpromise> or contact our technical team.

Terms and conditions

- Guarantee only valid for products bought direct from Abcam or one of our authorized distributors