



Product datasheet

Anti-STK35 antibody ab237517

3 Images

Overview

Product name	Anti-STK35 antibody
Description	Rabbit polyclonal to STK35
Host species	Rabbit
Tested applications	Suitable for: WB, IHC-P, ICC/IF
Species reactivity	Reacts with: Mouse, Human
Immunogen	<p>Recombinant fragment corresponding to Human STK35 aa 1-200. Sequence:</p> <p>MGHQESPLARAPAGGAAVKRLCKGLSWREHVESH GSLGAQASPASAAAA EGSATRRARAATSRAARSRRQPGPGADHPQAGAPG GKRAARKWRCAGQVT IQGPAPPRPRAGRDEAGGARAAPLLLPPPPAAMETG KDGARRGTQSPER KRRSPVPRAPSTKLRPAAAARAMDPVAAEAPGEAFL ARRRPEGGGGSARP</p> <p>Database link: Q8TDR2</p> <p style="text-align: right;"> Run BLAST with  Run BLAST with</p>
Positive control	WB: Mouse heart, liver and brain tissue lysate. IHC-P: Human skeletal muscle tissue. ICC/IF: HepG2 cells.

Properties

Form	Liquid
Storage instructions	Shipped at 4°C. Store at +4°C short term (1-2 weeks). Upon delivery aliquot. Store at -20°C long term. Avoid freeze / thaw cycle.
Storage buffer	<p>pH: 7.4 Preservative: 0.03% Proclin Constituents: PBS, 50% Glycerol</p>
Purity	Protein G purified
Purification notes	Purity >95%
Clonality	Polyclonal

Isotype

IgG

Applications

Our [Abpromise guarantee](#) covers the use of **ab237517** in the following tested applications.

The application notes include recommended starting dilutions; optimal dilutions/concentrations should be determined by the end user.

Application	Abreviews	Notes
WB		1/500 - 1/5000.
IHC-P		1/20 - 1/200.
ICC/IF		1/50 - 1/200.

Target

Tissue specificity

Expressed in testis.

Sequence similarities

Belongs to the protein kinase superfamily. Ser/Thr protein kinase family. Contains 1 protein kinase domain.

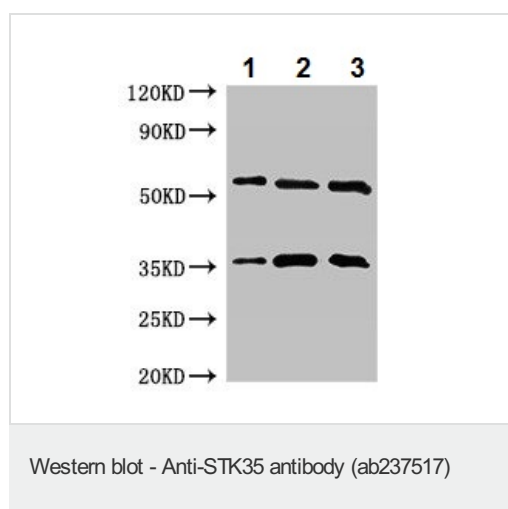
Post-translational modifications

Autophosphorylated.

Cellular localization

Nucleus. Nucleus > nucleolus. Cytoplasm. When associated with PDLIM1, it is mostly found in cytoplasm, localized to actin stress fibers (PubMed:11973348). However, PubMed:19756140 detected STK35 only in the nucleus, and the presence of PDLIM1 had no influence on its location.

Images



All lanes : Anti-STK35 antibody (ab237517) at 1/500 dilution

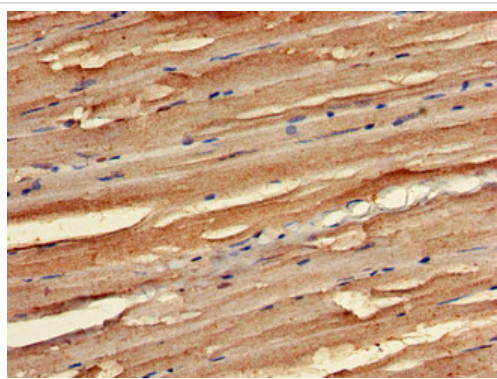
Lane 1 : Mouse heart tissue lysate

Lane 2 : Mouse liver tissue lysate

Lane 3 : Mouse brain tissue lysate

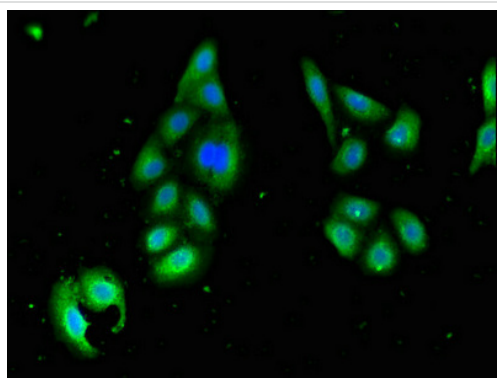
Secondary

All lanes : Goat polyclonal to rabbit IgG at 1/50000 dilution



Immunohistochemistry (Formalin/PFA-fixed paraffin-embedded sections) - Anti-STK35 antibody (ab237517)

Paraffin-embedded human skeletal muscle tissue stained for STK35 using ab237517 at 1/100 dilution in immunohistochemical analysis.



Immunocytochemistry/ Immunofluorescence - Anti-STK35 antibody (ab237517)

HepG2 (Human liver hepatocellular carcinoma cell line) cells stained for STK35 (Green) at 1/100 dilution in ICC/IF, followed by an Alexa-Fluor[®]488-conjugated Goat Anti-Rabbit IgG (H+L) secondary antibody.

Please note: All products are "FOR RESEARCH USE ONLY. NOT FOR USE IN DIAGNOSTIC PROCEDURES"

Our Abpromise to you: Quality guaranteed and expert technical support

- Replacement or refund for products not performing as stated on the datasheet
- Valid for 12 months from date of delivery
- Response to your inquiry within 24 hours
- We provide support in Chinese, English, French, German, Japanese and Spanish
- Extensive multi-media technical resources to help you
- We investigate all quality concerns to ensure our products perform to the highest standards

If the product does not perform as described on this datasheet, we will offer a refund or replacement. For full details of the Abpromise, please visit <https://www.abcam.com/abpromise> or contact our technical team.

Terms and conditions

- Guarantee only valid for products bought direct from Abcam or one of our authorized distributors