




Product datasheet

Anti-Stra8 antibody ab217380

2 Images

Overview

<b>Product name</b>	Anti-Stra8 antibody
<b>Description</b>	Rabbit polyclonal to Stra8
<b>Host species</b>	Rabbit
<b>Tested applications</b>	<b>Suitable for:</b> IHC-P, WB
<b>Species reactivity</b>	<b>Reacts with:</b> Mouse, Human <b>Predicted to work with:</b> Rat 
<b>Immunogen</b>	Synthetic peptide within Human Stra8 aa 235-280 conjugated to keyhole limpet haemocyanin. The exact sequence is proprietary. Sequence: SCSLVSTPEEILFEDAFDVASFLDKSEVPSTSSSSSVL ASCPENP  Database link: <a href="#">Q7Z7C7</a>   <a href="#">Run BLAST with</a>  <a href="#">Run BLAST with</a>
<b>Positive control</b>	Human ovary carcinoma tissue.

Properties

<b>Form</b>	Liquid
<b>Storage instructions</b>	Shipped at 4°C. Store at +4°C short term (1-2 weeks). Upon delivery aliquot. Store at -20°C long term. Avoid freeze / thaw cycle.
<b>Storage buffer</b>	Preservative: 0.09% Sodium azide Constituents: 50% Glycerol, 1% BSA
<b>Purity</b>	Protein A purified
<b>Clonality</b>	Polyclonal
<b>Isotype</b>	IgG

Applications

Our [Abpromise guarantee](#) covers the use of **ab217380** in the following tested applications.

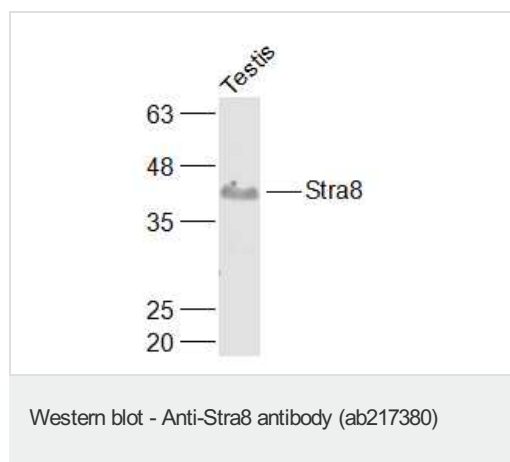
The application notes include recommended starting dilutions; optimal dilutions/concentrations should be determined by the end user.

Application	Abreviews	Notes
IHC-P		1/100 - 1/500.
WB		1/1000.

## Target

<b>Function</b>	Required for the transition into meiosis for both female and male germ cells. In female germ cells, required for premeiotic DNA replication and subsequent events in meiotic prophase.
<b>Tissue specificity</b>	Expressed specifically in testis.
<b>Post-translational modifications</b>	Phosphorylated.
<b>Cellular localization</b>	Cytoplasm.

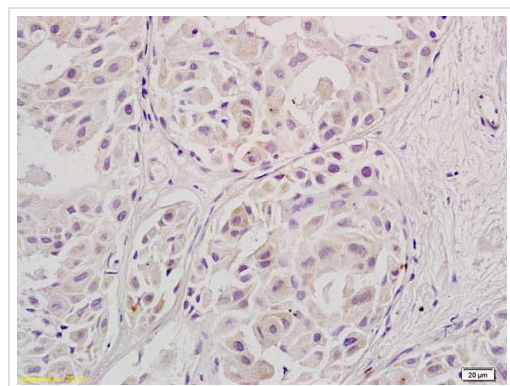
## Images



Anti-Stra8 antibody (ab217380) at 1/1000 dilution + Mouse testis lysates

### Secondary

Conjugated secondary antibody at 1/20000 dilution



Immunohistochemical analysis of formalin-fixed, paraffin-embedded human ovary carcinoma tissue labeling Stra8 with ab217380 at 1/800 dilution, followed by secondary antibody detection and DAB staining.

Immunohistochemistry (Formalin/PFA-fixed paraffin-embedded sections) - Anti-Stra8 antibody (ab217380)

**Please note:** All products are "FOR RESEARCH USE ONLY. NOT FOR USE IN DIAGNOSTIC PROCEDURES"

### **Our Abpromise to you: Quality guaranteed and expert technical support**

---

- Replacement or refund for products not performing as stated on the datasheet
- Valid for 12 months from date of delivery
- Response to your inquiry within 24 hours
  
- We provide support in Chinese, English, French, German, Japanese and Spanish
- Extensive multi-media technical resources to help you
- We investigate all quality concerns to ensure our products perform to the highest standards

If the product does not perform as described on this datasheet, we will offer a refund or replacement. For full details of the Abpromise, please visit <https://www.abcam.com/abpromise> or contact our technical team.

### **Terms and conditions**

---

- Guarantee only valid for products bought direct from Abcam or one of our authorized distributors