


## Product datasheet

# Anti-Stra8 antibody ab49602

★★★★☆ 10 Abreviews 63 References 3 Images

### Overview

---

<b>Product name</b>	Anti-Stra8 antibody
<b>Description</b>	Rabbit polyclonal to Stra8
<b>Host species</b>	Rabbit
<b>Tested applications</b>	<b>Suitable for:</b> IHC-P, WB
<b>Species reactivity</b>	<b>Reacts with:</b> Mouse <b>Predicted to work with:</b> Rat, Hamster 
<b>Immunogen</b>	Synthetic peptide corresponding to Mouse Stra8 aa 1-100. (Peptide available as <a href="#">ab49601</a> )
<b>Positive control</b>	IHC-P: Mouse testis tissue. WB: CHO Overexpressing Stra8 (Mouse) Whole Cell Lysate.
<b>General notes</b>	<p>The Life Science industry has been in the grips of a reproducibility crisis for a number of years. Abcam is leading the way in addressing this with our range of recombinant monoclonal antibodies and knockout edited cell lines for gold-standard validation. Please check that this product meets your needs before purchasing.</p> <p>If you have any questions, special requirements or concerns, please send us an inquiry and/or contact our Support team ahead of purchase. Recommended alternatives for this product can be found below, along with publications, customer reviews and Q&amp;As</p>

### Properties

---

<b>Form</b>	Liquid
<b>Storage instructions</b>	Shipped at 4°C. Store at +4°C short term (1-2 weeks). Upon delivery aliquot. Store at -20°C or -80°C. Avoid freeze / thaw cycle.
<b>Storage buffer</b>	pH: 7.40 Preservative: 0.02% Sodium azide Constituent: PBS  Batches of this product that have a concentration < 1mg/ml may have BSA added as a stabilising agent. If you would like information about the formulation of a specific lot, please contact our scientific support team who will be happy to help.
<b>Purity</b>	Immunogen affinity purified
<b>Clonality</b>	Polyclonal

Isotype

IgG

## Applications

### The Abpromise guarantee

Our [Abpromise guarantee](#) covers the use of ab49602 in the following tested applications.

The application notes include recommended starting dilutions; optimal dilutions/concentrations should be determined by the end user.

Application	Abreviews	Notes
IHC-P	★★★★★ (3)	Use a concentration of 0.1 µg/ml. Recommended use at a low concentration otherwise high background staining may be observed
WB	★★★★★ (3)	Use a concentration of 1 µg/ml. Detects a band of approximately 60 kDa (predicted molecular weight: 45 kDa). Ab49602 was tested on a dual-tagged Stra8 (Mouse) overexpression lysate predicted to run at 60 kDa.

## Target

### Function

Required for the transition into meiosis for both female and male germ cells. In female germ cells, required for premeiotic DNA replication and subsequent events in meiotic prophase.

### Tissue specificity

Expressed specifically in testis.

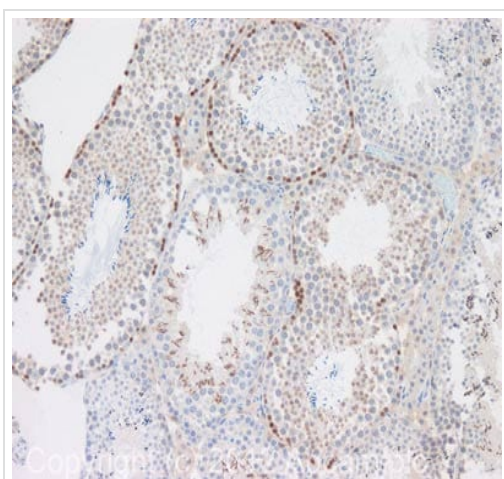
### Post-translational modifications

Phosphorylated.

### Cellular localization

Cytoplasm.

## Images



Immunohistochemistry (Formalin/PFA-fixed paraffin-embedded sections) - Anti-Stra8 antibody (ab49602)

IHC image of Stra8 staining in mouse testis formalin fixed paraffin embedded tissue section, performed on a Leica Bond™ system using the standard protocol B. The section was pre-treated using heat mediated antigen retrieval with sodium citrate buffer (pH6, epitope retrieval solution 1) for 20 mins. The section was then incubated with ab49602, 0.1 µg/ml, for 15 mins at room temperature. A goat anti-rabbit biotinylated secondary antibody was used to detect the primary, and visualized using an HRP conjugated ABC system. DAB was used as the chromogen. The section was then counterstained with haematoxylin and mounted with DPX.

For other IHC staining systems (automated and non-automated) customers should optimize variable parameters such as antigen retrieval conditions, primary antibody concentration and antibody incubation times.



Western blot - Anti-Stra8 antibody (ab49602)

**All lanes :** Anti-Stra8 antibody (ab49602) at 1 µg/ml

**Lane 1 :** CHO Overexpressing Stra8 (Mouse) Whole Cell Lysate

**Lane 2 :** CHO Negative Control Whole Cell Lysate

Lysates/proteins at 1 µl per lane.

**Secondary**

**All lanes :** Goat Anti-Rabbit IgG H&L (HRP) preadsorbed (ab97080) at 1/5000 dilution

Developed using the ECL technique.

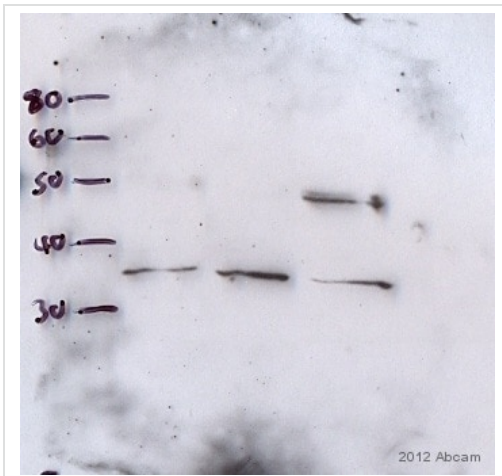
Performed under reducing conditions.

**Predicted band size:** 45 kDa

**Observed band size:** 60 kDa

**Exposure time:** 1 minute

ab49602 was tested on a dual-tagged Stra8 (Mouse) overexpression lysate predicted to run at 60 kDa.



Western blot - Anti-Stra8 antibody (ab49602)

This image is courtesy of an anonymous abreview.

**All lanes :** Anti-Stra8 antibody (ab49602) at 1/500 dilution

**Lane 1 :** WT D3 mouse ES cells cultured with LIF.

**Lane 2 :** WT D3 mouse ES cells cultured without LIF for 24 hours.

**Lane 3 :** WT D3 mouse ES cells cultured without LIF and with 1µM Retinoic acid for 24 hours.

Lysates/proteins at 200000 cells per lane.

**Secondary**

**All lanes :** Non-Abcam antibody was used: goat anti-rabbit HRP at 1/2000 dilution

Developed using the ECL technique.

Performed under reducing conditions.

**Predicted band size:** 45 kDa

**Observed band size:** 48 kDa

**Exposure time:** 1 minute

**Please note:** All products are "FOR RESEARCH USE ONLY. NOT FOR USE IN DIAGNOSTIC PROCEDURES"

### **Our Abpromise to you: Quality guaranteed and expert technical support**

---

- Replacement or refund for products not performing as stated on the datasheet
- Valid for 12 months from date of delivery
- Response to your inquiry within 24 hours
  
- We provide support in Chinese, English, French, German, Japanese and Spanish
- Extensive multi-media technical resources to help you
- We investigate all quality concerns to ensure our products perform to the highest standards

If the product does not perform as described on this datasheet, we will offer a refund or replacement. For full details of the Abpromise, please visit <https://www.abcam.com/abpromise> or contact our technical team.

### **Terms and conditions**

---

- Guarantee only valid for products bought direct from Abcam or one of our authorized distributors