

Product datasheet

Anti-Sulfite oxidase antibody [EPR7618] ab129094

Recombinant RabMAb

1 References 3 Images

Overview

<b>Product name</b>	Anti-Sulfite oxidase antibody [EPR7618]
<b>Description</b>	Rabbit monoclonal [EPR7618] to Sulfite oxidase
<b>Host species</b>	Rabbit
<b>Tested applications</b>	<b>Suitable for:</b> WB, IP, IHC-P, Flow Cyt <b>Unsuitable for:</b> ICC/IF
<b>Species reactivity</b>	<b>Reacts with:</b> Rat, Human
<b>Immunogen</b>	Synthetic peptide corresponding to Human Sulfite oxidase aa 150-250. Database link: <a href="#">P51687</a>
<b>Positive control</b>	Fetal kidney, HepG2, and 293T cell lysates, Human liver tissue
<b>General notes</b>	Mouse: We have preliminary internal testing data to indicate this antibody may not react with this species. Please contact us for more information.

Previously labelled as SUOX.

This product is a recombinant monoclonal antibody, which offers several advantages including:

- High batch-to-batch consistency and reproducibility
- Improved sensitivity and specificity
- Long-term security of supply
- Animal-free production

For more information [see here](#).

Our RabMAb<sup>®</sup> technology is a patented hybridoma-based technology for making rabbit monoclonal antibodies. For details on our patents, please refer to [RabMAb<sup>®</sup> patents](#).

Properties

<b>Form</b>	Liquid
<b>Storage instructions</b>	Shipped at 4°C. Store at -20°C. Stable for 12 months at -20°C.
<b>Dissociation constant (K<sub>D</sub>)</b>	K <sub>D</sub> = 2.90 x 10 <sup>-11</sup> M





[Learn more about K<sub>D</sub>](#)

<b>Storage buffer</b>	pH: 7.20 Preservative: 0.01% Sodium azide Constituents: 9% PBS, 40% Glycerol, 0.05% BSA, 50% Tissue culture supernatant
<b>Purity</b>	Tissue culture supernatant
<b>Clonality</b>	Monoclonal
<b>Clone number</b>	EPR7618
<b>Isotype</b>	IgG

## Applications

Our [Abpromise guarantee](#) covers the use of **ab129094** in the following tested applications.

The application notes include recommended starting dilutions; optimal dilutions/concentrations should be determined by the end user.

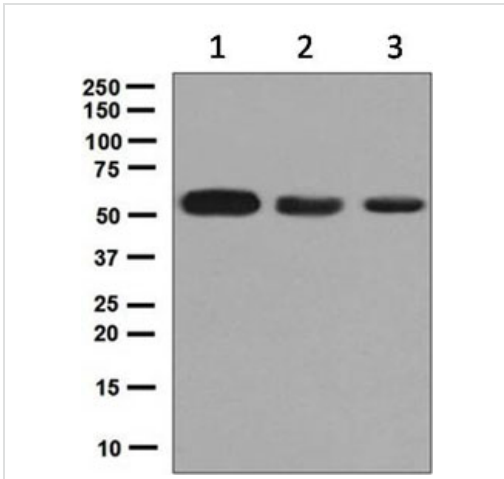
Application	Abreviews	Notes
WB		1/10000 - 1/50000. Detects a band of approximately 60 kDa (predicted molecular weight: 60 kDa).
IP		1/10 - 1/100.
IHC-P		1/50 - 1/100. Perform heat mediated antigen retrieval before commencing with IHC staining protocol.
Flow Cyt		1/10 - 1/100. <a href="#">ab172730</a> - Rabbit monoclonal IgG, is suitable for use as an isotype control with this antibody.

**Application notes** Is unsuitable for ICC/IF.

## Target

<b>Pathway</b>	Energy metabolism; sulfur metabolism.
<b>Involvement in disease</b>	Defects in SUOX are the cause of isolated sulfite oxidase deficiency (ISOD) [MIM:272300]; also known as sulfocysteinuria. ISOD is characterized by neurological abnormalities including multicystic leukoencephalopathy with brain atrophy. Patients often suffer from seizures. Often leads to death at an early age.
<b>Sequence similarities</b>	Contains 1 cytochrome b5 heme-binding domain.
<b>Cellular localization</b>	Mitochondrion intermembrane space.

## Images



Western blot - Anti-Sulfite oxidase antibody [EPR7618] (ab129094)

**All lanes :** Anti-Sulfite oxidase antibody [EPR7618] (ab129094) at 1/10000 dilution

**Lane 1 :** Human fetal kidney cell lysates

**Lane 2 :** HepG2 cell lysates

**Lane 3 :** 293T cell lysates

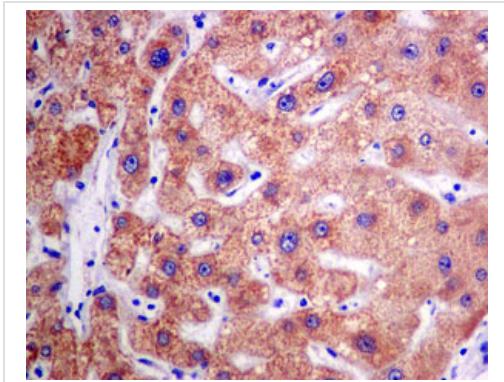
Lysates/proteins at 10 µg per lane.

**Secondary**

**All lanes :** HRP labelled goat anti-rabbit at 1/2000 dilution

**Predicted band size:** 60 kDa

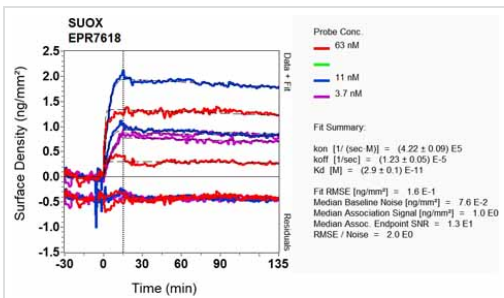
**Observed band size:** 60 kDa



Immunohistochemistry (Formalin/PFA-fixed paraffin-embedded sections) - Anti-Sulfite oxidase antibody [EPR7618] (ab129094)

ab129094, at a 1/50 dilution, staining Sulfite oxidase in paraffin embedded Human liver tissue by Immunohistochemistry.

Perform heat mediated antigen retrieval before commencing with IHC staining protocol.



Other - Anti-Sulfite oxidase antibody [EPR7618] (ab129094)

Equilibrium disassociation constant ( $K_D$ )

Learn more about  $K_D$

[Click here to learn more about  \$K\_D\$](#)

**Please note:** All products are "FOR RESEARCH USE ONLY. NOT FOR USE IN DIAGNOSTIC PROCEDURES"

### **Our Abpromise to you: Quality guaranteed and expert technical support**

---

- Replacement or refund for products not performing as stated on the datasheet
- Valid for 12 months from date of delivery
- Response to your inquiry within 24 hours
  
- We provide support in Chinese, English, French, German, Japanese and Spanish
- Extensive multi-media technical resources to help you
- We investigate all quality concerns to ensure our products perform to the highest standards

If the product does not perform as described on this datasheet, we will offer a refund or replacement. For full details of the Abpromise, please visit <https://www.abcam.com/abpromise> or contact our technical team.

### **Terms and conditions**

---

- Guarantee only valid for products bought direct from Abcam or one of our authorized distributors