




Product datasheet

Anti-Sumo 2 antibody ab233222

1 References 5 Images

Overview

Product name	Anti-Sumo 2 antibody
Description	Rabbit polyclonal to Sumo 2
Host species	Rabbit
Tested applications	Suitable for: WB, IHC-P
Species reactivity	Reacts with: Human, Pig Predicted to work with: Mouse, Rat, Chicken, Cow, Xenopus laevis, Zebrafish, Cynomolgus monkey, Chinese hamster, Xenopus tropicalis 
Immunogen	Recombinant full length protein corresponding to Human Sumo 2 aa 1-95. N-terminal His-tag and GST-tag. Expressed in E.coli. Sequence: MADEKPKEGVKTENNDHINLKVAGQDGSVVQFKIKRHTPL SKLMKAYCER QGLSMRQIRFRFDGQPINETDTPAQLEMEDEDITIDVFQQQ TGGVY Database link: P61956  Run BLAST with  Run BLAST with
Positive control	WB: Recombinant human Sumo 2 proteim; Pig liver and cerebrum tissue lysates; HeLa whole cell lysate (ab150035). IHC-P: Human lung tissue.
General notes	Reproducibility is key to advancing scientific discovery and accelerating scientists' next breakthrough. Abcam is leading the way with our range of recombinant antibodies, knockout-validated antibodies and knockout cell lines, all of which support improved reproducibility. We are also planning to innovate the way in which we present recommended applications and species on our product datasheets, so that only applications & species that have been tested in our own labs, our suppliers or by selected trusted collaborators are covered by our Abpromise™ guarantee. In preparation for this, we have started to update the applications & species that this product is Abpromise guaranteed for. We are also updating the applications & species that this product has been “predicted to work with,” however this information is not covered by our Abpromise guarantee. Applications & species from publications and Abreviews that have not been tested in our own

labs or in those of our suppliers are not covered by the Abpromise guarantee.

Please check that this product meets your needs before purchasing. If you have any questions, special requirements or concerns, please send us an inquiry and/or contact our Support team ahead of purchase. Recommended alternatives for this product can be found below, as well as customer reviews and Q&As.

Properties

Form	Liquid
Storage instructions	Shipped at 4°C. Store at +4°C short term (1-2 weeks). Upon delivery aliquot. Store at -20°C long term. Avoid freeze / thaw cycle.
Storage buffer	pH: 7.40 Preservative: 0.02% Sodium azide Constituents: PBS, 50% Glycerol
Purity	Protein A purified
Purification notes	Antigen-specific affinity chromatography followed by Protein A affinity chromatography.
Clonality	Polyclonal
Isotype	IgG

Applications

Our [Abpromise guarantee](#) covers the use of **ab233222** in the following tested applications.

The application notes include recommended starting dilutions; optimal dilutions/concentrations should be determined by the end user.

Application	Abreviews	Notes
WB		Use a concentration of 0.2 - 2 µg/ml. Predicted molecular weight: 11 kDa.
IHC-P		Use a concentration of 5 - 20 µg/ml.

Target

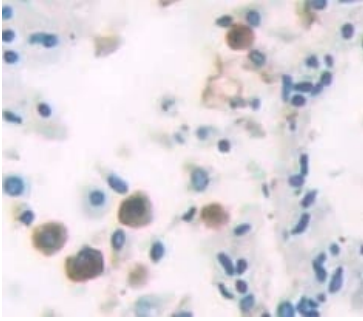
Function	Ubiquitin-like protein that can be covalently attached to proteins as a monomer or as a lysine-linked polymer. Covalent attachment via an isopeptide bond to its substrates requires prior activation by the E1 complex SAE1-SAE2 and linkage to the E2 enzyme UBE2I, and can be promoted by an E3 ligase such as PIAS1-4, RANBP2 or CBX4. This post-translational modification on lysine residues of proteins plays a crucial role in a number of cellular processes such as nuclear transport, DNA replication and repair, mitosis and signal transduction. Polymeric SUMO2 chains are also susceptible to polyubiquitination which functions as a signal for proteasomal degradation of modified proteins.
Tissue specificity	Broadly expressed.
Sequence similarities	Belongs to the ubiquitin family. SUMO subfamily. Contains 1 ubiquitin-like domain.
Post-translational modifications	Polymeric chains can be formed through Lys-11 cross-linking. Polymeric SUMO2 chains undergo 'Lys-6'-, 'Lys-11'-, 'Lys-48'- and 'Lys-63'-linked polyubiquitination by RNF4.

Cleavage of precursor form by SENP1 or SENP2 is necessary for function.

Cellular localization

Nucleus. Nuclear bodies.

Images



Immunohistochemistry (Formalin/PFA-fixed paraffin-embedded sections) - Anti-Sumo 2 antibody (ab233222)

Formalin-fixed, paraffin-embedded human lung tissue stained for Sumo 2 using ab233222 at 20 µg/ml in immunohistochemical analysis. DAB staining.



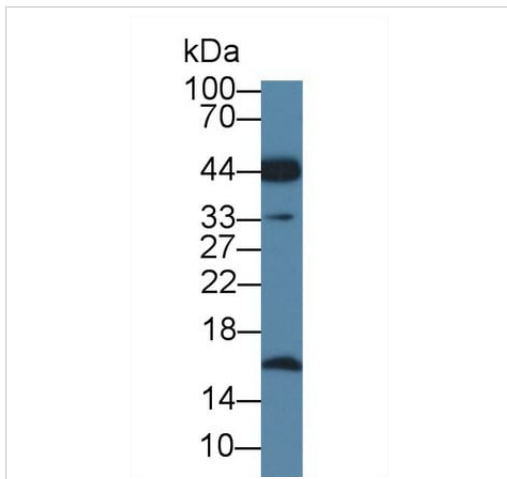
Western blot - Anti-Sumo 2 antibody (ab233222)

Anti-Sumo 2 antibody (ab233222) at 1 µg/ml + Pig liver lysate

Secondary

HRP-Linked Goat Anti-Rabbit IgG Polyclonal at 0.2 µg/ml

Predicted band size: 11 kDa



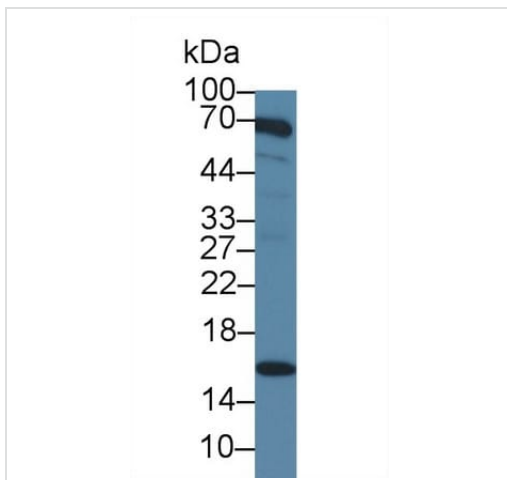
Western blot - Anti-Sumo 2 antibody (ab233222)

Anti-Sumo 2 antibody (ab233222) at 1 µg/ml + Pig cerebrum lysate

Secondary

HRP-Linked Goat Anti-Rabbit IgG Polyclonal at 0.2 µg/ml

Predicted band size: 11 kDa



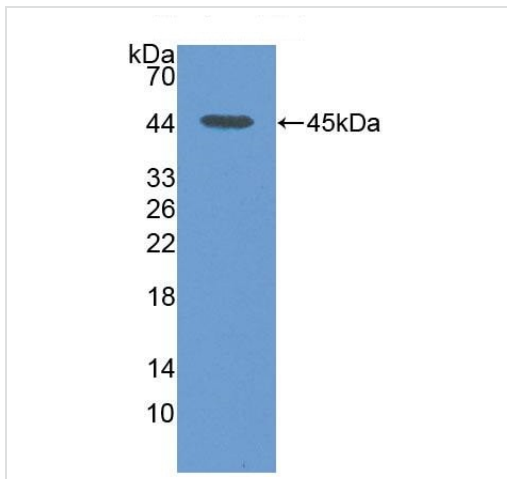
Western blot - Anti-Sumo 2 antibody (ab233222)

Anti-Sumo 2 antibody (ab233222) at 2 µg/ml + HeLa (human epithelial cell line from cervix adenocarcinoma) cell lysate

Secondary

HRP-Linked Goat Anti-Rabbit IgG Polyclonal at 0.2 µg/ml

Predicted band size: 11 kDa



Western blot - Anti-Sumo 2 antibody (ab233222)

Anti-Sumo 2 antibody (ab233222) at 2 µg/ml + Recombinant human Sumo 2 protein

Predicted band size: 11 kDa

Please note: All products are "FOR RESEARCH USE ONLY. NOT FOR USE IN DIAGNOSTIC PROCEDURES"

Our Abpromise to you: Quality guaranteed and expert technical support

- Replacement or refund for products not performing as stated on the datasheet
- Valid for 12 months from date of delivery
- Response to your inquiry within 24 hours

- We provide support in Chinese, English, French, German, Japanese and Spanish
- Extensive multi-media technical resources to help you
- We investigate all quality concerns to ensure our products perform to the highest standards

If the product does not perform as described on this datasheet, we will offer a refund or replacement. For full details of the Abpromise, please visit <https://www.abcam.com/abpromise> or contact our technical team.

Terms and conditions

- Guarantee only valid for products bought direct from Abcam or one of our authorized distributors