

Product datasheet

Anti-Sumo 3 antibody [1H9L17] ab203570

Recombinant

5 Images

Overview

Product name	Anti-Sumo 3 antibody [1H9L17]
Description	Rabbit monoclonal [1H9L17] to Sumo 3
Host species	Rabbit
Tested applications	Suitable for: ICC/IF, Flow Cyt, IHC-P, WB
Species reactivity	Reacts with: Mouse, Rat, Human
Immunogen	Synthetic peptide corresponding to Human Sumo 3 aa 91-103. Sequence: GGVPESLAGHSF Database link: P55854 Run BLAST with Run BLAST with
Positive control	Jurkat and U2OS cells; Human colon carcinoma tissue; Mouse brain, testis and lung tissue lysates; Rat brain and testis tissue lysates; PC12 cell lysate.
General notes	<p>Reproducibility is key to advancing scientific discovery and accelerating scientists' next breakthrough.</p> <p>Abcam is leading the way with our range of recombinant antibodies, knockout-validated antibodies and knockout cell lines, all of which support improved reproducibility.</p> <p>We are also planning to innovate the way in which we present recommended applications and species on our product datasheets, so that only applications & species that have been tested in our own labs, our suppliers or by selected trusted collaborators are covered by our Abpromise™ guarantee.</p> <p>In preparation for this, we have started to update the applications & species that this product is Abpromise guaranteed for.</p> <p>We are also updating the applications & species that this product has been “predicted to work with,” however this information is not covered by our Abpromise guarantee.</p> <p>Applications & species from publications and Abreviews that have not been tested in our own labs or in those of our suppliers are not covered by the Abpromise guarantee.</p> <p>Please check that this product meets your needs before purchasing. If you have any questions, special requirements or concerns, please send us an inquiry and/or contact our Support team ahead of purchase. Recommended alternatives for this product can be found below, as well as customer reviews and Q&As.</p>

Properties

Form	Liquid
Storage instructions	Shipped at 4°C. Store at +4°C short term (1-2 weeks). Upon delivery aliquot. Store at -20°C long term. Avoid freeze / thaw cycle.
Storage buffer	Preservative: 0.09% Sodium azide Constituent: 99% PBS
Purity	Protein A purified
Clonality	Monoclonal
Clone number	1H9L17
Isotype	IgG

Applications

Our [Abpromise guarantee](#) covers the use of **ab203570** in the following tested applications.

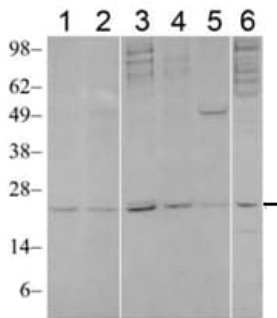
The application notes include recommended starting dilutions; optimal dilutions/concentrations should be determined by the end user.

Application	Abreviews	Notes
ICC/IF		Use a concentration of 4 - 6 µg/ml.
Flow Cyt		Use at an assay dependent concentration. Use at 0.5-1 µg/test
IHC-P		Use a concentration of 4 - 6 µg/ml. Perform heat mediated antigen retrieval with Tris/EDTA buffer pH 9.0 before commencing with IHC staining protocol.
WB		Use a concentration of 2 - 3 µg/ml. Predicted molecular weight: 11 kDa.

Target

Function	Ubiquitin-like protein which can be covalently attached to target lysines either as a monomer or as a lysine-linked polymer. Does not seem to be involved in protein degradation and may function as an antagonist of ubiquitin in the degradation process. Plays a role in a number of cellular processes such as nuclear transport, DNA replication and repair, mitosis and signal transduction. Covalent attachment to its substrates requires prior activation by the E1 complex SAE1-SAE2 and linkage to the E2 enzyme UBE2I, and can be promoted by an E3 ligase such as PIAS1-4, RANBP2 or CBX4.
Tissue specificity	Expressed predominantly in liver.
Sequence similarities	Belongs to the ubiquitin family. SUMO subfamily. Contains 1 ubiquitin-like domain.
Post-translational modifications	Polymeric chains can be formed through Lys-11 cross-linking. Cleavage of precursor form by SENP1, SENP2 or SENP5 is necessary for function.
Cellular localization	Cytoplasm.

Images



Western blot - Anti-Sumo 3 antibody [1H9L17]
(ab203570)

All lanes : Anti-Sumo 3 antibody [1H9L17] (ab203570) at 2 µg/ml

Lane 1 : Mouse brain tissue lysate

Lane 2 : Mouse lung tissue lysate

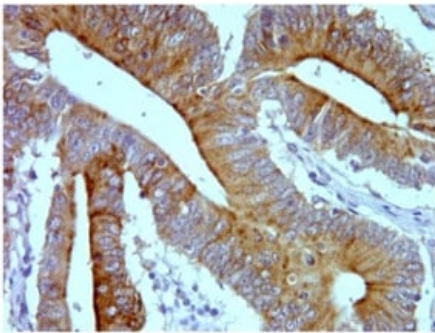
Lane 3 : Mouse testis tissue lysate

Lane 4 : PC12 cell lysate

Lane 5 : Rat brain tissue lysate

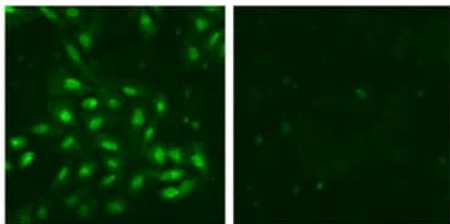
Lane 6 : Rat testis tissue lysate

Predicted band size: 11 kDa



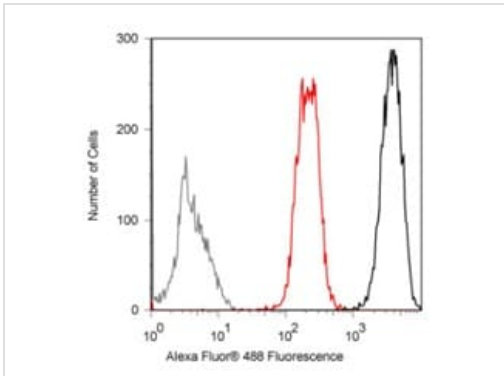
Immunohistochemistry (Formalin/PFA-fixed paraffin-
embedded sections) - Anti-Sumo 3 antibody
[1H9L17] (ab203570)

Immunohistochemical analysis of formalin fixed, paraffin embedded
Human colon carcinoma tissue labeling Sumo 3 using ab203570 at
5 µg/mL, followed by DAB detection.



Immunocytochemistry/ Immunofluorescence - Anti-
Sumo 3 antibody [1H9L17] (ab203570)





Immunofluorescent analysis of U2OS cells labeling Sumo 3 using
ab203570 at 5 µg/mL (left image). Right image: sample with
immunogenic phosphopeptide. Alexa Fluor® 488 Goat anti-Rabbit
at 1/1000 dilution was used as secondary antibody.



Flow Cytometry - Anti-Sumo 3 antibody [1H9L17]
(ab203570)

Flow cytometric analysis of fixed and permeabilized Jurkat cells labeling Sumo 3 using ab203570 at 0.5 µg/test (Black) followed by secondary detection with Alexa Fluor® 488 Goat anti-Rabbit. Cells incubated without primary antibody (grey) for control. Preincubation with immunizing peptide decreased the staining (red).

Why choose a recombinant antibody?

 Research with confidence Consistent and reproducible results	 Long-term and scalable supply Recombinant technology
 Success from the first experiment Confirmed specificity	 Ethical standards compliant Animal-free production

Anti-Sumo 3 antibody [1H9L17] (ab203570)

Please note: All products are "FOR RESEARCH USE ONLY. NOT FOR USE IN DIAGNOSTIC PROCEDURES"

Our Abpromise to you: Quality guaranteed and expert technical support

- Replacement or refund for products not performing as stated on the datasheet
- Valid for 12 months from date of delivery
- Response to your inquiry within 24 hours
- We provide support in Chinese, English, French, German, Japanese and Spanish
- Extensive multi-media technical resources to help you
- We investigate all quality concerns to ensure our products perform to the highest standards

If the product does not perform as described on this datasheet, we will offer a refund or replacement. For full details of the Abpromise, please visit <https://www.abcam.com/abpromise> or contact our technical team.

Terms and conditions

- Guarantee only valid for products bought direct from Abcam or one of our authorized distributors