

Product datasheet

Anti-Sumo 3 antibody ab34661

[1 References](#) [2 Images](#)

Overview

Product name	Anti-Sumo 3 antibody
Description	Rabbit polyclonal to Sumo 3
Host species	Rabbit
Tested applications	Suitable for: WB
Species reactivity	Reacts with: Human
Immunogen	Recombinant full length protein (Human)
Positive control	Recombinant human Sumo 3 protein (ab3802) can be used as a positive control in WB. Human SUMO 3

General notes

Reproducibility is key to advancing scientific discovery and accelerating scientists' next breakthrough.

Abcam is leading the way with our range of recombinant antibodies, knockout-validated antibodies and knockout cell lines, all of which support improved reproducibility.

We are also planning to innovate the way in which we present recommended applications and species on our product datasheets, so that only applications & species that have been tested in our own labs, our suppliers or by selected trusted collaborators are covered by our Abpromise™ guarantee.

In preparation for this, we have started to update the applications & species that this product is Abpromise guaranteed for.

We are also updating the applications & species that this product has been “predicted to work with,” however this information is not covered by our Abpromise guarantee.

Applications & species from publications and Abreviews that have not been tested in our own labs or in those of our suppliers are not covered by the Abpromise guarantee.

Please check that this product meets your needs before purchasing. If you have any questions, special requirements or concerns, please send us an inquiry and/or contact our Support team ahead of purchase. Recommended alternatives for this product can be found below, as well as customer reviews and Q&As.

Properties

Form	Liquid
Storage instructions	Shipped at 4°C. Upon delivery aliquot and store at -20°C or -80°C. Avoid repeated freeze / thaw

cycles.

Storage buffer

Preservative: 0.01% Sodium azide
Constituents: 0.42% Potassium phosphate, 0.87% Sodium chloride

Purity

IgG fraction

Purification notes

This product is an IgG fraction antibody purified from monospecific antiserum by a multi-step process which includes delipidation, salt fractionation and ion exchange chromatography followed by extensive dialysis against the buffer stated buffer.

Clonality

Polyclonal

Isotype

IgG

Applications

Our [Abpromise guarantee](#) covers the use of **ab34661** in the following tested applications.

The application notes include recommended starting dilutions; optimal dilutions/concentrations should be determined by the end user.

Application	Abreviews	Notes
WB		1/500 - 1/2000. Detects a band of approximately 11.6 kDa (predicted molecular weight: 11 kDa).

Target

Function

Ubiquitin-like protein which can be covalently attached to target lysines either as a monomer or as a lysine-linked polymer. Does not seem to be involved in protein degradation and may function as an antagonist of ubiquitin in the degradation process. Plays a role in a number of cellular processes such as nuclear transport, DNA replication and repair, mitosis and signal transduction. Covalent attachment to its substrates requires prior activation by the E1 complex SAE1-SAE2 and linkage to the E2 enzyme UBE2I, and can be promoted by an E3 ligase such as PIAS1-4, RANBP2 or CBX4.

Tissue specificity

Expressed predominantly in liver.

Sequence similarities

Belongs to the ubiquitin family. SUMO subfamily.
Contains 1 ubiquitin-like domain.

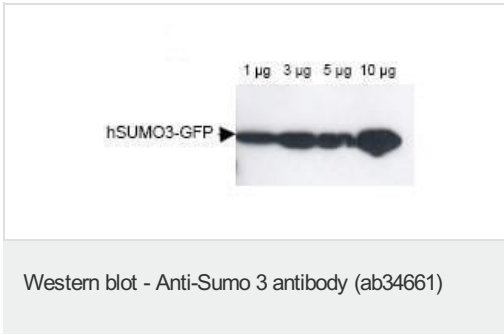
Post-translational modifications

Polymeric chains can be formed through Lys-11 cross-linking.
Cleavage of precursor form by SENP1, SENP2 or SENP5 is necessary for function.

Cellular localization

Cytoplasm.

Images



All lanes : Anti-Sumo 3 antibody (ab34661) at 1/1000 dilution (5% non-fat dry milk in TTBS)

Lane 1 : Human GFP SUMO 3 at 1 µg with blocked for 1 hour with 5% non-fat dry milk in TTBS

Lane 2 : Human GFP SUMO 3 at 3 µg with blocked for 1 hour with 5% non-fat dry milk in TTBS

Lane 3 : Human GFP SUMO 3 at 5 µg with blocked for 1 hour with 5% non-fat dry milk in TTBS

Lane 4 : Human GFP SUMO 3 at 10 µg with blocked for 1 hour with 5% non-fat dry milk in TTBS

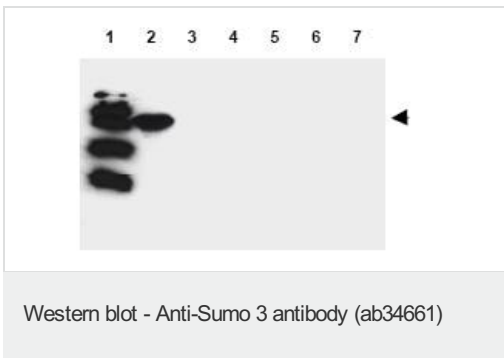
Secondary

All lanes : Donkey anti rabbit IgG at 1/1000 dilution

Predicted band size: 11 kDa

Observed band size: 11.6 kDa

[why is the actual band size different from the predicted?](#)



All lanes : Anti-Sumo 3 antibody (ab34661) at 1/1000 dilution (in 5% non-fat dry milk in TTBS)

Lane 1 : MW marker

Lane 2 : GFP human SUMO 3 at 5 µg with blocking for 1 hour with 5% non-fat dry milk in TTBS

Lane 3 : GFP human SUMO 1 at 5 µg with blocking for 1 hour with 5% non-fat dry milk in TTBS

Lane 4 : GFP yeast SUMO at 5 µg with blocking for 1 hour with 5% non-fat dry milk in TTBS

Lane 5 : GFP Arabidopsis thaliana SUMO 1 at 5 µg with blocking for 1 hour with 5% non-fat dry milk in TTBS

Lane 6 : GFP Arabidopsis thaliana SUMO 2 at 5 µg with blocking for 1 hour with 5% non-fat dry milk in TTBS

Lane 7 : GFP tomato SUMO at 5 µg with blocking for 1 hour with 5% non-fat dry milk in TTBS

Secondary

All lanes : Donkey anti-rabbit IgG at 1/1000 dilution

Predicted band size: 11 kDa

Observed band size: 11.6 kDa [why is the actual band size](#)

[different from the predicted?](#)

Please note: All products are "FOR RESEARCH USE ONLY. NOT FOR USE IN DIAGNOSTIC PROCEDURES"

Our Abpromise to you: Quality guaranteed and expert technical support

- Replacement or refund for products not performing as stated on the datasheet
- Valid for 12 months from date of delivery
- Response to your inquiry within 24 hours

- We provide support in Chinese, English, French, German, Japanese and Spanish
- Extensive multi-media technical resources to help you
- We investigate all quality concerns to ensure our products perform to the highest standards

If the product does not perform as described on this datasheet, we will offer a refund or replacement. For full details of the Abpromise, please visit <https://www.abcam.com/abpromise> or contact our technical team.

Terms and conditions

- Guarantee only valid for products bought direct from Abcam or one of our authorized distributors