

## Product datasheet

# Anti-SUN2 antibody [EPR6556] ab133591

Recombinant RabMAb

[1 References](#) [3 Images](#)

### Overview

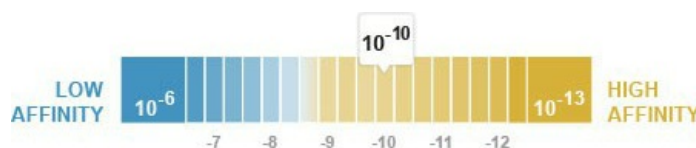
<b>Product name</b>	Anti-SUN2 antibody [EPR6556]
<b>Description</b>	Rabbit monoclonal [EPR6556] to SUN2
<b>Host species</b>	Rabbit
<b>Tested applications</b>	<b>Suitable for:</b> WB, IP <b>Unsuitable for:</b> Flow Cyt, ICC or IHC-P
<b>Species reactivity</b>	<b>Reacts with:</b> Human
<b>Immunogen</b>	Synthetic peptide within Human SUN2 aa 250-350 (internal sequence). The exact sequence is proprietary.
<b>Positive control</b>	Human fetal muscle tissue lysate; Saos-2, HeLa and HepG2 cell lysates
<b>General notes</b>	Mouse, Rat: We have preliminary internal testing data to indicate this antibody may not react with these species. Please contact us for more information.

Our RabMAb<sup>®</sup> technology is a patented hybridoma-based technology for making rabbit monoclonal antibodies. For details on our patents, please refer to [RabMAb<sup>®</sup> patents](#).

This product is a [recombinant rabbit monoclonal antibody](#).

### Properties

<b>Form</b>	Liquid
<b>Storage instructions</b>	Shipped at 4°C. Store at -20°C. Stable for 12 months at -20°C.
<b>Dissociation constant (K<sub>D</sub>)</b>	K <sub>D</sub> = 1.01 x 10 <sup>-10</sup> M



[Learn more about K<sub>D</sub>](#)

<b>Storage buffer</b>	pH: 7.20 Preservative: 0.01% Sodium azide Constituents: 9% PBS, 40% Glycerol, 0.05% BSA, 50% Tissue culture supernatant
-----------------------	-------------------------------------------------------------------------------------------------------------------------------

<b>Purity</b>	Tissue culture supernatant
<b>Clonality</b>	Monoclonal
<b>Clone number</b>	EPR6556
<b>Isotype</b>	IgG

## Applications

Our [Abpromise guarantee](#) covers the use of **ab133591** in the following tested applications.

The application notes include recommended starting dilutions; optimal dilutions/concentrations should be determined by the end user.

Application	Abreviews	Notes
WB		1/1000 - 1/10000. Predicted molecular weight: 80 kDa.
IP		1/10 - 1/100.

**Application notes** Is unsuitable for Flow Cyt, ICC or IHC-P.

## Target

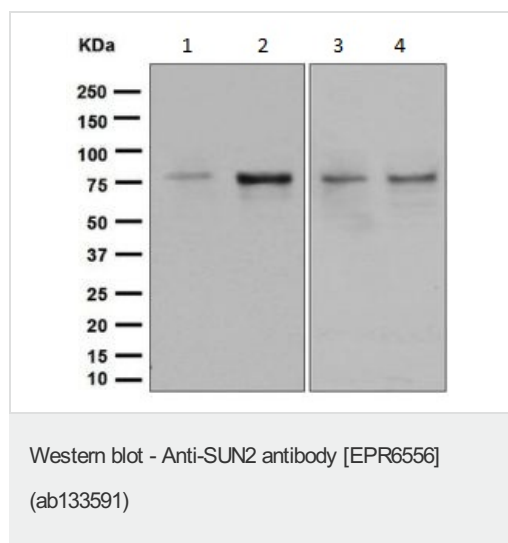
### Relevance

SUN proteins form part of the LINC complex - a protein bridge that spans the nuclear envelope linking the nucleoskeleton to the actin cytoskeleton. They are located on the inner nuclear membrane side of the complex. The LINC complex is thought to function in controlling nuclear position, contributing to mechanical resistance and the overall architecture of the cell. SUN2 can exist in a heterodimer with SUN1. Both can interact with lamins and nesprins in the nuclear envelope.

### Cellular localization

Nuclear membrane, endosome membrane, mitotic spindle organization.

## Images



**All lanes** : Anti-SUN2 antibody [EPR6556] (ab133591) at 1/1000 dilution

**Lane 1** : Human fetal muscle tissue lysate

**Lane 2** : Saos 2 cell lysate

**Lane 3** : HeLa cell lysate

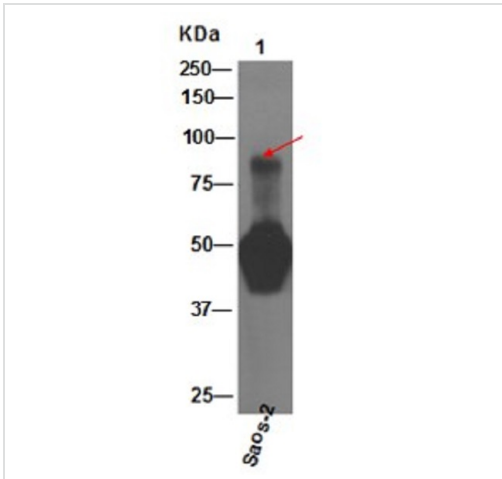
**Lane 4** : HepG cell lysate

Lysates/proteins at 10 µg per lane.

### Secondary

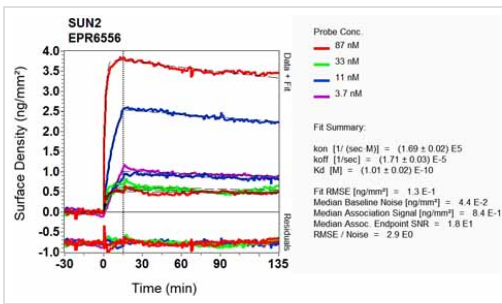
**All lanes** : HRP labelled Goat anti-Rabbit IgG at 1/2000 dilution

**Predicted band size:** 80 kDa



Immunoprecipitation - Anti-SUN2 antibody  
[EPR6556] (ab133591)

ab133591 at 1/30 dilution immunoprecipitating SUN2 in Saos-2 (human osteosarcoma) cell lysate. Total sample is 300µg. The large spread out band at 50 kDa is Rabbit IgG heavy chain.



Other - Anti-SUN2 antibody [EPR6556] (ab133591)

Equilibrium dissociation constant ( $K_D$ )

Learn more about  $K_D$

[Click here to learn more about  \$K\_D\$](#)

**Please note:** All products are "FOR RESEARCH USE ONLY. NOT FOR USE IN DIAGNOSTIC PROCEDURES"

### Our Abpromise to you: Quality guaranteed and expert technical support

- Replacement or refund for products not performing as stated on the datasheet
- Valid for 12 months from date of delivery
- Response to your inquiry within 24 hours
- We provide support in Chinese, English, French, German, Japanese and Spanish
- Extensive multi-media technical resources to help you
- We investigate all quality concerns to ensure our products perform to the highest standards

If the product does not perform as described on this datasheet, we will offer a refund or replacement. For full details of the Abpromise, please visit <https://www.abcam.com/abpromise> or contact our technical team.

### Terms and conditions

- Guarantee only valid for products bought direct from Abcam or one of our authorized distributors