

## Product datasheet

# Anti-SVCT1 antibody ab236878

3 Images

### Overview

<b>Product name</b>	Anti-SVCT1 antibody
<b>Description</b>	Rabbit polyclonal to SVCT1
<b>Host species</b>	Rabbit
<b>Tested applications</b>	<b>Suitable for:</b> WB, IHC-P, ICC/IF
<b>Species reactivity</b>	<b>Reacts with:</b> Mouse, Human
<b>Immunogen</b>	Recombinant fragment corresponding to Human SVCT1 aa 173-259. Database link: <a href="#">Q9UHI7</a>
<b>Positive control</b>	WB: A549 whole cell lysate; Mouse kidney and liver tissue lysate. IHC-P: Human small intestine tissue. ICC/IF: A549 cells.
<b>General notes</b>	Previously labelled as SLC23A1.

### Properties

<b>Form</b>	Liquid
<b>Storage instructions</b>	Shipped at 4°C. Store at +4°C short term (1-2 weeks). Upon delivery aliquot. Store at -20°C long term. Avoid freeze / thaw cycle.
<b>Storage buffer</b>	pH: 7.4 Preservative: 0.03% Proclin Constituents: 50% Glycerol, PBS
<b>Purity</b>	Protein G purified
<b>Purification notes</b>	Purity >95%.
<b>Clonality</b>	Polyclonal
<b>Isotype</b>	IgG

### Applications

Our [Abpromise guarantee](#) covers the use of **ab236878** in the following tested applications.

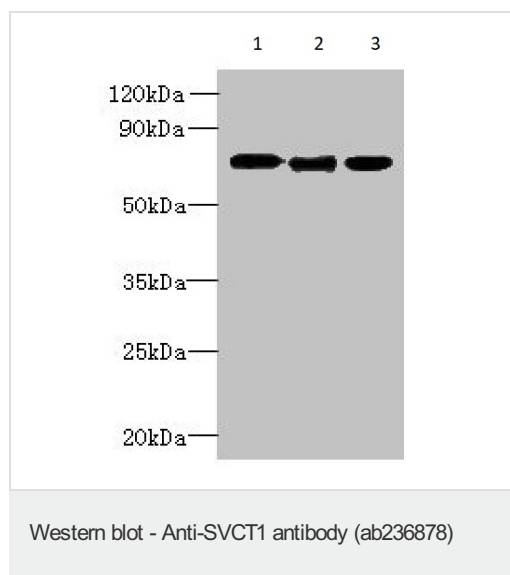
The application notes include recommended starting dilutions; optimal dilutions/concentrations should be determined by the end user.

Application	Abreviews	Notes
WB		1/500 - 1/2000.
IHC-P		1/20 - 1/200.
ICC/IF		1/50 - 1/200.

## Target

<b>Function</b>	Sodium/ascorbate cotransporter. Mediates electrogenic uptake of vitamin C, with a stoichiometry of 2 Na(+) for each ascorbate.
<b>Tissue specificity</b>	Highly expressed in adult small intestine, kidney, thymus, ovary, colon, prostate and liver, and in fetal kidney, liver and thymus.
<b>Sequence similarities</b>	Belongs to the xanthine/uracil permease family. Nucleobase:cation symporter-2 (NCS2) (TC 2.A.40) subfamily.
<b>Post-translational modifications</b>	Phosphorylated.
<b>Cellular localization</b>	Membrane.

## Images



**All lanes** : Anti-SVCT1 antibody (ab236878) at 1/500 dilution

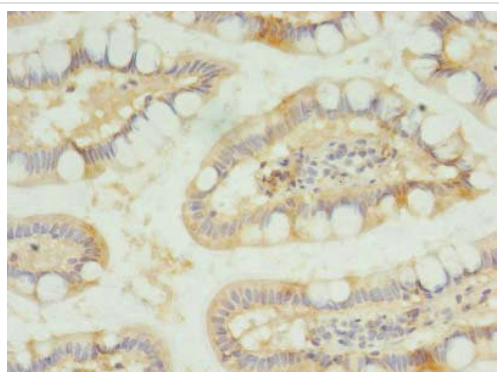
**Lane 1** : A549 (Human lung carcinoma cell line) whole cell lysate

**Lane 2** : Mouse liver tissue lysate

**Lane 3** : Mouse kidney tissue lysate

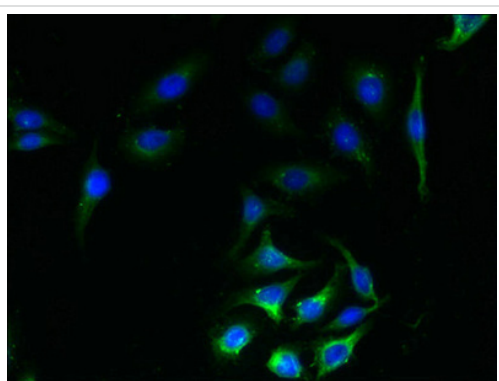
### Secondary

**All lanes** : Goat polyclonal to Rabbit IgG at 1/10000 dilution



Immunohistochemistry (Formalin/PFA-fixed paraffin-embedded sections) - Anti-SVCT1 antibody (ab236878)

Paraffin-embedded human small intestine tissue stained for SVCT1 with ab236878 at a 1/100 dilution in immunohistochemical analysis.



Immunocytochemistry/ Immunofluorescence - Anti-SVCT1 antibody (ab236878)

A549 (Human lung carcinoma cell line) cells stained for SVCT1 (Green) using ab236878 at a 1/100 dilution in ICC/IF. Secondary used is an Alexa-Fluor<sup>®</sup>488-conjugated Goat Anti-Rabbit IgG (H+L).

**Please note:** All products are "FOR RESEARCH USE ONLY. NOT FOR USE IN DIAGNOSTIC PROCEDURES"

### Our Abpromise to you: Quality guaranteed and expert technical support

---

- Replacement or refund for products not performing as stated on the datasheet
- Valid for 12 months from date of delivery
- Response to your inquiry within 24 hours
- We provide support in Chinese, English, French, German, Japanese and Spanish
- Extensive multi-media technical resources to help you

- We investigate all quality concerns to ensure our products perform to the highest standards

If the product does not perform as described on this datasheet, we will offer a refund or replacement. For full details of the Abpromise, please visit <https://www.abcam.com/abpromise> or contact our technical team.

### **Terms and conditions**

---

- Guarantee only valid for products bought direct from Abcam or one of our authorized distributors