




Product datasheet

Anti-SYBL1/VAMP-7 antibody ab224535

2 Images

Overview

<b>Product name</b>	Anti-SYBL1/VAMP-7 antibody
<b>Description</b>	Rabbit polyclonal to SYBL1/VAMP-7
<b>Host species</b>	Rabbit
<b>Tested applications</b>	<b>Suitable for:</b> IHC-P, ICC/IF
<b>Species reactivity</b>	<b>Reacts with:</b> Human <b>Predicted to work with:</b> Mouse, Rat, Chicken, Cow, Orangutan 
<b>Immunogen</b>	Recombinant fragment corresponding to Human SYBL1/VAMP-7 aa 100-187. Sequence: YAMNSEFSSVLAAQLKHHSENKGLDKVMETQAQVDELK GIMVRNIDLVAQ RGERLELLIDKTENLVDSSVTFKTTSRNLARAMCMKNL  Database link: <a href="#">P51809</a>   <a href="#">Run BLAST with</a>  <a href="#">Run BLAST with</a>
<b>Positive control</b>	IHC-P: Human pancreas tissue. ICC/IF: U-251 MG cells.
<b>General notes</b>	Previously labelled as SYBL1.  Reproducibility is key to advancing scientific discovery and accelerating scientists' next breakthrough.  Abcam is leading the way with our range of recombinant antibodies, knockout-validated antibodies and knockout cell lines, all of which support improved reproducibility.  We are also planning to innovate the way in which we present recommended applications and species on our product datasheets, so that only applications & species that have been tested in our own labs, our suppliers or by selected trusted collaborators are covered by our Abpromise™ guarantee.  In preparation for this, we have started to update the applications & species that this product is Abpromise guaranteed for.  We are also updating the applications & species that this product has been “predicted to work with,” however this information is not covered by our Abpromise guarantee.  Applications & species from publications and Abreviews that have not been tested in our own labs or in those of our suppliers are not covered by the Abpromise guarantee.  Please check that this product meets your needs before purchasing. If you have any questions,

special requirements or concerns, please send us an inquiry and/or contact our Support team ahead of purchase. Recommended alternatives for this product can be found below, as well as customer reviews and Q&As.

## Properties

---

<b>Form</b>	Liquid
<b>Storage instructions</b>	Shipped at 4°C. Store at +4°C short term (1-2 weeks). Upon delivery aliquot. Store at -20°C long term. Avoid freeze / thaw cycle.
<b>Storage buffer</b>	pH: 7.20 Preservative: 0.02% Sodium azide Constituents: 40% Glycerol (glycerin, glycerine), PBS
<b>Purity</b>	Immunogen affinity purified
<b>Clonality</b>	Polyclonal
<b>Isotype</b>	IgG

## Applications

---

Our [Abpromise guarantee](#) covers the use of **ab224535** in the following tested applications.

The application notes include recommended starting dilutions; optimal dilutions/concentrations should be determined by the end user.

Application	Abreviews	Notes
IHC-P		1/50 - 1/200. Perform heat mediated antigen retrieval with citrate buffer pH 6 before commencing with IHC staining protocol.
ICC/IF		Use a concentration of 0.25 - 2 µg/ml. Fixation/Permeabilization: PFA/Triton X-100.

---

## Target

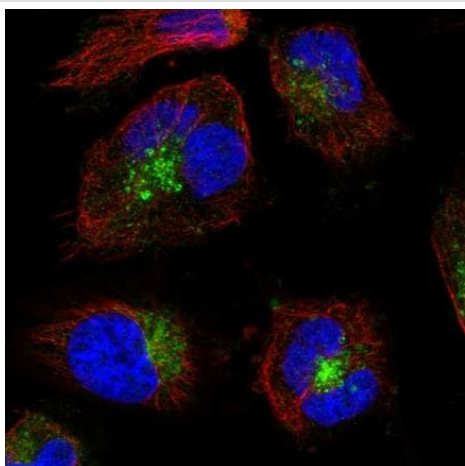
---

<b>Function</b>	Involved in the targeting and/or fusion of transport vesicles to their target membrane during transport of proteins from the early endosome to the lysosome. Required for heterotypic fusion of late endosomes with lysosomes and homotypic lysosomal fusion. Required for calcium regulated lysosomal exocytosis. Involved in the export of chylomicrons from the endoplasmic reticulum to the cis Golgi. Required for exocytosis of mediators during eosinophil and neutrophil degranulation, and target cell killing by natural killer cells. Required for focal exocytosis of late endocytic vesicles during phagosome formation.
<b>Tissue specificity</b>	Detected in all tissues tested.
<b>Sequence similarities</b>	Belongs to the synaptobrevin family. Contains 1 longin domain. Contains 1 v-SNARE coiled-coil homology domain.
<b>Cellular localization</b>	Cytoplasmic vesicle > secretory vesicle membrane. Golgi apparatus > trans-Golgi network membrane. Late endosome membrane. Lysosome membrane. Endoplasmic reticulum membrane. Cytoplasmic vesicle > phagosome membrane.

---

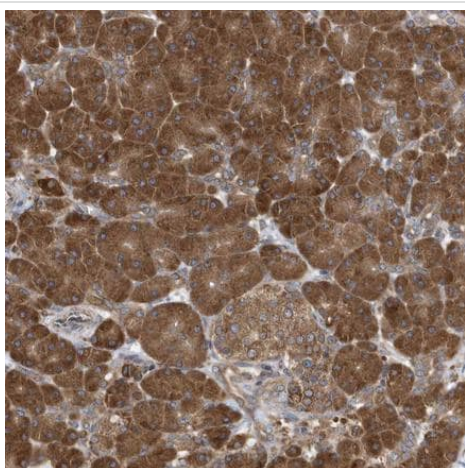
## Images

---



PFA-fixed, Triton X-100 permeabilized U-251 MG (human brain glioma cell line) cells stained for SYBL1/VAMP-7 (green) using ab224535 at 4 µg/ml in ICC/IF.

Immunocytochemistry/ Immunofluorescence - Anti-SYBL1/VAMP-7 antibody (ab224535)



Paraffin-embedded human pancreas tissue stained for SYBL1/VAMP-7 using ab224535 at 1/50 dilution in immunohistochemical analysis.

Immunohistochemistry (Formalin/PFA-fixed paraffin-embedded sections) - Anti-SYBL1/VAMP-7 antibody (ab224535)

**Please note:** All products are "FOR RESEARCH USE ONLY. NOT FOR USE IN DIAGNOSTIC PROCEDURES"

### Our Abpromise to you: Quality guaranteed and expert technical support

---

- Replacement or refund for products not performing as stated on the datasheet
- Valid for 12 months from date of delivery
- Response to your inquiry within 24 hours
- We provide support in Chinese, English, French, German, Japanese and Spanish
- Extensive multi-media technical resources to help you

- We investigate all quality concerns to ensure our products perform to the highest standards

If the product does not perform as described on this datasheet, we will offer a refund or replacement. For full details of the Abpromise, please visit <https://www.abcam.com/abpromise> or contact our technical team.

### **Terms and conditions**

---

- Guarantee only valid for products bought direct from Abcam or one of our authorized distributors