

Product datasheet

Anti-Syntaxin 2/STX2 antibody ab12369

6 References 2 Images

Overview

<b>Product name</b>	Anti-Syntaxin 2/STX2 antibody
<b>Description</b>	Rabbit polyclonal to Syntaxin 2/STX2
<b>Host species</b>	Rabbit
<b>Tested applications</b>	<b>Suitable for:</b> ICC/IF, WB
<b>Species reactivity</b>	<b>Reacts with:</b> Human
<b>Immunogen</b>	Synthetic peptide corresponding to Rat Syntaxin 2/STX2 aa 1-100 conjugated to keyhole limpet haemocyanin. Database link: <a href="#">P50279</a>

 [Run BLAST with](#)

 [Run BLAST with](#)

General notes

The Life Science industry has been in the grips of a reproducibility crisis for a number of years. Abcam is leading the way in addressing this with our range of recombinant monoclonal antibodies and knockout edited cell lines for gold-standard validation. Please check that this product meets your needs before purchasing.

If you have any questions, special requirements or concerns, please send us an inquiry and/or contact our Support team ahead of purchase. Recommended alternatives for this product can be found below, along with publications, customer reviews and Q&As

Properties

<b>Form</b>	Liquid
<b>Storage instructions</b>	Shipped at 4°C. Store at +4°C short term (1-2 weeks). Upon delivery aliquot. Store at -20°C or -80°C. Avoid freeze / thaw cycle.
<b>Storage buffer</b>	Preservative: 0.09% Sodium azide Constituents: PBS, 50% Glycerol (glycerin, glycerine)
<b>Purity</b>	Immunogen affinity purified
<b>Purification notes</b>	This antibody was purified on a peptide bound immunoaffinity column.
<b>Clonality</b>	Polyclonal
<b>Isotype</b>	IgG

Applications

## The Abpromise guarantee

Our [Abpromise guarantee](#) covers the use of ab12369 in the following tested applications.

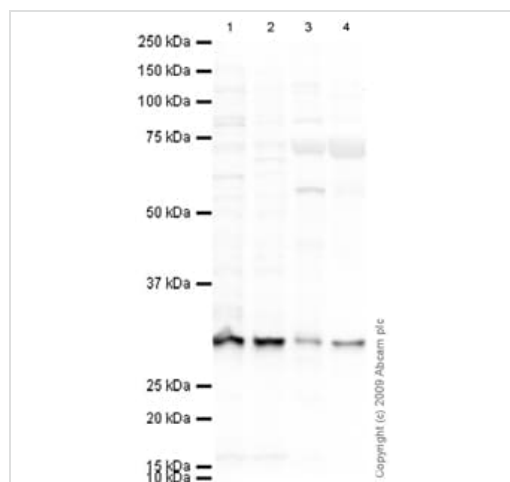
The application notes include recommended starting dilutions; optimal dilutions/concentrations should be determined by the end user.

Application	Abreviews	Notes
ICC/IF		Use a concentration of 5 µg/ml.
WB		Use a concentration of 4 µg/ml. Detects a band of approximately 35 kDa (predicted molecular weight: 33.3 kDa). human and 1/1000-1/2000 for other species.

## Target

<b>Function</b>	Essential for epithelial morphogenesis. May mediate Ca(2+)-regulation of exocytosis acrosomal reaction in sperm.
<b>Sequence similarities</b>	Belongs to the syntaxin family. Contains 1 t-SNARE coiled-coil homology domain.
<b>Cellular localization</b>	Membrane.
<b>Form</b>	Inhibition of syntaxin-2 and Vamp8 function by overexpression of nonmembrane-anchored mutants caused failure of cytokinesis leading to the formation of binucleated cells. There are 3 isoforms produced by alternative splicing.

## Images



Western blot - Anti-Syntaxin 2/STX2 antibody (ab12369)

**All lanes :** Anti-Syntaxin 2/STX2 antibody (ab12369) at 1 µg/ml

**Lane 1 :** HeLa (Human epithelial carcinoma cell line) Whole Cell Lysate

**Lane 2 :** A431 (Human epithelial carcinoma cell line) Whole Cell Lysate

**Lane 3 :** Human kidney tissue lysate - total protein ([ab30203](#))

**Lane 4 :** Human skin tissue lysate - total protein ([ab30166](#))

Lysates/proteins at 10 µg per lane.

### Secondary

**All lanes :** Goat polyclonal to Rabbit IgG - H&L - Pre-Adsorbed (HRP) at 1/3000 dilution

Developed using the ECL technique.

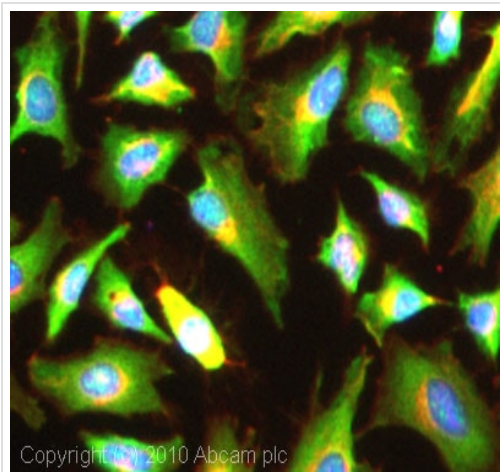
Performed under reducing conditions.

**Predicted band size:** 33.3 kDa

**Observed band size:** 33.3 kDa

**Additional bands at:** 74 kDa. We are unsure as to the identity of these extra bands.

**Exposure time:** 4 minutes



Immunocytochemistry/ Immunofluorescence - Anti-Syntaxin 2/STX2 antibody (ab12369)

ICC/IF image of ab12369 stained HeLa cells. The cells were 100% methanol fixed (5 min) and then incubated in 1%BSA / 10% normal goat serum / 0.3M glycine in 0.1% PBS-Tween for 1h to permeabilise the cells and block non-specific protein-protein interactions. The cells were then incubated with the antibody (ab12369, 5µg/ml) overnight at +4°C. The secondary antibody (green) was Alexa Fluor® 488 goat anti-rabbit IgG (H+L) used at a 1/1000 dilution for 1h. Alexa Fluor® 594 WGA was used to label plasma membranes (red) at a 1/200 dilution for 1h. DAPI was used to stain the cell nuclei (blue) at a concentration of 1.43µM.

**Please note:** All products are "FOR RESEARCH USE ONLY. NOT FOR USE IN DIAGNOSTIC PROCEDURES"

### Our Abpromise to you: Quality guaranteed and expert technical support

---

- Replacement or refund for products not performing as stated on the datasheet
- Valid for 12 months from date of delivery
- Response to your inquiry within 24 hours
- We provide support in Chinese, English, French, German, Japanese and Spanish
- Extensive multi-media technical resources to help you
- We investigate all quality concerns to ensure our products perform to the highest standards

If the product does not perform as described on this datasheet, we will offer a refund or replacement. For full details of the Abpromise, please visit <https://www.abcam.com/abpromise> or contact our technical team.

### Terms and conditions

---

- Guarantee only valid for products bought direct from Abcam or one of our authorized distributors