




Product datasheet

# Anti-Syntaxin 8 antibody ab238641

1 Image

Overview

---

<b>Product name</b>	Anti-Syntaxin 8 antibody
<b>Description</b>	Rabbit polyclonal to Syntaxin 8
<b>Host species</b>	Rabbit
<b>Tested applications</b>	<b>Suitable for:</b> IHC-P
<b>Species reactivity</b>	<b>Reacts with:</b> Human <b>Predicted to work with:</b> Mouse, Rat, Cow 
<b>Immunogen</b>	Recombinant fragment corresponding to Human Syntaxin 8 aa 1-215. Sequence: MAPDPWFSTYDSTCQIAQEIAEKIQQRNQYERKGEKAP KLTVTIRALLQN LKEKIALLDLLLRAVSTHQITQLEGDRRQNLDDLVTR ERLLASFKNE GAEPDLIRSSLMSEEAKRGAPNPWLFEEPEETRGLGF DEIRQQQKIIQE QDAGLDALSSIISRQKQMGQEIGNELDEQNEIDDLANL VENTDEKL RNE TRRVNMVDRKSASCG  Database link: <a href="#">Q9UNK0</a>   <a href="#">Run BLAST with</a>  <a href="#">Run BLAST with</a>
<b>Positive control</b>	IHC-P: Human liver cancer tissue.

Properties

---

<b>Form</b>	Liquid
<b>Storage instructions</b>	Shipped at 4°C. Store at +4°C short term (1-2 weeks). Upon delivery aliquot. Store at -20°C long term. Avoid freeze / thaw cycle.
<b>Storage buffer</b>	pH: 7.4 Preservative: 0.03% Proclin Constituents: 50% Glycerol, PBS
<b>Purity</b>	Protein G purified
<b>Purification notes</b>	Purity >95%

<b>Clonality</b>	Polyclonal
<b>Isotype</b>	IgG

## Applications

Our [Abpromise guarantee](#) covers the use of **ab238641** in the following tested applications.

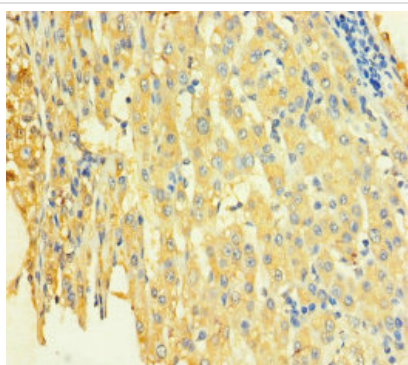
The application notes include recommended starting dilutions; optimal dilutions/concentrations should be determined by the end user.

Application	Abreviews	Notes
IHC-P		1/20 - 1/200.

## Target

<b>Function</b>	Vesicle trafficking protein that functions in the early secretory pathway, possibly by mediating retrograde transport from cis-Golgi membranes to the ER.
<b>Tissue specificity</b>	Highly expressed in heart. Also found in brain, kidney, liver, lung, placenta, skeletal muscle, spleen and pancreas.
<b>Sequence similarities</b>	Belongs to the syntaxin family. Contains 1 t-SNARE coiled-coil homology domain.
<b>Post-translational modifications</b>	Ubiquitinated by HECTD3.
<b>Cellular localization</b>	Membrane. Preferentially associated with the early endosome. To lesser extends, also present in late endosome, the plasma membrane and coated pits.

## Images



Paraffin-embedded human liver cancer tissue stained for Syntaxin 8 using ab238641 at 1/100 dilution in immunohistochemical analysis.

Immunohistochemistry (Formalin/PFA-fixed paraffin-embedded sections) - Anti-Syntaxin 8 antibody (ab238641)

**Please note:** All products are "FOR RESEARCH USE ONLY. NOT FOR USE IN DIAGNOSTIC PROCEDURES"

## **Our Abpromise to you: Quality guaranteed and expert technical support**

---

- Replacement or refund for products not performing as stated on the datasheet
- Valid for 12 months from date of delivery
- Response to your inquiry within 24 hours
  
- We provide support in Chinese, English, French, German, Japanese and Spanish
- Extensive multi-media technical resources to help you
- We investigate all quality concerns to ensure our products perform to the highest standards

If the product does not perform as described on this datasheet, we will offer a refund or replacement. For full details of the Abpromise, please visit <https://www.abcam.com/abpromise> or contact our technical team.

## **Terms and conditions**

---

- Guarantee only valid for products bought direct from Abcam or one of our authorized distributors