


Product datasheet

Anti-SYT13 antibody ab110520

1 Image

Overview

Product name	Anti-SYT13 antibody
Description	Rabbit polyclonal to SYT13
Host species	Rabbit
Tested applications	Suitable for: WB
Species reactivity	Reacts with: Human Predicted to work with: Mouse, Rat 
Immunogen	Synthetic peptide derived from an internal region of Human SYT13.
Positive control	HuvEc cell extract.

Properties

Form	Liquid
Storage instructions	Shipped at 4°C. Store at -20°C. Stable for 12 months at -20°C.
Storage buffer	pH: 7.40 Preservative: 0.02% Sodium azide Constituents: PBS, 0.88% Sodium chloride, 50% Glycerol Note: without Mg ²⁺ and Ca ²⁺
Purity	Immunogen affinity purified
Purification notes	ab110520 was affinity-purified from rabbit antiserum by affinity-chromatography using epitope-specific immunogen.
Clonality	Polyclonal
Isotype	IgG

Applications

Our [Abpromise guarantee](#) covers the use of **ab110520** in the following tested applications.

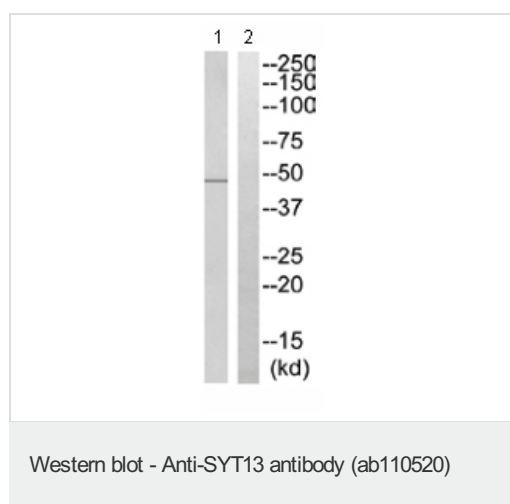
The application notes include recommended starting dilutions; optimal dilutions/concentrations should be determined by the end user.

Application	Abreviews	Notes
WB		1/500 - 1/1000. Predicted molecular weight: 47 kDa.

Target

Function	May be involved in transport vesicle docking to the plasma membrane.
Tissue specificity	Expressed in brain, pancreas and kidney.
Sequence similarities	Belongs to the synaptotagmin family. Contains 2 C2 domains.
Domain	The first C2 domain/C2A does not mediate Ca ²⁺ -dependent phospholipid binding. The second C2 domain/C2B domain binds phospholipids regardless of whether calcium is present.
Cellular localization	Membrane.

Images



All lanes : Anti-SYT13 antibody (ab110520) at 1/500 dilution

Lane 1 : HuvEc cell extract

Lane 2 : HuvEc cell extract with immunizing peptide at 10 µg

Lysates/proteins at 30 µg per lane.

Predicted band size: 47 kDa

Please note: All products are "FOR RESEARCH USE ONLY. NOT FOR USE IN DIAGNOSTIC PROCEDURES"

Our Abpromise to you: Quality guaranteed and expert technical support

- Replacement or refund for products not performing as stated on the datasheet
- Valid for 12 months from date of delivery
- Response to your inquiry within 24 hours
- We provide support in Chinese, English, French, German, Japanese and Spanish
- Extensive multi-media technical resources to help you
- We investigate all quality concerns to ensure our products perform to the highest standards

If the product does not perform as described on this datasheet, we will offer a refund or replacement. For full details of the Abpromise, please visit <https://www.abcam.com/abpromise> or contact our technical team.

Terms and conditions

- Guarantee only valid for products bought direct from Abcam or one of our authorized distributors