



Product datasheet

Anti-SYTL5 antibody ab203218

[2 Images](#)

Overview

Product name	Anti-SYTL5 antibody
Description	Rabbit polyclonal to SYTL5
Host species	Rabbit
Tested applications	Suitable for: WB, IHC-P
Species reactivity	Reacts with: Mouse, Rat, Human
Immunogen	<p>Synthetic peptide within Human SYTL5 aa 600-650 conjugated to Keyhole Limpet Haemocyanin (KLH). The exact sequence is proprietary.</p> <p>Sequence:</p> <p>TAVKSGGTSDFSFKGYLLPDDSKATKHKTLVIKKSVP QWNHTFMFSGIHP</p> <p>Database link: Q8TDW5</p> <p style="text-align: right;">  Run BLAST with  Run BLAST with </p>
Positive control	Rat brain tissue

Properties

Form	Liquid
Storage instructions	Shipped at 4°C. Store at +4°C short term (1-2 weeks). Upon delivery aliquot. Store at -20°C long term. Avoid freeze / thaw cycle.
Storage buffer	Aqueous buffered solution containing 100ug/ml BSA, 50% glycerol and 0.09% sodium azide.
Purity	Protein A purified
Clonality	Polyclonal
Isotype	IgG

Applications

Our [Abpromise guarantee](#) covers the use of **ab203218** in the following tested applications.

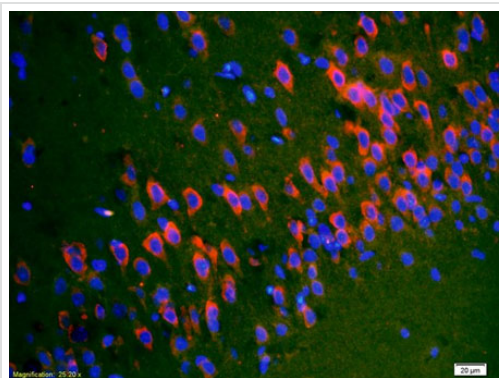
The application notes include recommended starting dilutions; optimal dilutions/concentrations should be determined by the end user.

Application	Abreviews	Notes
WB		1/100 - 1/1000. Predicted molecular weight: 82 kDa.
IHC-P		1/100 - 1/500. When using a fluorescent probe the recommended dilution is 1/50 – 1/200

Target

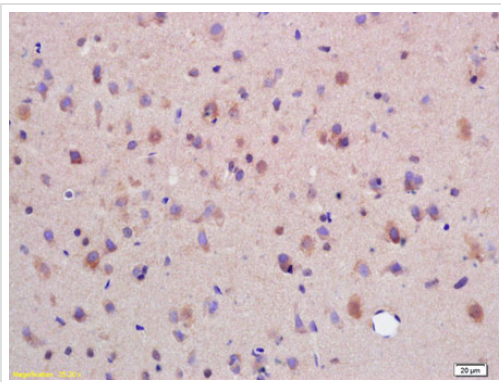
Function	May act as Rab effector protein and play a role in vesicle trafficking. Binds phospholipids.
Tissue specificity	Highly expressed in placenta and liver.
Sequence similarities	Contains 2 C2 domains. Contains 1 FYVE-type zinc finger. Contains 1 RabBD (Rab-binding) domain.
Cellular localization	Membrane.

Images



Immunohistochemical analysis of formalin-fixed, paraffin-embedded rat brain tissue, labeling SYTL5 (red) with ab203218 at 1/200 dilution. Cy3-conjugated goat anti-rabbit IgG was used as a secondary antibody at 1/200 dilution for 40 minutes at 37°C.

Immunohistochemistry (Formalin/PFA-fixed paraffin-embedded sections) - Anti-SYTL5 antibody (ab203218)



Immunohistochemical analysis of formalin-fixed, paraffin-embedded rat brain tissue, labeling SYTL5 with ab203218 at 1/200 dilution followed by conjugation to the secondary antibody and DAB staining.

Immunohistochemistry (Formalin/PFA-fixed paraffin-embedded sections) - Anti-SYTL5 antibody (ab203218)

Please note: All products are "FOR RESEARCH USE ONLY. NOT FOR USE IN DIAGNOSTIC PROCEDURES"

Our Abpromise to you: Quality guaranteed and expert technical support

- Replacement or refund for products not performing as stated on the datasheet
- Valid for 12 months from date of delivery
- Response to your inquiry within 24 hours
- We provide support in Chinese, English, French, German, Japanese and Spanish
- Extensive multi-media technical resources to help you
- We investigate all quality concerns to ensure our products perform to the highest standards

If the product does not perform as described on this datasheet, we will offer a refund or replacement. For full details of the Abpromise, please visit <https://www.abcam.com/abpromise> or contact our technical team.

Terms and conditions

- Guarantee only valid for products bought direct from Abcam or one of our authorized distributors