

Product datasheet

Anti-TAF1C antibody ab210750

2 Images

Overview

Product name	Anti-TAF1C antibody
Description	Rabbit polyclonal to TAF1C
Host species	Rabbit
Tested applications	Suitable for: IHC-P, WB
Species reactivity	Reacts with: Mouse, Human
Immunogen	Recombinant fragment corresponding to Human TAF1C aa 72-320 (internal sequence). Database link: Q15572
Positive control	WB: Extracts from 293T, MCF7 and mouse thymus. IHC-P: Mouse lung tissue.

Properties

Form	Liquid
Storage instructions	Shipped at 4°C. Store at +4°C short term (1-2 weeks). Upon delivery aliquot. Store at -20°C. Avoid freeze / thaw cycle.
Storage buffer	pH: 7.3 Preservative: 0.02% Sodium azide Constituents: 50% Glycerol, PBS
Purity	Immunogen affinity purified
Clonality	Polyclonal
Isotype	IgG

Applications

Our [Abpromise guarantee](#) covers the use of **ab210750** in the following tested applications.

The application notes include recommended starting dilutions; optimal dilutions/concentrations should be determined by the end user.

Application	Abreviews	Notes
IHC-P		1/50 - 1/200.
WB		1/500 - 1/2000. Predicted molecular weight: 95 kDa.

Target

Function

Component of the transcription factor SL1/TIF-IB complex, which is involved in the assembly of the PIC (preinitiation complex) during RNA polymerase I-dependent transcription. The rate of PIC formation probably is primarily dependent on the rate of association of SL1/TIF-IB with the rDNA promoter. SL1/TIF-IB is involved in stabilization of nucleolar transcription factor 1/UBTF on rDNA. Formation of SL1/TIF-IB excludes the association of TBP with TFIID subunits. Recruits RNA polymerase I to the rRNA gene promoter via interaction with RRN3.

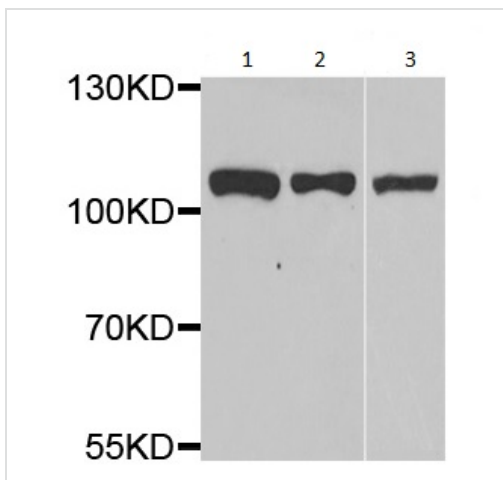
Post-translational modifications

Phosphorylated upon DNA damage, probably by ATM or ATR.

Cellular localization

Nucleus.

Images



Western blot - Anti-TAF1C antibody (ab210750)

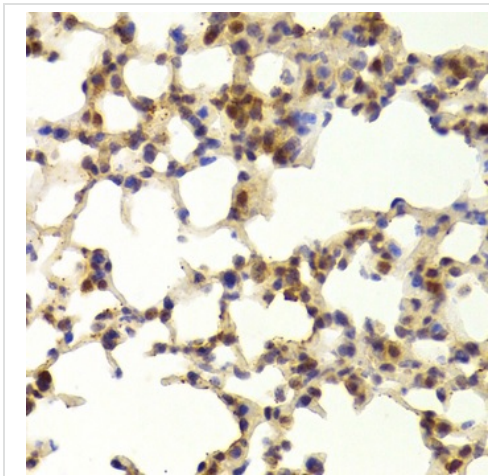
All lanes : Anti-TAF1C antibody (ab210750) at 1/500 dilution

Lane 1 : Extracts from 293T cell line

Lane 2 : Extracts from MCF7 cell line

Lane 3 : Extracts from mouse thymus

Predicted band size: 95 kDa



Immunohistochemistry (Formalin/PFA-fixed paraffin-embedded sections) - Anti-TAF1C antibody (ab210750)

Immunohistochemical analysis of paraffin-embedded mouse lung tissue sections labeling TAF1C with ab210750 at a 1/100 dilution.

Please note: All products are "FOR RESEARCH USE ONLY. NOT FOR USE IN DIAGNOSTIC PROCEDURES"

Our Abpromise to you: Quality guaranteed and expert technical support

- Replacement or refund for products not performing as stated on the datasheet
- Valid for 12 months from date of delivery
- Response to your inquiry within 24 hours

- We provide support in Chinese, English, French, German, Japanese and Spanish
- Extensive multi-media technical resources to help you
- We investigate all quality concerns to ensure our products perform to the highest standards

If the product does not perform as described on this datasheet, we will offer a refund or replacement. For full details of the Abpromise, please visit <https://www.abcam.com/abpromise> or contact our technical team.

Terms and conditions

- Guarantee only valid for products bought direct from Abcam or one of our authorized distributors