

Product datasheet

Anti-TAS2R10 antibody ab138285

1 References 1 Image

Overview

| | |
|----------------------------|---|
| Product name | Anti-TAS2R10 antibody |
| Description | Rabbit polyclonal to TAS2R10 |
| Host species | Rabbit |
| Tested applications | Suitable for: WB |
| Species reactivity | Reacts with: Human |
| Immunogen | Synthetic peptide derived from internal sequence of Human TAS2R10. |
| Positive control | HepG2 cell lysate |
| General notes | <p>The Life Science industry has been in the grips of a reproducibility crisis for a number of years. Abcam is leading the way in addressing this with our range of recombinant monoclonal antibodies and knockout edited cell lines for gold-standard validation. Please check that this product meets your needs before purchasing.</p> <p>If you have any questions, special requirements or concerns, please send us an inquiry and/or contact our Support team ahead of purchase. Recommended alternatives for this product can be found below, along with publications, customer reviews and Q&As</p> |

Properties

| | |
|-----------------------------|--|
| Form | Liquid |
| Storage instructions | Shipped at 4°C. Store at -20°C. |
| Storage buffer | <p>pH: 7.40</p> <p>Preservative: 0.02% Sodium azide</p> <p>Constituents: 50% Glycerol (glycerin, glycerine), 0.88% Sodium chloride, 49% PBS</p> <p>PBS without Mg²⁺ and Ca²⁺</p> |
| Purity | Immunogen affinity purified |
| Clonality | Polyclonal |
| Isotype | IgG |

Applications

The Abpromise guarantee

Our [Abpromise guarantee](#) covers the use of ab138285 in the following tested applications.

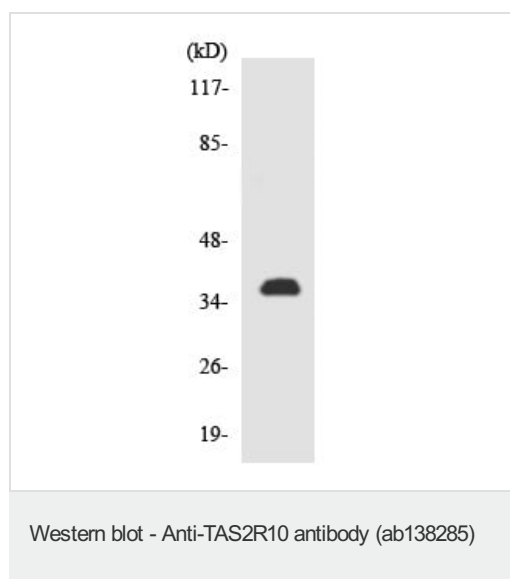
The application notes include recommended starting dilutions; optimal dilutions/concentrations should be determined by the end user.

| Application | Abreviews | Notes |
|-------------|-----------|---|
| WB | | 1/500 - 1/1000. Predicted molecular weight: 35 kDa. |

Target

| | |
|------------------------------|---|
| Function | Gustducin-coupled strychnine receptor implicated in the perception of bitter compounds in the oral cavity and the gastrointestinal tract. Signals through PLCB2 and the calcium-regulated cation channel TRPM5. |
| Tissue specificity | Expressed in subsets of taste receptor cells of the tongue and palate epithelium and exclusively in gustducin-positive cells. |
| Sequence similarities | Belongs to the G-protein coupled receptor T2R family. |
| Cellular localization | Membrane. |

Images



Anti-TAS2R10 antibody (ab138285) at 1/500 dilution + HepG2 cell lysate at 30 µg

Predicted band size: 35 kDa

Please note: All products are "FOR RESEARCH USE ONLY. NOT FOR USE IN DIAGNOSTIC PROCEDURES"

Our Abpromise to you: Quality guaranteed and expert technical support

- Replacement or refund for products not performing as stated on the datasheet
- Valid for 12 months from date of delivery
- Response to your inquiry within 24 hours
- We provide support in Chinese, English, French, German, Japanese and Spanish
- Extensive multi-media technical resources to help you

- We investigate all quality concerns to ensure our products perform to the highest standards

If the product does not perform as described on this datasheet, we will offer a refund or replacement. For full details of the Abpromise, please visit <https://www.abcam.com/abpromise> or contact our technical team.

Terms and conditions

- Guarantee only valid for products bought direct from Abcam or one of our authorized distributors