


Product datasheet

Anti-Tat-SF1 antibody ab87317

1 Image

Overview

<b>Product name</b>	Anti-Tat-SF1 antibody
<b>Description</b>	Rabbit polyclonal to Tat-SF1
<b>Host species</b>	Rabbit
<b>Tested applications</b>	<b>Suitable for:</b> IHC-P
<b>Species reactivity</b>	<p><b>Reacts with:</b> Human</p> <p><b>Predicted to work with:</b> Chimpanzee, Rhesus monkey, Gorilla, Orangutan </p>
<b>Immunogen</b>	<p>Synthetic peptide corresponding to Human Tat-SF1 aa 375-425.</p> <p>Database link: <a href="#">NP_055315.2</a></p>
<b>Positive control</b>	Human Anaplastic Thyroid Carcinoma, Breast Carcinoma, Colon Carcinoma, Ovarian Carcinoma, Pancreatic Islet Cell Tumor and Prostate Carcinoma.
<b>General notes</b>	<p>Previously labelled as HIV TAT specific factor 1.</p> <p>Reproducibility is key to advancing scientific discovery and accelerating scientists' next breakthrough.</p> <p>Abcam is leading the way with our range of recombinant antibodies, knockout-validated antibodies and knockout cell lines, all of which support improved reproducibility.</p> <p>We are also planning to innovate the way in which we present recommended applications and species on our product datasheets, so that only applications &amp; species that have been tested in our own labs, our suppliers or by selected trusted collaborators are covered by our Abpromise™ guarantee.</p> <p>In preparation for this, we have started to update the applications &amp; species that this product is Abpromise guaranteed for.</p> <p>We are also updating the applications &amp; species that this product has been “predicted to work with,” however this information is not covered by our Abpromise guarantee.</p> <p>Applications &amp; species from publications and Abreviews that have not been tested in our own labs or in those of our suppliers are not covered by the Abpromise guarantee.</p> <p>Please check that this product meets your needs before purchasing. If you have any questions, special requirements or concerns, please send us an inquiry and/or contact our Support team ahead of purchase. Recommended alternatives for this product can be found below, as well as customer reviews and Q&amp;As.</p>

## Properties

---

<b>Form</b>	Liquid
<b>Storage instructions</b>	Shipped at 4°C. Upon delivery aliquot and store at -20°C. Avoid freeze / thaw cycles.
<b>Storage buffer</b>	pH: 6.8 Preservative: 0.09% Sodium azide Constituents: 0.1% BSA, Tris buffered saline
<b>Purity</b>	Immunogen affinity purified
<b>Clonality</b>	Polyclonal
<b>Isotype</b>	IgG

## Applications

---

Our [Abpromise guarantee](#) covers the use of **ab87317** in the following tested applications.

The application notes include recommended starting dilutions; optimal dilutions/concentrations should be determined by the end user.

Application	Abreviews	Notes
IHC-P		

<b>Application notes</b>	IHC-P: 1/100 - 1/500. Epitope exposure is recommended. Epitope exposure with Tris-EDTA pH9.0 buffer will enhance staining.  Not yet tested in other applications. Optimal dilutions/concentrations should be determined by the end user.
--------------------------	---

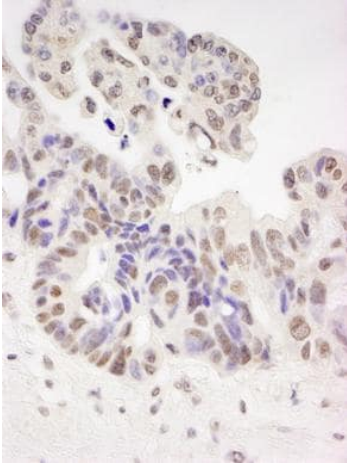
## Target

---

<b>Relevance</b>	HIV TAT specific factor(a.k.a. HTATSF1, Tat-SF1 or HTSF1) is an 86 kDa general transcription factor that plays a role in the process of transcription elongation. However, in HIV-infected cells, this factor is up-regulated by HIV Nef and gp120 and acts as a co-factor for the Tat-enhanced transcription of the HIV virus.
<b>Cellular localization</b>	Nuclear

## Images

---



Immunohistochemistry (Formalin/PFA-fixed paraffin-embedded sections) - Anti-Tat-SF1 antibody (ab87317)

ab87317, at 1/250 dilution, staining Tat-SF1 in formalin-fixed, paraffin-embedded human ovarian carcinoma by immunohistochemistry using DAB staining.

**Please note:** All products are "FOR RESEARCH USE ONLY. NOT FOR USE IN DIAGNOSTIC PROCEDURES"

### Our Abpromise to you: Quality guaranteed and expert technical support

---

- Replacement or refund for products not performing as stated on the datasheet
- Valid for 12 months from date of delivery
- Response to your inquiry within 24 hours
  
- We provide support in Chinese, English, French, German, Japanese and Spanish
- Extensive multi-media technical resources to help you
- We investigate all quality concerns to ensure our products perform to the highest standards

If the product does not perform as described on this datasheet, we will offer a refund or replacement. For full details of the Abpromise, please visit <https://www.abcam.com/abpromise> or contact our technical team.

### Terms and conditions

---

- Guarantee only valid for products bought direct from Abcam or one of our authorized distributors