


Product datasheet

Anti-TBC1D1 antibody ab229504

1 Image

Overview

<b>Product name</b>	Anti-TBC1D1 antibody
<b>Description</b>	Rabbit polyclonal to TBC1D1
<b>Host species</b>	Rabbit
<b>Tested applications</b>	<b>Suitable for:</b> WB
<b>Species reactivity</b>	<b>Reacts with:</b> Human <b>Predicted to work with:</b> Mouse, Rhesus monkey 
<b>Immunogen</b>	Recombinant fragment within Human TBC1D1 (internal sequence). The exact sequence is proprietary. Database link: <a href="#">Q86T10</a>
<b>Positive control</b>	WB: HEK-293T, HeLa and HepG2 whole cell extracts.

Properties

<b>Form</b>	Liquid
<b>Storage instructions</b>	Shipped at 4°C. Store at +4°C short term (1-2 weeks). Upon delivery aliquot. Store at -20°C long term. Avoid freeze / thaw cycle.
<b>Storage buffer</b>	pH: 7.00 Preservative: 0.025% Proclin Constituents: PBS, 20% Glycerol
<b>Purity</b>	Immunogen affinity purified
<b>Clonality</b>	Polyclonal
<b>Isotype</b>	IgG

Applications

Our [Abpromise guarantee](#) covers the use of **ab229504** in the following tested applications.

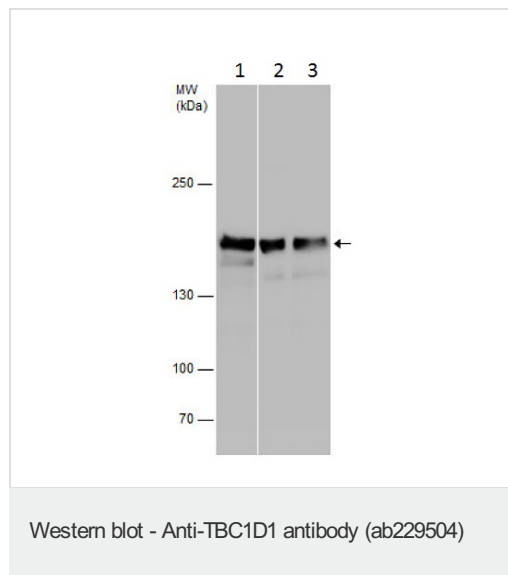
The application notes include recommended starting dilutions; optimal dilutions/concentrations should be determined by the end user.

Application	Abreviews	Notes
WB		1/500 - 1/3000. Predicted molecular weight: 133 kDa.

## Target

<b>Function</b>	May act as a GTPase-activating protein for Rab family protein(s). May play a role in the cell cycle and differentiation of various tissues.
<b>Sequence similarities</b>	Contains 1 PID domain. Contains 1 Rab-GAP TBC domain.
<b>Cellular localization</b>	Nucleus.

## Images



**All lanes :** Anti-TBC1D1 antibody (ab229504) at 1/1000 dilution

**Lane 1 :** HEK-293T (Human epithelial cell line from embryonic kidney transformed with large T antigen) whole cell extracts

**Lane 2 :** HeLa (Human epithelial cell line from cervix adenocarcinoma) whole cell extracts

**Lane 3 :** HepG2 (Human liver hepatocellular carcinoma cell line) whole cell extracts

Lysates/proteins at 30 µg per lane.

Developed using the ECL technique.

**Predicted band size:** 133 kDa

5% SDS-PAGE

**Please note:** All products are "FOR RESEARCH USE ONLY. NOT FOR USE IN DIAGNOSTIC PROCEDURES"

## Our Abpromise to you: Quality guaranteed and expert technical support

- Replacement or refund for products not performing as stated on the datasheet
- Valid for 12 months from date of delivery
- Response to your inquiry within 24 hours
- We provide support in Chinese, English, French, German, Japanese and Spanish
- Extensive multi-media technical resources to help you
- We investigate all quality concerns to ensure our products perform to the highest standards

If the product does not perform as described on this datasheet, we will offer a refund or replacement. For full details of the Abpromise, please visit <https://www.abcam.com/abpromise> or contact our technical team.

## Terms and conditions

---

- Guarantee only valid for products bought direct from Abcam or one of our authorized distributors