


Product datasheet

Anti-TCF12 antibody ab70746

3 Images

Overview

<b>Product name</b>	Anti-TCF12 antibody
<b>Description</b>	Rabbit polyclonal to TCF12
<b>Host species</b>	Rabbit
<b>Tested applications</b>	<b>Suitable for:</b> IP, IHC-P, WB
<b>Species reactivity</b>	<b>Reacts with:</b> Human <b>Predicted to work with:</b> Mouse, Rat, Cow, Chimpanzee, Lizard, Rhesus monkey, Gorilla, Chinese hamster, Orangutan, Elephant 
<b>Immunogen</b>	Synthetic peptide corresponding to a region between residue 1 and 50 of human TCF12 (NP_996919.1).
<b>Positive control</b>	Whole cell lysate from HeLa cells.

Properties

<b>Form</b>	Liquid
<b>Storage instructions</b>	Shipped at 4°C. Upon delivery aliquot and store at -20°C. Avoid freeze / thaw cycles.
<b>Storage buffer</b>	Preservative: 0.09% Sodium azide Constituents: 1.815% Tris, 1.764% Sodium citrate, 0.021% PBS
<b>Purity</b>	Immunogen affinity purified
<b>Clonality</b>	Polyclonal
<b>Isotype</b>	IgG

Applications

Our [Abpromise guarantee](#) covers the use of **ab70746** in the following tested applications.

The application notes include recommended starting dilutions; optimal dilutions/concentrations should be determined by the end user.

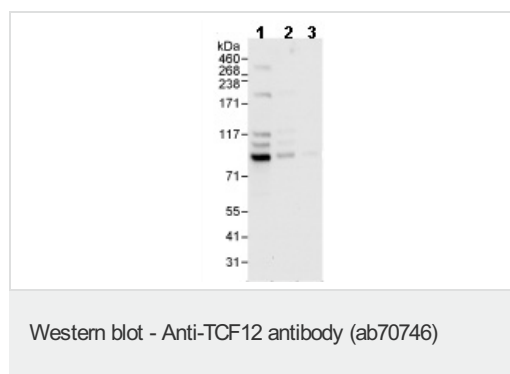
Application	Abreviews	Notes
IP		Use at 2-5 µg/mg of lysate.

Application	Abreviews	Notes
IHC-P		1/500 - 1/2000. Perform heat mediated antigen retrieval with Tris/EDTA buffer pH 9.0 before commencing with IHC staining protocol.
WB		1/2000 - 1/10000. Detects a band of approximately 85 kDa (predicted molecular weight: 73 kDa).

## Target

<b>Function</b>	Binds specifically to oligomers of E-box motifs. May play important roles during development of the nervous system as well as in other organ systems.
<b>Tissue specificity</b>	Expressed in several tissues and cell types including skeletal muscle, thymus, and a B-cell line.
<b>Sequence similarities</b>	Contains 1 basic helix-loop-helix (bHLH) domain.
<b>Domain</b>	the 9aaTAD motif is a transactivation domain present in a large number of yeast and animal transcription factors.
<b>Post-translational modifications</b>	Phosphorylated upon DNA damage, probably by ATM or ATR.
<b>Cellular localization</b>	Nucleus.

## Images



**All lanes :** Anti-TCF12 antibody (ab70746) at 1/10000 dilution

**Lane 1 :** HeLa whole cell lysate at 50 µg

**Lane 2 :** HeLa whole cell lysate at 15 µg

**Lane 3 :** HeLa whole cell lysate at 5 µg

Developed using the ECL technique.

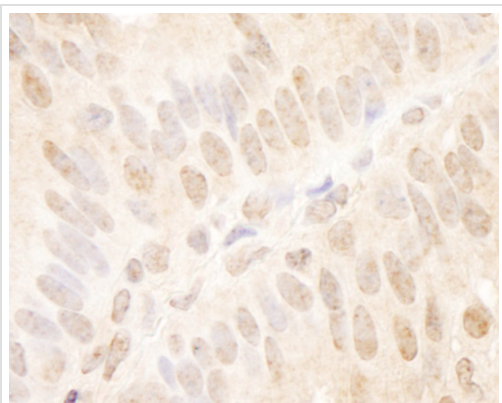
**Predicted band size:** 73 kDa

**Observed band size:** 85 kDa

[why is the actual band size different from the predicted?](#)

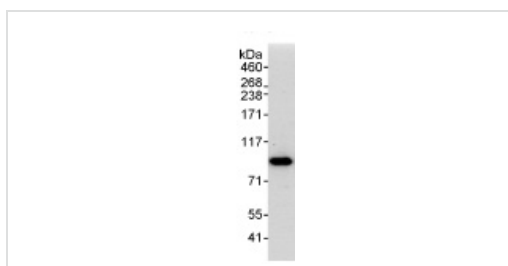
**Additional bands at:** 100 kDa, 120 kDa, 190 kDa. We are unsure as to the identity of these extra bands.

**Exposure time:** 30 seconds



Immunohistochemistry (Formalin/PFA-fixed paraffin-embedded sections) - Anti-TCF12 antibody (ab70746)

Immunohistochemistry (Formalin/PFA-fixed paraffin-embedded sections) analysis of human breast carcinoma tissue labelling TCF12 with ab70746 at 1/1000 (1µg/ml). Detection: DAB.



Immunoprecipitation - Anti-TCF12 antibody (ab70746)

1 mg whole cell lysate from HeLa cells was immunoprecipitated with ab70746 at 3µg/mg lysate. For the subsequent western blot, 20% of the immunoprecipitate was loaded per lane, and probed with [ab707345](#) at 1ug/ml. Detection: chemiluminescence with exposure time of 10 seconds

**Please note:** All products are "FOR RESEARCH USE ONLY. NOT FOR USE IN DIAGNOSTIC PROCEDURES"

### Our Abpromise to you: Quality guaranteed and expert technical support

- Replacement or refund for products not performing as stated on the datasheet
- Valid for 12 months from date of delivery
- Response to your inquiry within 24 hours
- We provide support in Chinese, English, French, German, Japanese and Spanish
- Extensive multi-media technical resources to help you
- We investigate all quality concerns to ensure our products perform to the highest standards

If the product does not perform as described on this datasheet, we will offer a refund or replacement. For full details of the Abpromise, please visit <https://www.abcam.com/abpromise> or contact our technical team.

## Terms and conditions

---

- Guarantee only valid for products bought direct from Abcam or one of our authorized distributors