

Product datasheet

Anti-TCF3 / E2A antibody ab228699

3 Images

Overview

Product name	Anti-TCF3 / E2A antibody
Description	Rabbit polyclonal to TCF3 / E2A
Host species	Rabbit
Tested applications	Suitable for: WB, IP
Species reactivity	Reacts with: Mouse, Human
Immunogen	Recombinant fragment within Human TCF3/ E2A (internal sequence). The exact sequence is proprietary. Database link: P15923
Positive control	WB: Jurkat, BCL-1 and NCI-H929 whole cell lysate. IP: Jurkat whole cell extract.
General notes	<p>Reproducibility is key to advancing scientific discovery and accelerating scientists' next breakthrough.</p> <p>Abcam is leading the way with our range of recombinant antibodies, knockout-validated antibodies and knockout cell lines, all of which support improved reproducibility.</p> <p>We are also planning to innovate the way in which we present recommended applications and species on our product datasheets, so that only applications & species that have been tested in our own labs, our suppliers or by selected trusted collaborators are covered by our Abpromise™ guarantee.</p> <p>In preparation for this, we have started to update the applications & species that this product is Abpromise guaranteed for.</p> <p>We are also updating the applications & species that this product has been "predicted to work with," however this information is not covered by our Abpromise guarantee.</p> <p>Applications & species from publications and Abreviews that have not been tested in our own labs or in those of our suppliers are not covered by the Abpromise guarantee.</p> <p>Please check that this product meets your needs before purchasing. If you have any questions, special requirements or concerns, please send us an inquiry and/or contact our Support team ahead of purchase. Recommended alternatives for this product can be found below, as well as customer reviews and Q&As.</p>

Properties

Form	Liquid
-------------	--------

Storage instructions	Shipped at 4°C. Store at +4°C short term (1-2 weeks). Upon delivery aliquot. Store at -20°C long term. Avoid freeze / thaw cycle.
Storage buffer	pH: 7.00 Preservative: 0.01% Thimerosal (merthiolate) Constituents: 79.99% PBS, 20% Glycerol (glycerin, glycerine)
Purity	Immunogen affinity purified
Clonality	Polyclonal
Isotype	IgG

Applications

Our [Abpromise guarantee](#) covers the use of **ab228699** in the following tested applications.

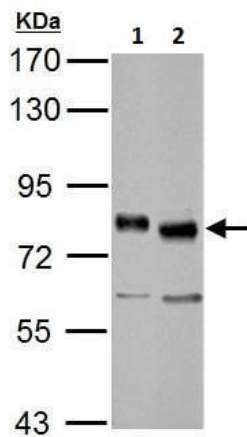
The application notes include recommended starting dilutions; optimal dilutions/concentrations should be determined by the end user.

Application	Abreviews	Notes
WB		1/1000 - 1/10000. Predicted molecular weight: 67 kDa.
IP		1/100 - 1/500.

Target

Function	Heterodimers between TCF3 and tissue-specific basic helix-loop-helix (bHLH) proteins play major roles in determining tissue-specific cell fate during embryogenesis, like muscle or early B-cell differentiation. Dimers bind DNA on E-box motifs: 5'-CANNTG-3'. Binds to the kappa-E2 site in the kappa immunoglobulin gene enhancer.
Involvement in disease	Note=Chromosomal aberrations involving TCF3 are cause of forms of pre-B-cell acute lymphoblastic leukemia (B-ALL). Translocation t(1;19)(q23;p13.3) with PBX1; Translocation t(17;19)(q22;p13.3) with HLF. Inversion inv(19)(p13;q13) with TFPT.
Sequence similarities	Contains 1 basic helix-loop-helix (bHLH) domain.
Domain	the 9aaTAD motif is a transactivation domain present in a large number of yeast and animal transcription factors.
Post-translational modifications	Phosphorylated following NGF stimulation.
Cellular localization	Nucleus.

Images



Western blot - Anti-TCF3 / E2A antibody (ab228699)

All lanes : Anti-TCF3 / E2A antibody (ab228699) at 1/5000 dilution

Lane 1 : Jurkat (human T cell leukemia cell line from peripheral blood) whole cell lysate

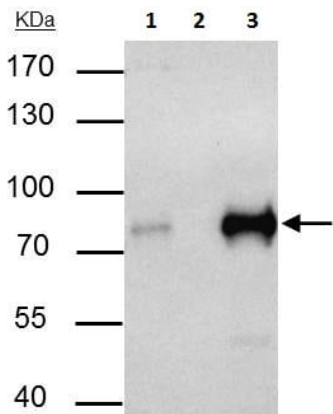
Lane 2 : NCI-H929 (human lymphoblastoid cell line) whole cell lysate

Lysates/proteins at 30 µg per lane.

Developed using the ECL technique.

Predicted band size: 67 kDa

7.5% SDS-PAGE



Immunoprecipitation - Anti-TCF3 / E2A antibody (ab228699)

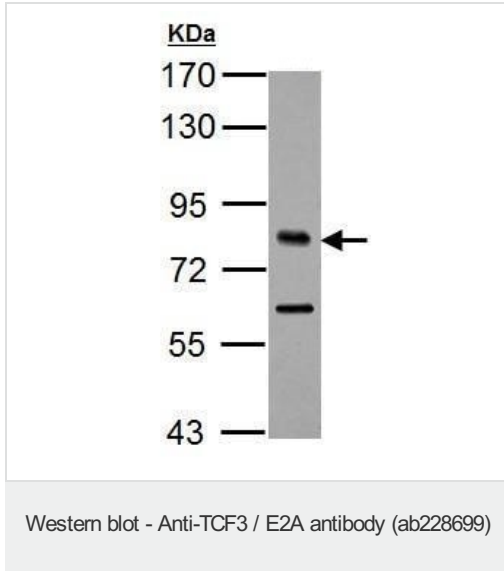
TCF3 / E2A was immunoprecipitated from Jurkat (human T cell leukemia cell line from peripheral blood) whole cell extract with 4 µg ab228699. Western blot was performed from the immunoprecipitate using ab228699 at 1/1000 dilution.

Lane 1: Jurkat whole cell extract 35 µg (Input).

Lane 2: Control IgG IP in Jurkat whole cell extract.

Lane 3: ab228699 IP in Jurkat whole cell extract.

7.5% SDS-PAGE



Anti-TCF3 / E2A antibody (ab228699) at 1/2000 dilution + BCL-1
(mouse lymphoma cell line) whole cell lysate at 30 µg

Developed using the ECL technique.

Predicted band size: 67 kDa

7.5% SDS-PAGE

Please note: All products are "FOR RESEARCH USE ONLY. NOT FOR USE IN DIAGNOSTIC PROCEDURES"

Our Abpromise to you: Quality guaranteed and expert technical support

- Replacement or refund for products not performing as stated on the datasheet
- Valid for 12 months from date of delivery
- Response to your inquiry within 24 hours
- We provide support in Chinese, English, French, German, Japanese and Spanish
- Extensive multi-media technical resources to help you
- We investigate all quality concerns to ensure our products perform to the highest standards

If the product does not perform as described on this datasheet, we will offer a refund or replacement. For full details of the Abpromise, please visit <https://www.abcam.com/abpromise> or contact our technical team.

Terms and conditions

- Guarantee only valid for products bought direct from Abcam or one of our authorized distributors