

Product datasheet

Anti-TCP1 alpha/CCTA antibody [EPR4081] ab92587

Recombinant RabMAb

3 Images

Overview

<b>Product name</b>	Anti-TCP1 alpha/CCTA antibody [EPR4081]
<b>Description</b>	Rabbit monoclonal [EPR4081] to TCP1 alpha/CCTA
<b>Host species</b>	Rabbit
<b>Tested applications</b>	<b>Suitable for:</b> ICC/IF, WB, IHC-P, IP <b>Unsuitable for:</b> Flow Cyt
<b>Species reactivity</b>	<b>Reacts with:</b> Human
<b>Immunogen</b>	corresponding to Human TCP1 alpha/CCTA (N terminal). Database link: <a href="#">P17987</a>
<b>Positive control</b>	HeLa, ECV-304, A459 and 293T cell lysates, Human colon tissue, Human kidney tissue and HeLa cells
<b>General notes</b>	Mouse, Rat: We have preliminary internal testing data to indicate this antibody may not react with these species. Please contact us for more information.

This product was previously labelled as TCP1 alpha

Our RabMAb<sup>®</sup> technology is a patented hybridoma-based technology for making rabbit monoclonal antibodies. For details on our patents, please refer to [RabMAb<sup>®</sup> patents](#).

This product is a [recombinant rabbit monoclonal antibody](#).

Properties

<b>Form</b>	Liquid
<b>Storage instructions</b>	Shipped at 4°C. Store at -20°C. Stable for 12 months at -20°C.
<b>Storage buffer</b>	pH: 7.20 Preservative: 0.05% Sodium azide Constituents: 0.1% BSA, 40% Glycerol, 9.85% Tris glycine, 50% Tissue culture supernatant
<b>Purity</b>	Tissue culture supernatant
<b>Clonality</b>	Monoclonal
<b>Clone number</b>	EPR4081

Isotype

IgG

## Applications

---

Our [Abpromise guarantee](#) covers the use of **ab92587** in the following tested applications.

The application notes include recommended starting dilutions; optimal dilutions/concentrations should be determined by the end user.

Application	Abreviews	Notes
ICC/IF		
WB		
IHC-P		
IP		

## Application notes

ICC: 1/250 - 1/500.

IHC-P: 1/100 - 1/250. Perform heat mediated antigen retrieval via the pressure cooker method before commencing with IHC staining protocol. The use of an HRP/AP polymerized antibody is recommended for a secondary antibody.

IP: 1/10 - 1/100.

WB: 1/10000 - 1/50000. Predicted molecular weight: 60 kDa.

Is unsuitable for Flow Cyt.

Not yet tested in other applications.

Optimal dilutions/concentrations should be determined by the end user.

## Target

---

### Function

Molecular chaperone; assists the folding of proteins upon ATP hydrolysis. As part of the BBS/CCT complex may play a role in the assembly of BBSome, a complex involved in ciliogenesis regulating transports vesicles to the cilia. Known to play a role, in vitro, in the folding of actin and tubulin.

### Sequence similarities

Belongs to the TCP-1 chaperonin family.

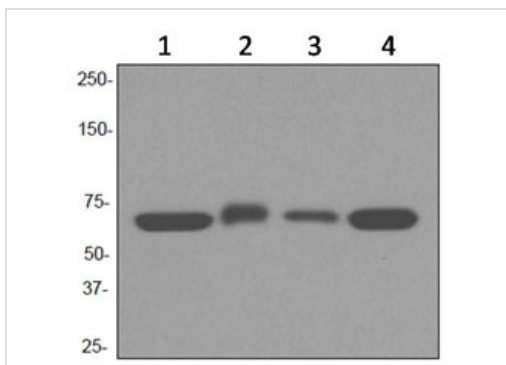
### Cellular localization

Cytoplasm. Cytoplasm > cytoskeleton > centrosome.

---

## Images

---



Western blot - Anti-TCP1 alpha/CCTA antibody [EPR4081] (ab92587)

**All lanes :** Anti-TCP1 alpha/CCTA antibody [EPR4081] (ab92587) at 1/10000 dilution

**Lane 1 :** HeLa cell lysate

**Lane 2 :** ECV-304 cell lysate

**Lane 3 :** A549 cell lysate

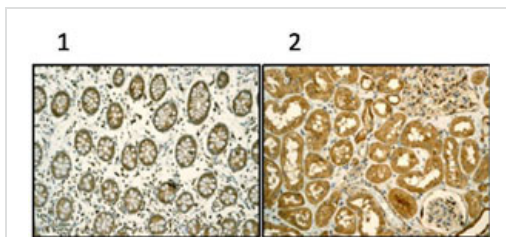
**Lane 4 :** 293T cell lysate

Lysates/proteins at 10 µg per lane.

### Secondary

**All lanes :** HRP labelled goat anti-rabbit at 1/2000 dilution

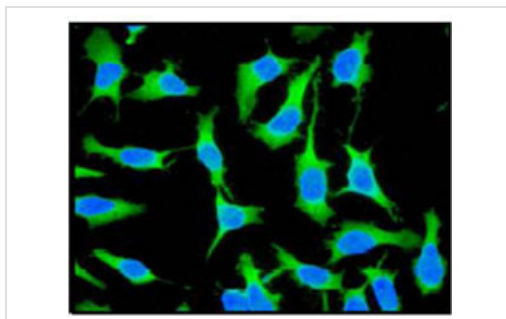
**Predicted band size:** 60 kDa



Immunohistochemistry (Formalin/PFA-fixed paraffin-embedded sections) - Anti-TCP1 alpha/CCTA antibody [EPR4081] (ab92587)

ab92587 at 1/100 dilution staining TCP1 alpha/CCTA in (1) Human colon tissue and (2) Human kidney tissue by Immunohistochemistry Formalin-fixed, Paraffin-embedded tissue. Detection: DAB staining.

Perform heat mediated antigen retrieval via the pressure cooker method before commencing with IHC staining protocol.



Immunocytochemistry/ Immunofluorescence - Anti-TCP1 alpha/CCTA antibody [EPR4081] (ab92587)

ab92587 at 1/250 dilution staining TCP1 alpha/CCTA in HeLa cells by Immunofluorescence.

## **Our Abpromise to you: Quality guaranteed and expert technical support**

---

- Replacement or refund for products not performing as stated on the datasheet
- Valid for 12 months from date of delivery
- Response to your inquiry within 24 hours
  
- We provide support in Chinese, English, French, German, Japanese and Spanish
- Extensive multi-media technical resources to help you
- We investigate all quality concerns to ensure our products perform to the highest standards

If the product does not perform as described on this datasheet, we will offer a refund or replacement. For full details of the Abpromise, please visit <https://www.abcam.com/abpromise> or contact our technical team.

## **Terms and conditions**

---

- Guarantee only valid for products bought direct from Abcam or one of our authorized distributors