




Product datasheet

Anti-TCP1 eta antibody ab237762

3 Images

Overview

Product name	Anti-TCP1 eta antibody
Description	Rabbit polyclonal to TCP1 eta
Host species	Rabbit
Tested applications	Suitable for: ICC/IF, IHC-P, WB
Species reactivity	Reacts with: Human Predicted to work with: Cow, Orangutan 
Immunogen	Recombinant fragment corresponding to Human TCP1 eta aa 240-543. Sequence: LNVELELKAEKDNAEIRVHTVEDYQAMDAEWNILYDKL EKIHHSQAKVV LSKLPIGDVATQYFADRDMFCAGRVPPEEDLKRTMMAC GGSIQTSVNALSA DVLGRCQVFEETQIGGERYNFFTGCPKAKTCTFILRGG AEQFMEETERSL HDAIMVRRRAIKNSVAVAGGAIEMELSKYLRDYSRTIP GKQQLLIGAYA KALEIIPRQLCDNAGFDATNILNKLRARHAQGGTWTYGV DINNEDIADNFE AFVWEPAMVRINALTAASEAACLMSVDETIKNPRSTV DAPTAAGRGRGR GRPH Database link: Q99832-1  Run BLAST with  Run BLAST with
Positive control	WB: K562 and HEK-293 whole cell lysates. IHC-P: Human glioma tissue. ICC/IF: MCF7 cells.

Properties

Form	Liquid
Storage instructions	Shipped at 4°C. Store at +4°C short term (1-2 weeks). Upon delivery aliquot. Store at -20°C long term. Avoid freeze / thaw cycle.
Storage buffer	pH: 7.40 Preservative: 0.03% Proclin

	Constituents: 50% Glycerol, PBS
Purity	Protein G purified
Purification notes	Purity greater than 95%.
Clonality	Polyclonal
Isotype	IgG

Applications

Our [Abpromise guarantee](#) covers the use of **ab237762** in the following tested applications.

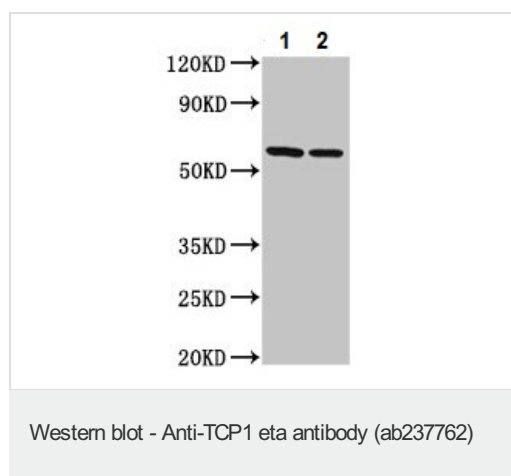
The application notes include recommended starting dilutions; optimal dilutions/concentrations should be determined by the end user.

Application	Abreviews	Notes
ICC/IF		1/50 - 1/200.
IHC-P		1/20 - 1/200. Perform heat mediated antigen retrieval with citrate buffer pH 6 before commencing with IHC staining protocol.
WB		1/500 - 1/5000. Predicted molecular weight: 59 kDa.

Target

Function	Molecular chaperone; assists the folding of proteins upon ATP hydrolysis. Known to play a role, in vitro, in the folding of actin and tubulin.
Sequence similarities	Belongs to the TCP-1 chaperonin family.
Cellular localization	Cytoplasm.

Images



All lanes : Anti-TCP1 eta antibody (ab237762) at 1/500 dilution

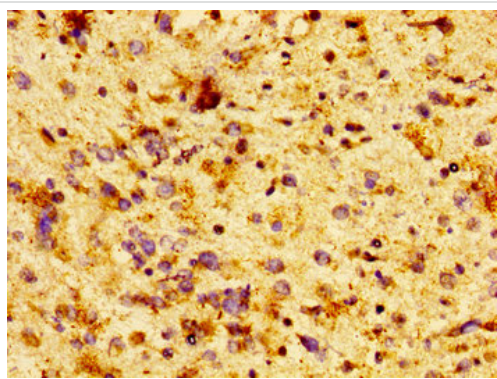
Lane 1 : K562 (human chronic myelogenous leukemia cell line from bone marrow) whole cell lysate

Lane 2 : HEK-293 (human epithelial cell line from embryonic kidney) whole cell lysate

Secondary

All lanes : Goat polyclonal to rabbit IgG at 1/50000 dilution

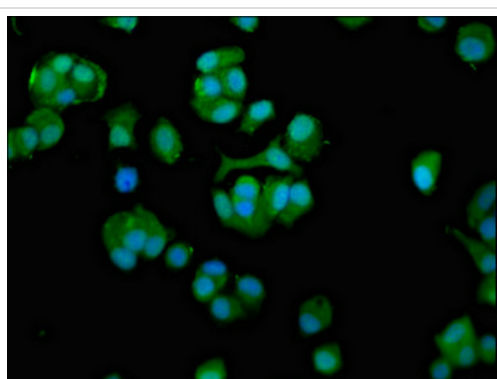
Predicted band size: 59 kDa



Immunohistochemistry (Formalin/PFA-fixed paraffin-embedded sections) - Anti-TCP1 eta antibody (ab237762)

Paraffin-embedded human glioma tissue stained for TCP1 eta with ab237762 at 1/100 dilution in immunohistochemical analysis.

After dewaxing and hydration, antigen retrieval was mediated by high pressure in a citrate buffer (pH 6.0). Section was blocked with 10% normal goat serum 30 minutes at RT. Then primary antibody (1% BSA) was incubated at 4°C overnight. The primary is detected by a biotinylated secondary antibody and visualized using an HRP conjugated SP system.



Immunocytochemistry/ Immunofluorescence - Anti-TCP1 eta antibody (ab237762)

MCF7 (human breast adenocarcinoma cell line) cells stained for TCP1 eta using ab237762 at 1/100 dilution in ICC/IF.

The cells were fixed in 4% formaldehyde, permeabilized using 0.2% Triton X-100 and blocked in 10% normal goat serum. The cells were then incubated with the primary antibody overnight at 4°C. Secondary used is an Alexa-Fluor®488-conjugated Goat Anti-Rabbit IgG (H+L). Counterstained with DAPI.

Please note: All products are "FOR RESEARCH USE ONLY. NOT FOR USE IN DIAGNOSTIC PROCEDURES"

Our Abpromise to you: Quality guaranteed and expert technical support

- Replacement or refund for products not performing as stated on the datasheet
- Valid for 12 months from date of delivery
- Response to your inquiry within 24 hours
- We provide support in Chinese, English, French, German, Japanese and Spanish
- Extensive multi-media technical resources to help you
- We investigate all quality concerns to ensure our products perform to the highest standards

If the product does not perform as described on this datasheet, we will offer a refund or replacement. For full details of the Abpromise, please visit <https://www.abcam.com/abpromise> or contact our technical team.

Terms and conditions

- Guarantee only valid for products bought direct from Abcam or one of our authorized distributors