


Product datasheet

Anti-TdT antibody - C-terminal ab226953

[2 Images](#)

Overview

Product name	Anti-TdT antibody - C-terminal
Description	Rabbit polyclonal to TdT - C-terminal
Host species	Rabbit
Tested applications	Suitable for: WB
Species reactivity	Reacts with: Human Predicted to work with: Rhesus monkey 
Immunogen	Recombinant fragment within Human TdT (C terminal). The exact sequence is proprietary. Database link: P04053
Positive control	WB: Jurkat whole cell and nuclear extracts; TdT transfected HEK-293T whole cell extract.

Properties

Form	Liquid
Storage instructions	Shipped at 4°C. Store at +4°C short term (1-2 weeks). Upon delivery aliquot. Store at -20°C long term. Avoid freeze / thaw cycle.
Storage buffer	pH: 7.00 Preservative: 0.025% Proclin Constituents: PBS, 20% Glycerol
Purity	Immunogen affinity purified
Clonality	Polyclonal
Isotype	IgG

Applications

Our [Abpromise guarantee](#) covers the use of **ab226953** in the following tested applications.

The application notes include recommended starting dilutions; optimal dilutions/concentrations should be determined by the end user.

Application	Abreviews	Notes
WB		1/500 - 1/10000. Predicted molecular weight: 59 kDa.

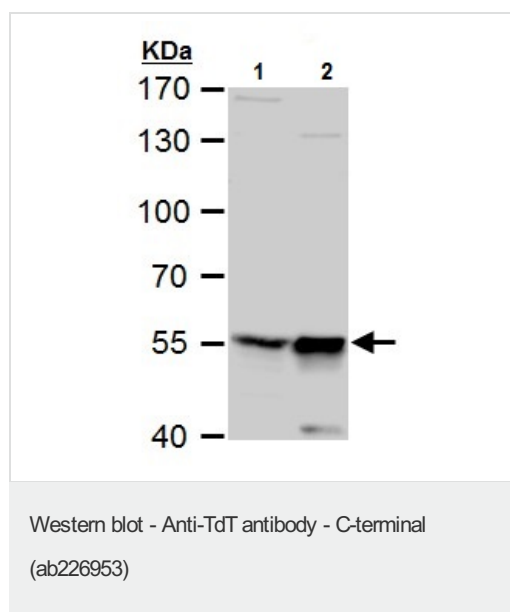
Target

Function Template-independent DNA polymerase which catalyzes the random addition of deoxynucleoside 5'-triphosphate to the 3'-end of a DNA initiator. One of the in vivo functions of this enzyme is the addition of nucleotides at the junction (N region) of rearranged Ig heavy chain and T-cell receptor gene segments during the maturation of B- and T-cells.

Sequence similarities Belongs to the DNA polymerase type-X family.
Contains 1 BRCT domain.

Cellular localization Nucleus.

Images



All lanes : Anti-TdT antibody - C-terminal (ab226953) at 1/500 dilution

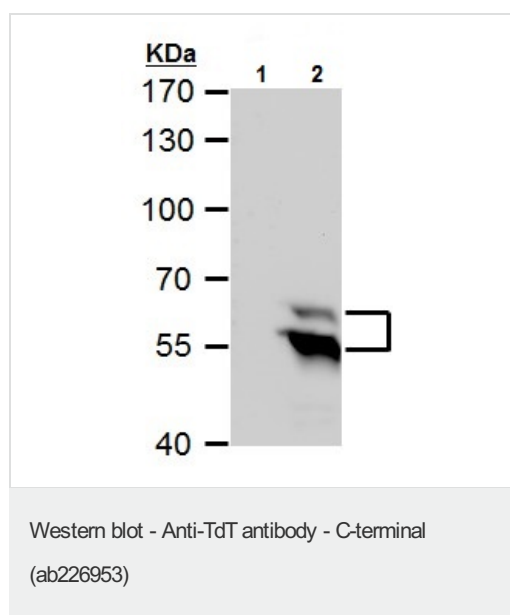
Lane 1 : Jurkat (human T cell leukemia cell line from peripheral blood) whole cell extract

Lane 2 : Jurkat (human T cell leukemia cell line from peripheral blood) nuclear extract

Lysates/proteins at 30 µg per lane.

Predicted band size: 59 kDa

7.5 % SDS-PAGE gel.



All lanes : Anti-TdT antibody - C-terminal (ab226953) at 1/5000 dilution

Lane 1 : Non-transfected HEK-293T (human epithelial cell line from embryonic kidney transformed with large T antigen) whole cell extract

Lane 2 : TdT transfected HEK-293T (human epithelial cell line from embryonic kidney transformed with large T antigen) whole cell extract

Lysates/proteins at 30 µg per lane.

Predicted band size: 59 kDa

7.5 % SDS-PAGE gel.

Please note: All products are "FOR RESEARCH USE ONLY. NOT FOR USE IN DIAGNOSTIC PROCEDURES"

Our Abpromise to you: Quality guaranteed and expert technical support

- Replacement or refund for products not performing as stated on the datasheet
- Valid for 12 months from date of delivery
- Response to your inquiry within 24 hours

- We provide support in Chinese, English, French, German, Japanese and Spanish
- Extensive multi-media technical resources to help you
- We investigate all quality concerns to ensure our products perform to the highest standards

If the product does not perform as described on this datasheet, we will offer a refund or replacement. For full details of the Abpromise, please visit <https://www.abcam.com/abpromise> or contact our technical team.

Terms and conditions

- Guarantee only valid for products bought direct from Abcam or one of our authorized distributors