

## Product datasheet

# Anti-TEM1 antibody ab67273

★★★★★ 1 Abreviews 3 Images

### Overview

<b>Product name</b>	Anti-TEM1 antibody
<b>Description</b>	Rabbit polyclonal to TEM1
<b>Host species</b>	Rabbit
<b>Specificity</b>	ab67273 recognizes both isoforms of TEM1.
<b>Tested applications</b>	<b>Suitable for:</b> ICC/IF, WB, IHC-P
<b>Species reactivity</b>	<b>Reacts with:</b> Mouse, Rat, Human
<b>Immunogen</b>	A 14 amino acid synthetic peptide derived from near the carboxy terminus of the human TEM1.
<b>Positive control</b>	Human colon tissue lysate and human colon tissue.

### Properties

<b>Form</b>	Liquid
<b>Storage instructions</b>	Shipped at 4°C. Store at +4°C.
<b>Storage buffer</b>	Preservative: 0.02% Sodium azide Constituent: PBS
<b>Purity</b>	Immunogen affinity purified
<b>Clonality</b>	Polyclonal
<b>Isotype</b>	IgG

### Applications

Our [Abpromise guarantee](#) covers the use of **ab67273** in the following tested applications.

The application notes include recommended starting dilutions; optimal dilutions/concentrations should be determined by the end user.

Application	Abreviews	Notes
ICC/IF		
WB		
IHC-P	★★★★★	

**Application notes**

IHC-P: Use at an assay dependent dilution.

WB: Use at a concentration of 0.5 - 1 µg/ml. Detects a band of approximately 85 & 50 kDa (predicted molecular weight: 80 kDa).

Not yet tested in other applications.

Optimal dilutions/concentrations should be determined by the end user.

**Target**

---

**Function**

May play a role in tumor angiogenesis.

**Tissue specificity**

Expressed in tumor endothelial cells but absent or barely detectable in normal endothelial cells. Expressed in metastatic lesions of the liver and during angiogenesis of corpus luteum formation and wound healing. Expressed in vascular endothelial cells of malignant tumors but not in normal blood vessels. Expressed in stromal fibroblasts.

**Sequence similarities**

Contains 1 C-type lectin domain.

Contains 1 EGF-like domain.

Contains 1 Sushi (CCP/SCR) domain.

**Post-translational modifications**

O-glycosylated with sialylated oligosaccharides.

May be N-glycosylated.

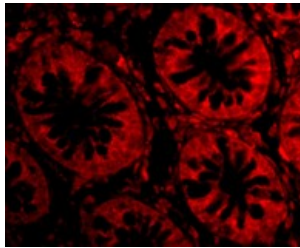
**Cellular localization**

Membrane.

---

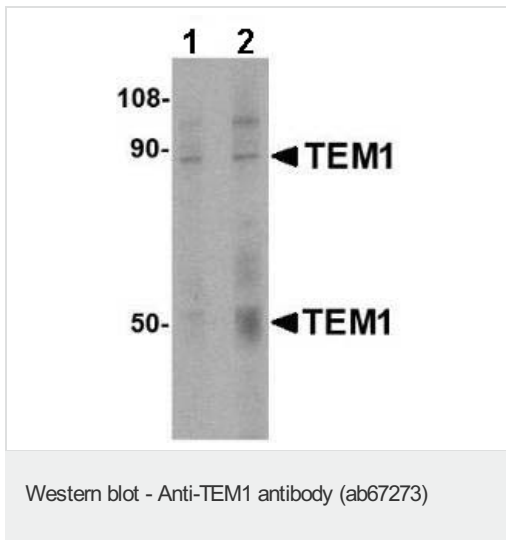
**Images**

---



Immunofluorescence of TEM1 in Human Colon cells using ab67273 at 20 µg/ml.

Immunocytochemistry/ Immunofluorescence - Anti-TEM1 antibody (ab67273)



**Lane 1 :** Anti-TEM1 antibody (ab67273) at 0.5 µg/ml

**Lane 2 :** Anti-TEM1 antibody (ab67273) at 1 µg/ml

**All lanes :** Human colon tissue lysate

Lysates/proteins at 15 µg per lane.

**Secondary**

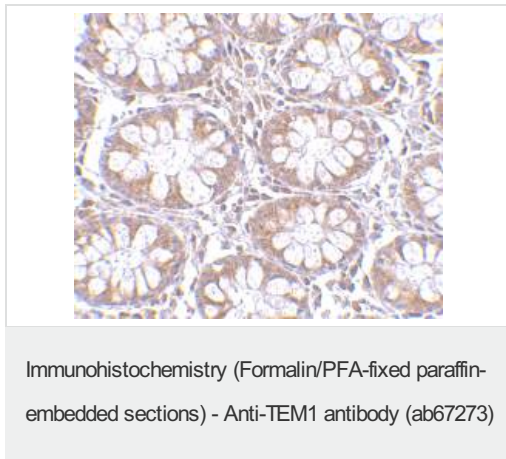
**All lanes :** anti rabbit secondary antibody

**Predicted band size:** 50, 80 kDa

**Observed band size:** 50,80 kDa

[why is the actual band size different from the predicted?](#)

**Additional bands at:** 100 kDa. We are unsure as to the identity of these extra bands.



ab67273 at 2.5 µg/ml.in staining of TEM1 in human colon tissue using IHC-P.

**Please note:** All products are "FOR RESEARCH USE ONLY. NOT FOR USE IN DIAGNOSTIC PROCEDURES"

### Our Abpromise to you: Quality guaranteed and expert technical support

- Replacement or refund for products not performing as stated on the datasheet
- Valid for 12 months from date of delivery
- Response to your inquiry within 24 hours
- We provide support in Chinese, English, French, German, Japanese and Spanish
- Extensive multi-media technical resources to help you
- We investigate all quality concerns to ensure our products perform to the highest standards

If the product does not perform as described on this datasheet, we will offer a refund or replacement. For full details of the Abpromise, please visit <https://www.abcam.com/abpromise> or contact our technical team.

### Terms and conditions

- Guarantee only valid for products bought direct from Abcam or one of our authorized distributors