

Product datasheet

TEO-Tricine Precast Gels - RunBlue™ (8%, 12-well, 8x10cm) ab139594

3 Images

Overview

Product name	TEO-Tricine Precast Gels - RunBlue™ (8%, 12-well, 8x10cm)
Tested applications	Suitable for: SDS-PAGE
General notes	<p>This product is manufactured by Expedeon, an Abcam company, and was previously called RunBlue™ TEO-Tricine SDS Mini Gels 8% 12 well - 8x10. BCG00812 is the same as the 10 units size.</p> <p>This gel ab139594 is one of our RunBlue™ precast gels which offer superior rigidity and stability over traditional polyacrylamide gels and are compatible with the most common tanks and systems. For convenience the precast gels come with the comb already removed as the cassette locks the fingers in place, for additional convenience there is no tape to be removed and cassettes can be opened by hand.</p> <p>RunBlue™ gels must be used with RunBlue™ buffer</p> <p>Learn more about RunBlue™ Precast Gels in our FAQs.</p> <p>Number of Wells: 12</p> <p>This product was previously called Optiblot SDS Gel 8% (8 x 10cm) - 12 Well.</p> <p>Manufactured under patent number: US 5,769.22.</p> <p>For more information including tank system compatibility, please see our guide: 'SDS-PAGE gels for protein electrophoresis'.</p> <p>https://www.abcam.com/reagents/sds-page-gels-for-protein-electrophoresis</p>

Properties

Form	Paste / Gel
Storage instructions	Store at Room Temperature. Store at +4°C.
Storage buffer	pH: 7.8 Constituents: 0.2% Sodium lauryl sulfate, 5% Triethanolamine, 8% Polyacrylamide, 0.02% Acrylamide, 0.002% Bis-acrylamide

Applications

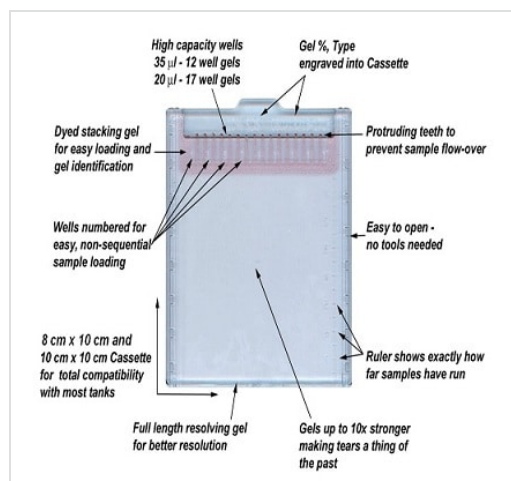
The Abpromise guarantee

Our [Abpromise guarantee](#) covers the use of ab139594 in the following tested applications.

The application notes include recommended starting dilutions; optimal dilutions/concentrations should be determined by the end user.

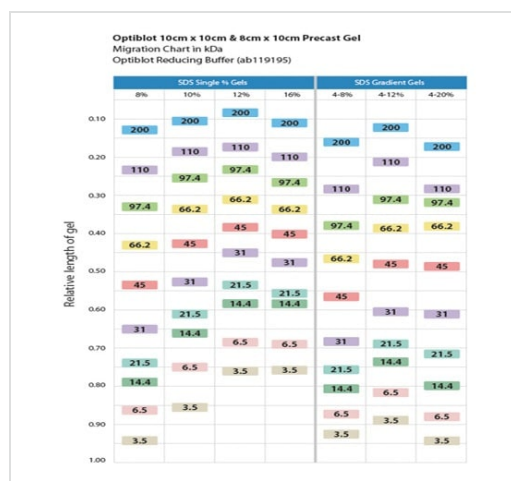
Application	Abreviews	Notes
SDS-PAGE		Use at an assay dependent concentration.

Images



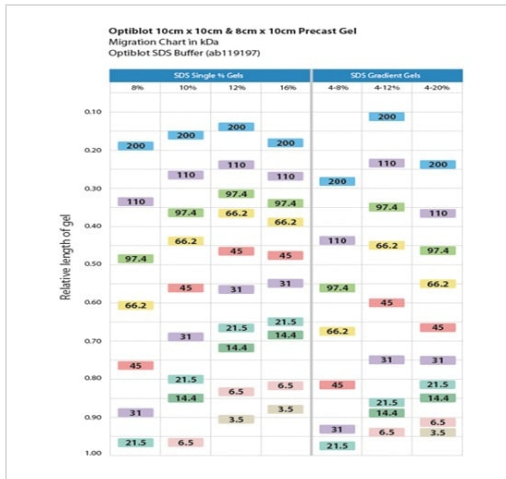
Gel benefits - Click to expand

SDS-PAGE - TEO-Tricine Precast Gels - RunBlue™
(8%, 12-well, 8x10cm) (ab139594)



Migration Chart in kDa with Reducing Buffer (ab119195) - Click to expand

SDS-PAGE - TEO-Tricine Precast Gels - RunBlue™
(8%, 12-well, 8x10cm) (ab139594)



Migration Chart in kDa with SDS Buffer ([ab119197](#)) - Click to expand

SDS-PAGE - TEO-Tricine Precast Gels - RunBlue™
(8%, 12-well, 8x10cm) (ab139594)

Please note: All products are "FOR RESEARCH USE ONLY. NOT FOR USE IN DIAGNOSTIC PROCEDURES"

Our Abpromise to you: Quality guaranteed and expert technical support

- Replacement or refund for products not performing as stated on the datasheet
- Valid for 12 months from date of delivery
- Response to your inquiry within 24 hours
- We provide support in Chinese, English, French, German, Japanese and Spanish
- Extensive multi-media technical resources to help you
- We investigate all quality concerns to ensure our products perform to the highest standards

If the product does not perform as described on this datasheet, we will offer a refund or replacement. For full details of the Abpromise, please visit <https://www.abcam.com/abpromise> or contact our technical team.

Terms and conditions

- Guarantee only valid for products bought direct from Abcam or one of our authorized distributors