

Product datasheet

TEO-Tricine Precast Gels - RunBlue™ (8%, 17-well, 8x10cm) ab139604

★★★★★ 1 Abreviews 4 Images

Overview

| | |
|----------------------------|---|
| Product name | TEO-Tricine Precast Gels - RunBlue™ (8%, 17-well, 8x10cm) |
| Tested applications | Suitable for: SDS-PAGE |
| General notes | <p>This product is manufactured by Expedeon, an Abcam company, and was previously called RunBlue™ TEO-Tricine SDS Mini Gels 8% 17 well - 8x10. BCG00827 is the same as the 10 units size.</p> <p>This gel is one of our RunBlue™ precast gels which offer superior rigidity and stability over traditional polyacrylamide gels and are compatible with the most common tanks and systems. For convenience the precast gels come with the comb already removed as the cassette locks the fingers in place, for additional convenience there is no tape to be removed and cassettes can be opened by hand.</p> <p>Learn more about RunBlue™ Precast Gels in our FAQs.</p> <p>RunBlue™ gels must be used with RunBlue™ buffers.</p> <p>Number of Wells: 17</p> <p>This product was previously called Optiblot SDS Gel 8% (8 x 10cm) - 17 Well.</p> <p>Manufactured under patent number US 5,769.22.</p> <p>For more information including tank system compatibility, please see our guide: 'SDS-PAGE gels for protein electrophoresis'.</p> <p>https://www.abcam.com/reagents/sds-page-gels-for-protein-electrophoresis</p> |

Properties

| | |
|-----------------------------|---|
| Form | Paste / Gel |
| Storage instructions | Store at Room Temperature. Store at +4°C. |
| Storage buffer | pH: 7.8 Constituents: 0.2% Sodium lauryl sulfate, 5% Triethanolamine, 8% Polyacrylamide, 0.02% Acrylamide, 0.002% Bis-acrylamide |

Applications

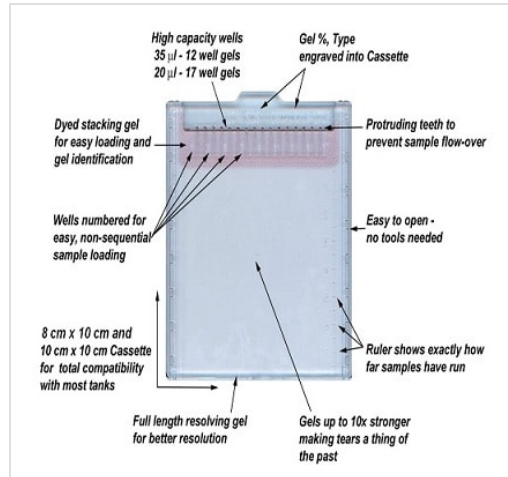
The Abpromise guarantee

Our [Abpromise guarantee](#) covers the use of ab139604 in the following tested applications.

The application notes include recommended starting dilutions; optimal dilutions/concentrations should be determined by the end user.

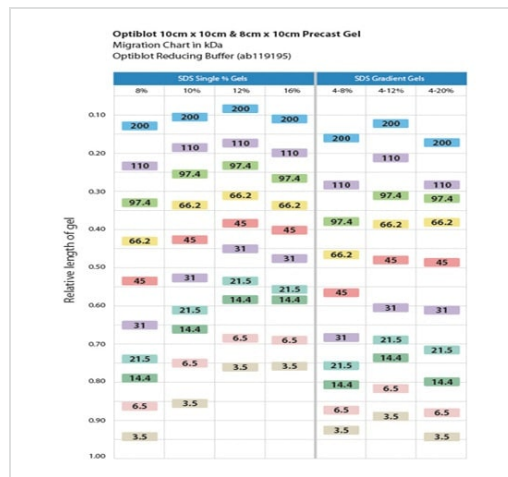
| Application | Abreviews | Notes |
|-------------|-----------|--|
| SDS-PAGE | | Use at an assay dependent concentration. |

Images



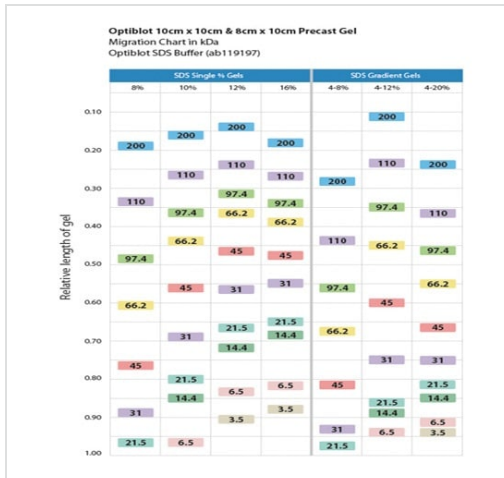
Gel benefits - Click to expand

SDS-PAGE - TEO-Tricine Precast Gels - RunBlue™
(8%, 17-well, 8x10cm) (ab139604)



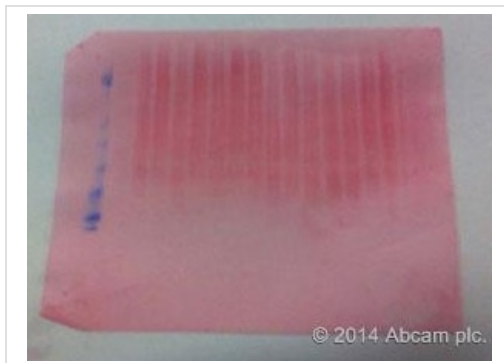
Migration Chart in kDa with Reducing Buffer ([ab119195](#)) - Click to expand

SDS-PAGE - TEO-Tricine Precast Gels - RunBlue™
(8%, 17-well, 8x10cm) (ab139604)



Migration Chart in kDa with SDS Buffer ([ab119197](#)) - Click to expand

SDS-PAGE - TEO-Tricine Precast Gels - RunBlue™
(8%, 17-well, 8x10cm) (ab139604)



SDS-PAGE - TEO-Tricine Precast Gels - RunBlue™
(8%, 17-well, 8x10cm) (ab139604)

This image is courtesy of an Abreview submitted by Raj Badhan

SDS-PAGE using ab139604 - Optiblot SDS Gel 8% (8 x 10cm) - 17 Well (ab139604). Protein was extracted using RIPA buffer extraction, followed by treatment at 37°C for 30 minutes in Optiblot LDS Sample Buffer (4X). 100µg was loaded per well and run for 45 minutes at 180V. An Optiblot Low Fluorescence membrane was used for blotting in a tank system and run at 50V for 2 hours and 30 minutes using Optiblot TGS Blot Buffer. The membrane as washed in TBST twice (20 seconds each), methanol for 10 seconds, left to dry for 5 seconds before being stained with Ponceau-S for 2 minutes and washed with TBST for 2 minutes to visualise bands. Lane 1: Broad range molecular weight marker. Lane 2-17: 100µg whole cell lysate.

Please note: All products are "FOR RESEARCH USE ONLY. NOT FOR USE IN DIAGNOSTIC PROCEDURES"

Our Abpromise to you: Quality guaranteed and expert technical support

- Replacement or refund for products not performing as stated on the datasheet
- Valid for 12 months from date of delivery
- Response to your inquiry within 24 hours
- We provide support in Chinese, English, French, German, Japanese and Spanish
- Extensive multi-media technical resources to help you
- We investigate all quality concerns to ensure our products perform to the highest standards

If the product does not perform as described on this datasheet, we will offer a refund or replacement. For full details of the Abpromise,

please visit <https://www.abcam.com/abpromise> or contact our technical team.

Terms and conditions

- Guarantee only valid for products bought direct from Abcam or one of our authorized distributors