




Product datasheet

Anti-TFB1M antibody ab236901

4 Images

Overview

| | |
|----------------------------|---------------------------------------------------------------------------------------------------------------------------------------------------------------------------------------------------------------------------------------------------------------------------------------------------------------------------------------------------------------------------------------------------------------------------------------------------------------------------------------------------------------------------------------------------------------------------------------------------------------------------------------------------------------------------------------------------------------------------------------------------------------------------------------------------------------------------------------------------------------------------------------------------------------------------------------------------------------------------------------------------------------------------------------------------------------------------------------------------------------------------------|
| Product name | Anti-TFB1M antibody |
| Description | Rabbit polyclonal to TFB1M |
| Host species | Rabbit |
| Tested applications | Suitable for: WB, IHC-P, ICC/IF |
| Species reactivity | Reacts with: Human Predicted to work with: Cynomolgus monkey, Orangutan  |
| Immunogen | Recombinant fragment corresponding to Human TFB1M aa 59-194. Sequence: VYEVGPGPGGITRSILNADVAELLVVEKDTRFIPGLQMLSD AAPGKLRIV HGDVLTFKVEKAFSESLKRPWEDDPPNVHIGNLPFSVST PLIIKWLENI SCRDGPFVYGRQTQMLTFQKEVAERLAANTGSKQRS Database link: Q8WVM0  Run BLAST with  Run BLAST with |
| Positive control | WB: A549 whole cell lysate. IHC-P: Human pancreatic cancer and liver cancer tissues. ICC/IF: HepG2 cells. |
| General notes | <p>Reproducibility is key to advancing scientific discovery and accelerating scientists' next breakthrough.</p> <p>Abcam is leading the way with our range of recombinant antibodies, knockout-validated antibodies and knockout cell lines, all of which support improved reproducibility.</p> <p>We are also planning to innovate the way in which we present recommended applications and species on our product datasheets, so that only applications & species that have been tested in our own labs, our suppliers or by selected trusted collaborators are covered by our Abpromise™ guarantee.</p> <p>In preparation for this, we have started to update the applications & species that this product is Abpromise guaranteed for.</p> <p>We are also updating the applications & species that this product has been “predicted to work with,” however this information is not covered by our Abpromise guarantee.</p> <p>Applications & species from publications and Abreviews that have not been tested in our own labs or in those of our suppliers are not covered by the Abpromise guarantee.</p> |

Please check that this product meets your needs before purchasing. If you have any questions, special requirements or concerns, please send us an inquiry and/or contact our Support team ahead of purchase. Recommended alternatives for this product can be found below, as well as customer reviews and Q&As.

Properties

| | |
|-----------------------------|-----------------------------------------------------------------------------------------------------------------------------------|
| Form | Liquid |
| Storage instructions | Shipped at 4°C. Store at +4°C short term (1-2 weeks). Upon delivery aliquot. Store at -20°C long term. Avoid freeze / thaw cycle. |
| Storage buffer | pH: 7.40 Constituents: 50% Glycerol (glycerin, glycerine), PBS, 0.03% Proclin 300 |
| Purity | Protein G purified |
| Purification notes | Purity >95%. |
| Clonality | Polyclonal |
| Isotype | IgG |

Applications

Our [Abpromise guarantee](#) covers the use of **ab236901** in the following tested applications.

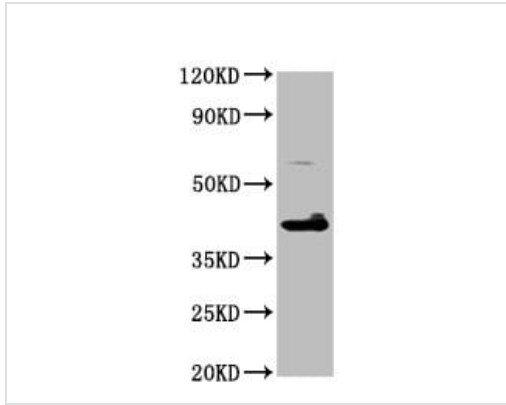
The application notes include recommended starting dilutions; optimal dilutions/concentrations should be determined by the end user.

| Application | Abreviews | Notes |
|-------------|-----------|-----------------------------------------------------|
| WB | | 1/500 - 1/5000. Predicted molecular weight: 39 kDa. |
| IHC-P | | 1/500 - 1/1000. |
| ICC/IF | | 1/50 - 1/200. |

Target

| | |
|-------------------------------|---------------------------------------------------------------------------------------------------------------------------------------------------------------------------------------------------------------------------------------------------------------------------------------------------------------------------------|
| Function | S-adenosyl-L-methionine-dependent methyltransferase which specifically dimethylates mitochondrial 12S rRNA at the conserved stem loop. Also required for basal transcription of mitochondrial DNA, probably via its interaction with POLRMT and TFAM. Stimulates transcription independently of the methyltransferase activity. |
| Tissue specificity | Ubiquitously expressed. |
| Involvement in disease | Note=Variations in TFB1M may influence the clinical expression of aminoglycoside-induced deafness caused by the A1555G mutation in the mitochondrial 12S rRNA. |
| Sequence similarities | Belongs to the methyltransferase superfamily. rRNA adenine N(6)-methyltransferase family. KsgA subfamily. |
| Cellular localization | Mitochondrion. |

Images



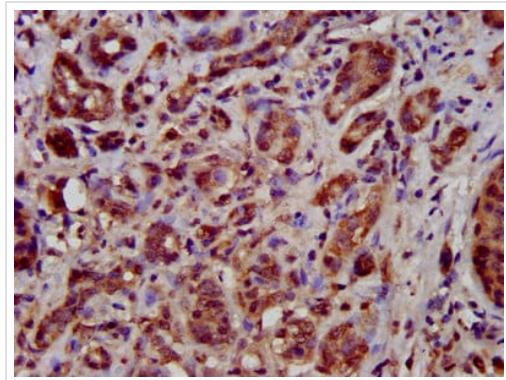
Western blot - Anti-TFB1M antibody (ab236901)

Anti-TFB1M antibody (ab236901) at 1/500 dilution + A549 (Human lung carcinoma cell line) whole cell lysate

Secondary

Goat polyclonal to rabbit IgG at 1/50000 dilution

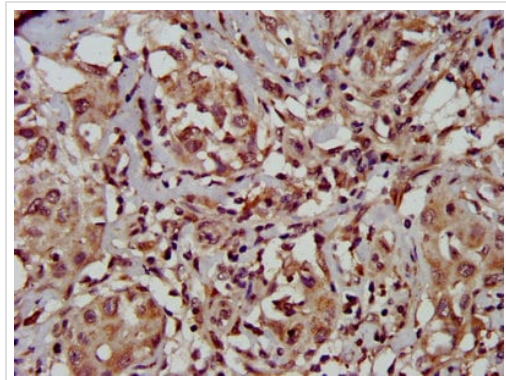
Predicted band size: 39 kDa



Immunohistochemistry (Formalin/PFA-fixed paraffin-embedded sections) - Anti-TFB1M antibody (ab236901)

Paraffin-embedded human pancreatic cancer tissue stained for TFB1M using ab236901 at 1/500 dilution in immunohistochemical analysis.

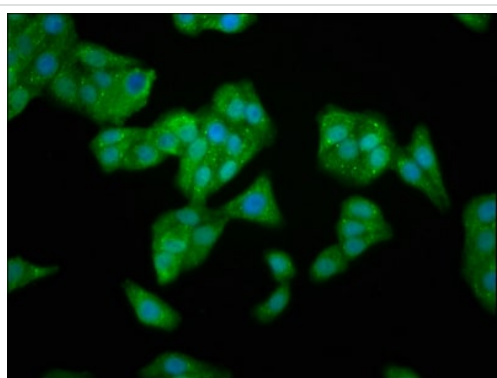
After dewaxing and hydration, antigen retrieval was mediated by high pressure in a citrate buffer (pH 6.0). Section was blocked with 10% normal goat serum 30 minutes at RT. Then primary antibody (1% BSA) was incubated at 4°C overnight. The primary is detected by a biotinylated secondary antibody and visualized using an HRP conjugated SP system.



Immunohistochemistry (Formalin/PFA-fixed paraffin-embedded sections) - Anti-TFB1M antibody (ab236901)

Paraffin-embedded human liver cancer tissue stained for TFB1M using ab236901 at 1/500 dilution in immunohistochemical analysis.

After dewaxing and hydration, antigen retrieval was mediated by high pressure in a citrate buffer (pH 6.0). Section was blocked with 10% normal goat serum 30 minutes at RT. Then primary antibody (1% BSA) was incubated at 4°C overnight. The primary is detected by a biotinylated secondary antibody and visualized using an HRP conjugated SP system.



Immunocytochemistry/ Immunofluorescence - Anti-TFB1M antibody (ab236901)

HepG2 (Human liver hepatocellular carcinoma cell line) cells stained for TFB1M (green) using ab236901 at 1/166 dilution in ICC/IF, followed by an Alexa-Fluor[®]488 conjugated Goat Anti-Rabbit IgG (H+L). Counter-stained with DAPI. The cells were fixed in 4% formaldehyde, permeabilized using 0.2% Triton X-100 and blocked in 10% normal goat serum. The cells were then incubated with the primary antibody overnight at 4°C.

Please note: All products are "FOR RESEARCH USE ONLY. NOT FOR USE IN DIAGNOSTIC PROCEDURES"

Our Abpromise to you: Quality guaranteed and expert technical support

- Replacement or refund for products not performing as stated on the datasheet
- Valid for 12 months from date of delivery
- Response to your inquiry within 24 hours
- We provide support in Chinese, English, French, German, Japanese and Spanish
- Extensive multi-media technical resources to help you
- We investigate all quality concerns to ensure our products perform to the highest standards

If the product does not perform as described on this datasheet, we will offer a refund or replacement. For full details of the Abpromise, please visit <https://www.abcam.com/abpromise> or contact our technical team.

Terms and conditions

- Guarantee only valid for products bought direct from Abcam or one of our authorized distributors