


Product datasheet

Anti-TFE3 antibody ab93808

★★★★★ 1 Abreviews 3 References 2 Images

Overview

Product name	Anti-TFE3 antibody
Description	Rabbit polyclonal to TFE3
Host species	Rabbit
Tested applications	Suitable for: WB, IP
Species reactivity	Reacts with: Human Predicted to work with: Mouse, Rat, Horse, Guinea pig, Cow, Dog, Pig, Chimpanzee, Rhesus monkey, Gorilla, Chinese hamster, Elephant 
Immunogen	Synthetic peptide from a region within amino acids 500-550 of Human TFE3 (NP_006512.2)
Positive control	HeLa and 293T cells
General notes	<p>Reproducibility is key to advancing scientific discovery and accelerating scientists' next breakthrough.</p> <p>Abcam is leading the way with our range of recombinant antibodies, knockout-validated antibodies and knockout cell lines, all of which support improved reproducibility.</p> <p>We are also planning to innovate the way in which we present recommended applications and species on our product datasheets, so that only applications & species that have been tested in our own labs, our suppliers or by selected trusted collaborators are covered by our Abpromise™ guarantee.</p> <p>In preparation for this, we have started to update the applications & species that this product is Abpromise guaranteed for.</p> <p>We are also updating the applications & species that this product has been “predicted to work with,” however this information is not covered by our Abpromise guarantee.</p> <p>Applications & species from publications and Abreviews that have not been tested in our own labs or in those of our suppliers are not covered by the Abpromise guarantee.</p> <p>Please check that this product meets your needs before purchasing. If you have any questions, special requirements or concerns, please send us an inquiry and/or contact our Support team ahead of purchase. Recommended alternatives for this product can be found below, as well as customer reviews and Q&As.</p>

Properties

Form	Liquid
-------------	--------

Storage instructions	Shipped at 4°C. Upon delivery aliquot and store at -20°C. Avoid freeze / thaw cycles.
Storage buffer	pH: 6.8 Preservative: 0.09% Sodium azide Constituents: 0.1% BSA, Tris buffered saline
Purity	Immunogen affinity purified
Clonality	Polyclonal
Isotype	IgG

Applications

Our [Abpromise guarantee](#) covers the use of **ab93808** in the following tested applications.

The application notes include recommended starting dilutions; optimal dilutions/concentrations should be determined by the end user.

Application	Abreviews	Notes
WB		
IP		

Application notes

IP: Use at a concentration of 2-5 µg/mg lysate.
WB: 1/2000 - 1/10000. Predicted molecular weight: 62 kDa.

Not yet tested in other applications.
Optimal dilutions/concentrations should be determined by the end user.

Target

Function

Transcription factor that specifically recognizes and binds E-box sequences (3'-CANNTG-5'). Efficient DNA-binding requires dimerization with itself or with another MiT/TFE family member such as TFEB or MITF. In association with TFEB, activates the expression of CD40L in T-cells, thereby playing a role in T-cell-dependent antibody responses in activated CD4(+) T-cells and thymus-dependent humoral immunity. Specifically recognizes the MUE3 box, a subset of E-boxes, present in the immunoglobulin enhancer. It also binds very well to a USF/MLTF site.

Tissue specificity

Ubiquitous in fetal and adult tissues.

Involvement in disease

Note=A chromosomal aberration involving TFE3 is found in patients with alveolar soft part sarcoma. Translocation t(X;17)(p11;q25) with ASPSCR1 forms a ASPSCR1-TFE3 fusion protein.
Note=Chromosomal aberrations involving TFE3 are found in patients with papillary renal cell carcinoma. Translocation t(X;1)(p11.2;q21.2) with PRCC; translocation t(X;1)(p11.2;p34) with PSF; inversion inv(X)(p11.2;q12) that fuses NONO to TFE3.

Sequence similarities

Belongs to the MiT/TFE family.
Contains 1 basic helix-loop-helix (bHLH) domain.

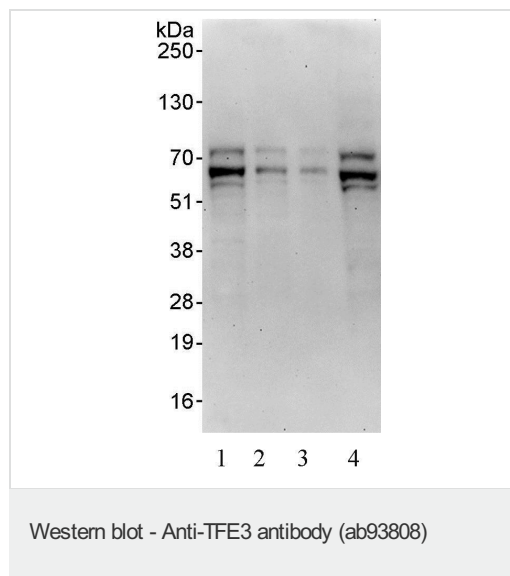
Post-translational modifications

Sumoylated; does not affect dimerization with MITF.

Cellular localization

Nucleus.

Images



All lanes : Anti-TFE3 antibody (ab93808) at 0.04 µg/ml

Lane 1 : HeLa whole lysate at 50 µg

Lane 2 : HeLa whole lysate at 15 µg

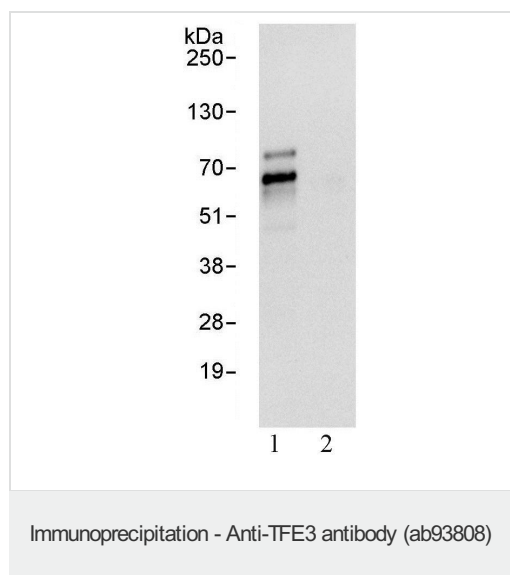
Lane 3 : HeLa whole lysate at 5 µg

Lane 4 : 293T cell lysate at 50 µg

Developed using the ECL technique.

Predicted band size: 62 kDa

Exposure time: 3 minutes



1 mg HeLa cell lysate was immunoprecipitated with 3µg/mg ab93808 (lane 1) or control IgG (lane 2). 20% of the immunoprecipitates were analysed by Western blot. Bands were analysed using ab93808 at 0.4µg/ml and developed using cheiluminescence.

Please note: All products are "FOR RESEARCH USE ONLY. NOT FOR USE IN DIAGNOSTIC PROCEDURES"

Our Abpromise to you: Quality guaranteed and expert technical support

- Replacement or refund for products not performing as stated on the datasheet
- Valid for 12 months from date of delivery
- Response to your inquiry within 24 hours
- We provide support in Chinese, English, French, German, Japanese and Spanish
- Extensive multi-media technical resources to help you
- We investigate all quality concerns to ensure our products perform to the highest standards

If the product does not perform as described on this datasheet, we will offer a refund or replacement. For full details of the Abpromise,

please visit <https://www.abcam.com/abpromise> or contact our technical team.

Terms and conditions

- Guarantee only valid for products bought direct from Abcam or one of our authorized distributors