



Product datasheet

Anti-TGE antibody - C-terminal ab203229

1 Image

Overview

Product name	Anti-TGE antibody - C-terminal
Description	Rabbit polyclonal to TGE - C-terminal
Host species	Rabbit
Tested applications	Suitable for: IHC-P
Species reactivity	Reacts with: Mouse, Rat, Human
Immunogen	<p>Synthetic peptide within Human TGE aa 660-692 conjugated to keyhole limpet haemocyanin. The exact sequence is proprietary.</p> <p>Sequence:</p> <p>DILPSRSGTKQLLADFSCNKFPAIKAMLSIDVA</p> <p>Database link: Q08188</p> <p style="text-align: right;">  Run BLAST with  Run BLAST with </p>

General notes

Protein previously labeled as Transglutaminase 3.

Reproducibility is key to advancing scientific discovery and accelerating scientists' next breakthrough.

Abcam is leading the way with our range of recombinant antibodies, knockout-validated antibodies and knockout cell lines, all of which support improved reproducibility.

We are also planning to innovate the way in which we present recommended applications and species on our product datasheets, so that only applications & species that have been tested in our own labs, our suppliers or by selected trusted collaborators are covered by our Abpromise™ guarantee.

In preparation for this, we have started to update the applications & species that this product is Abpromise guaranteed for.

We are also updating the applications & species that this product has been “predicted to work with,” however this information is not covered by our Abpromise guarantee.

Applications & species from publications and Abreviews that have not been tested in our own labs or in those of our suppliers are not covered by the Abpromise guarantee.

Please check that this product meets your needs before purchasing. If you have any questions, special requirements or concerns, please send us an inquiry and/or contact our Support team ahead of purchase. Recommended alternatives for this product can be found below, as well as customer reviews and Q&As.

Properties

Form	Liquid
Storage instructions	Shipped at 4°C. Store at +4°C short term (1-2 weeks). Upon delivery aliquot. Store at -20°C long term. Avoid freeze / thaw cycle.
Storage buffer	Preservative: 0.09% Sodium azide Constituents: 0.01% BSA, 50% Glycerol Aqueous buffered solution.
Purity	Protein A purified
Clonality	Polyclonal
Isotype	IgG

Applications

Our [Abpromise guarantee](#) covers the use of **ab203229** in the following tested applications.

The application notes include recommended starting dilutions; optimal dilutions/concentrations should be determined by the end user.

Application	Abreviews	Notes
IHC-P		1/100 - 1/500. (or 1/50 – 1/200 using a fluorescent secondary antibody).

Target

Function

Catalyzes the calcium-dependent formation of isopeptide cross-links between glutamine and lysine residues in various proteins, as well as the conjugation of polyamines to proteins. Involved in the formation of the cornified envelope (CE), a specialized component consisting of covalent cross-links of proteins beneath the plasma membrane of terminally differentiated keratinocytes. Catalyzes small proline-rich proteins (SPRR1 and SPRR2) and LOR cross-linking to form small interchain oligomers, which are further cross-linked by TGM1 onto the growing CE scaffold (By similarity). In hair follicles, involved in cross-linking structural proteins to hardening the inner root sheath.

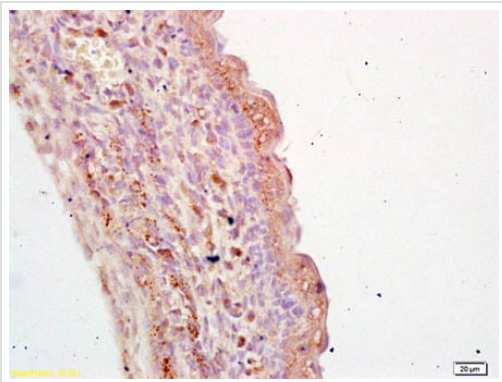
Sequence similarities

Belongs to the transglutaminase superfamily. Transglutaminase family.

Post-translational modifications

Activated by proteolytic processing. In vitro activation is commonly achieved by cleavage with dispase, a neutral bacterial protease. Dispase cleavage site was proposed to lie between Ser-470 and Ser-471 (PubMed:8099584) or between Pro-465 and Phe-466 (PubMed:16565075). Physiological activation may be catalyzed by CTSL and, to a lesser extent, by CTSS, but not by CTSB, CTSD nor CTSV (PubMed:16565075).

Images



Immunohistochemical analysis of formalin-fixed, paraffin-embedded Mouse embryo tissue labeling TGE with ab203229 at 1/200 dilution followed by conjugation to the secondary antibody and DAB staining.

Immunohistochemistry (Formalin/PFA-fixed paraffin-embedded sections) - Anti-TGE antibody - C-terminal (ab203229)

Please note: All products are "FOR RESEARCH USE ONLY. NOT FOR USE IN DIAGNOSTIC PROCEDURES"

Our Abpromise to you: Quality guaranteed and expert technical support

- Replacement or refund for products not performing as stated on the datasheet
- Valid for 12 months from date of delivery
- Response to your inquiry within 24 hours

- We provide support in Chinese, English, French, German, Japanese and Spanish
- Extensive multi-media technical resources to help you
- We investigate all quality concerns to ensure our products perform to the highest standards

If the product does not perform as described on this datasheet, we will offer a refund or replacement. For full details of the Abpromise, please visit <https://www.abcam.com/abpromise> or contact our technical team.

Terms and conditions

- Guarantee only valid for products bought direct from Abcam or one of our authorized distributors