


Product datasheet

# Anti-Thimet Oligopeptidase antibody ab228910

2 Images

Overview

---

|                            |   |
|----------------------------|---|
| <b>Product name</b>        | Anti-Thimet Oligopeptidase antibody   |
| <b>Description</b>         | Rabbit polyclonal to Thimet Oligopeptidase  |
| <b>Host species</b>        | Rabbit  |
| <b>Tested applications</b> | <b>Suitable for:</b> WB   |
| <b>Species reactivity</b>  | <b>Reacts with:</b> Mouse, Human<br><b>Predicted to work with:</b> Rat, Pig    |
| <b>Immunogen</b>           | Recombinant fragment within Human Thimet Oligopeptidase (internal sequence). The exact sequence is proprietary.<br>Database link: <a href="#">P52888</a>  |
| <b>Positive control</b>    | WB: Mouse brain lysate; A549 and HCT 116 whole cell lysates.  |
| <b>General notes</b>       | <p>Reproducibility is key to advancing scientific discovery and accelerating scientists' next breakthrough.</p> <p>Abcam is leading the way with our range of recombinant antibodies, knockout-validated antibodies and knockout cell lines, all of which support improved reproducibility.</p> <p>We are also planning to innovate the way in which we present recommended applications and species on our product datasheets, so that only applications &amp; species that have been tested in our own labs, our suppliers or by selected trusted collaborators are covered by our Abpromise™ guarantee.</p> <p>In preparation for this, we have started to update the applications &amp; species that this product is Abpromise guaranteed for.</p> <p>We are also updating the applications &amp; species that this product has been “predicted to work with,” however this information is not covered by our Abpromise guarantee.</p> <p>Applications &amp; species from publications and Abreviews that have not been tested in our own labs or in those of our suppliers are not covered by the Abpromise guarantee.</p> <p>Please check that this product meets your needs before purchasing. If you have any questions, special requirements or concerns, please send us an inquiry and/or contact our Support team ahead of purchase. Recommended alternatives for this product can be found below, as well as customer reviews and Q&amp;As.</p> |

Properties

---

|                             |   |
|-----------------------------|---|
| <b>Form</b>                 | Liquid  |
| <b>Storage instructions</b> | Shipped at 4°C. Store at +4°C short term (1-2 weeks). Upon delivery aliquot. Store at -20°C long term. Avoid freeze / thaw cycle.       |
| <b>Storage buffer</b>       | pH: 7.00<br>Preservative: 0.01% Thimerosal (merthiolate)<br>Constituents: 1.21% Tris, 0.75% Glycine, 20% Glycerol (glycerin, glycerine) |
| <b>Purity</b>               | Immunogen affinity purified   |
| <b>Clonality</b>            | Polyclonal  |
| <b>Isotype</b>              | IgG   |

## Applications

Our [Abpromise guarantee](#) covers the use of **ab228910** in the following tested applications.

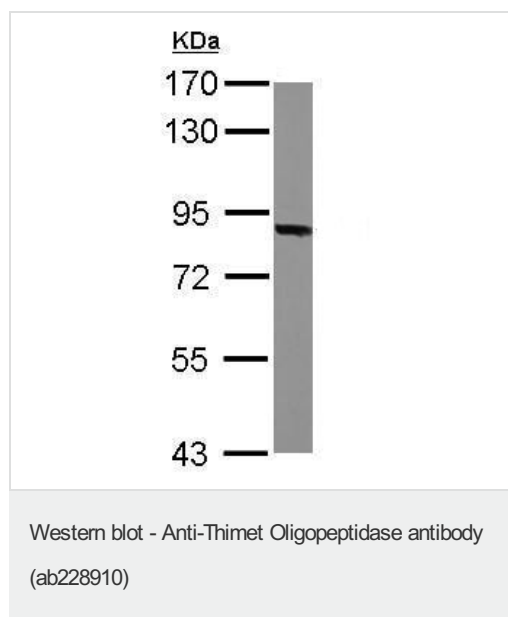
The application notes include recommended starting dilutions; optimal dilutions/concentrations should be determined by the end user.

| Application | Abreviews | Notes   |
|-------------|-----------|---|
| WB          |           | 1/500 - 1/3000. Predicted molecular weight: 79 kDa. |

## Target

|                              |  |
|------------------------------|--|
| <b>Function</b>              | Involved in the metabolism of neuropeptides under 20 amino acid residues long. Involved in cytoplasmic peptide degradation. Able to degrade the beta-amyloid precursor protein and generate amyloidogenic fragments. |
| <b>Sequence similarities</b> | Belongs to the peptidase M3 family.  |
| <b>Cellular localization</b> | Cytoplasm.   |

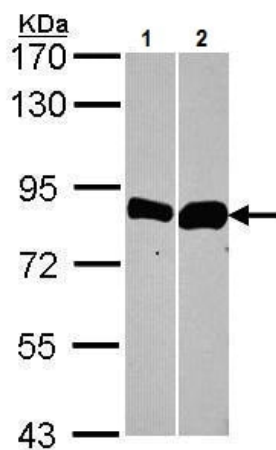
## Images



Anti-Thimet Oligopeptidase antibody (ab228910) at 1/500 dilution +  
Mouse brain lysate at 50 µg

**Predicted band size:** 79 kDa

7.5% SDS-PAGE gel.



Western blot - Anti-Thimet Oligopeptidase antibody (ab228910)

**All lanes** : Anti-Thimet Oligopeptidase antibody (ab228910) at 1/1000 dilution

**Lane 1** : A549 (human lung carcinoma cell line) whole cell lysate

**Lane 2** : HCT 116 (human colorectal carcinoma cell line) whole cell lysate

Lysates/proteins at 30 µg per lane.

**Predicted band size:** 79 kDa

7.5% SDS-PAGE gel.

**Please note:** All products are "FOR RESEARCH USE ONLY. NOT FOR USE IN DIAGNOSTIC PROCEDURES"

### Our Abpromise to you: Quality guaranteed and expert technical support

- Replacement or refund for products not performing as stated on the datasheet
- Valid for 12 months from date of delivery
- Response to your inquiry within 24 hours
- We provide support in Chinese, English, French, German, Japanese and Spanish
- Extensive multi-media technical resources to help you
- We investigate all quality concerns to ensure our products perform to the highest standards

If the product does not perform as described on this datasheet, we will offer a refund or replacement. For full details of the Abpromise, please visit <https://www.abcam.com/abpromise> or contact our technical team.

### Terms and conditions

- Guarantee only valid for products bought direct from Abcam or one of our authorized distributors