

Product datasheet

Anti-THOC5 antibody [EP6904] ab137051

RabMAb

[2 Images](#)

Overview

Product name	Anti-THOC5 antibody [EP6904]
Description	Rabbit monoclonal [EP6904] to THOC5
Host species	Rabbit
Tested applications	Suitable for: WB, Flow Cyt Unsuitable for: IHC-P or IP
Species reactivity	Reacts with: Mouse, Rat, Human
Immunogen	Synthetic peptide, corresponding to amino acids in Human THOC5 (UniProt ID: Q13769).
Positive control	293T and HeLa cell lysates; 293T cells.
General notes	<p>Our RabMAb[®] technology is a patented hybridoma-based technology for making rabbit monoclonal antibodies. For details on our patents, please refer to RabMAb[®] patents.</p> <p>Reproducibility is key to advancing scientific discovery and accelerating scientists' next breakthrough.</p> <p>Abcam is leading the way with our range of recombinant antibodies, knockout-validated antibodies and knockout cell lines, all of which support improved reproducibility.</p> <p>We are also planning to innovate the way in which we present recommended applications and species on our product datasheets, so that only applications & species that have been tested in our own labs, our suppliers or by selected trusted collaborators are covered by our Abpromise[™] guarantee.</p> <p>In preparation for this, we have started to update the applications & species that this product is Abpromise guaranteed for.</p> <p>We are also updating the applications & species that this product has been "predicted to work with," however this information is not covered by our Abpromise guarantee.</p> <p>Applications & species from publications and Abreviews that have not been tested in our own labs or in those of our suppliers are not covered by the Abpromise guarantee.</p> <p>Please check that this product meets your needs before purchasing. If you have any questions, special requirements or concerns, please send us an inquiry and/or contact our Support team ahead of purchase. Recommended alternatives for this product can be found below, as well as customer reviews and Q&As.</p>

Properties

Form	Liquid
Storage instructions	Shipped at 4°C. Store at -20°C.
Storage buffer	pH: 7.2 Preservative: 0.01% Sodium azide Constituents: 9% PBS, 40% Glycerol (glycerin, glycerine), 0.05% BSA, 50% Tissue culture supernatant
Purity	Tissue culture supernatant
Clonality	Monoclonal
Clone number	EP6904
Isotype	IgG

Applications

Our [Abpromise guarantee](#) covers the use of **ab137051** in the following tested applications.

The application notes include recommended starting dilutions; optimal dilutions/concentrations should be determined by the end user.

Application	Abreviews	Notes
WB		1/1000 - 1/10000. Predicted molecular weight: 79 kDa.
Flow Cyt		1/10 - 1/100. ab172730 - Rabbit monoclonal IgG, is suitable for use as an isotype control with this antibody.

Application notes Is unsuitable for IHC-P or IP.

Target

Function Component the THO subcomplex of the TREX complex. The TREX complex specifically associates with spliced mRNA and not with unspliced pre-mRNA. It is recruited to spliced mRNAs by a transcription-independent mechanism. Binds to mRNA upstream of the exon-junction complex (EJC) and is recruited in a splicing- and cap-dependent manner to a region near the 5' end of the mRNA where it functions in mRNA export. The recruitment occurs via an interaction between ALYREF/THOC4 and the cap-binding protein NCBP1. The TREX complex is essential for the export of Kaposi's sarcoma-associated herpesvirus (KSHV) intronless mRNAs and infectious virus production. The recruitment of the TREX complex to the intronless viral mRNA occurs via an interaction between KSHV ORF57 protein and ALYREF/THOC4. DDX39B functions as a bridge between ALYREF/THOC4 and the THO complex. THOC5 in conjunction with ALYREF/THOC4 functions in NXF1-NXT1 mediated nuclear export of HSP70 mRNA. Regulates the expression of myeloid transcription factors CEBPA, CEBPB and GAB2 by enhancing the levels of phosphatidylinositol 3,4,5-trisphosphate. May be involved in the differentiation of granulocytes and adipocytes. Essential for hematopoietic primitive cell survival and plays an integral role in monocytic development.

Tissue specificity Ubiquitously expressed.

Sequence similarities Belongs to the THOC5 family.

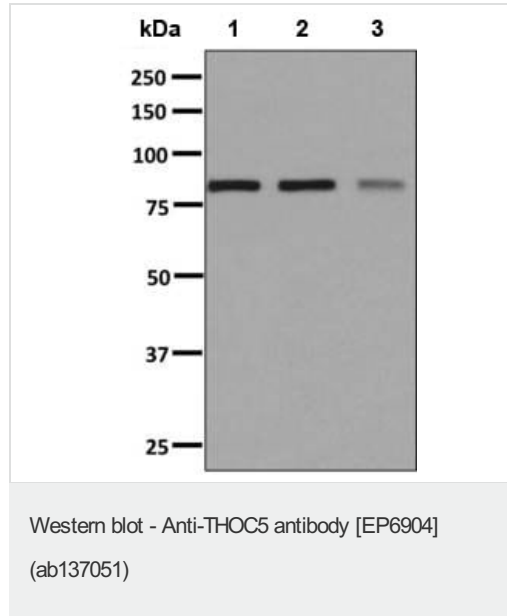
Post-translational Phosphorylated on tyrosine upon binding to activated CSF1R; which causes a dissociation of the

modifications

two proteins. Phosphorylation on Ser-5 and/or Ser-6 is required for nuclear export. Phosphorylated on Thr-328 in insulin-stimulated adipocytes (By similarity). Phosphorylated upon DNA damage, probably by ATM or ATR.

Cellular localization

Nucleus. Cytoplasm. Shuttles between nucleus and cytoplasm.

Images

All lanes : Anti-THOC5 antibody [EP6904] (ab137051) at 1/1000 dilution

Lane 1 : 293T cell lysate

Lane 2 : HeLa cell lysate

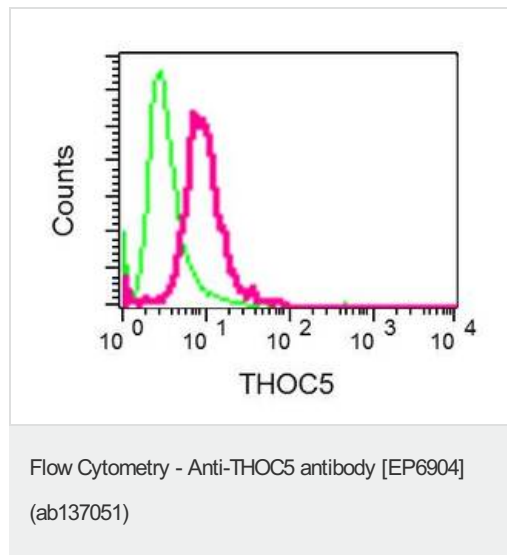
Lane 3 : PC-12

Lysates/proteins at 10 µg per lane.

Secondary

Lanes 1-2 : HRP labelled Goat anti-Rabbit IgG at 1/2000 dilution

Predicted band size: 79 kDa



Flow cytometric analysis of permeabilized 293T cells labelling THOC5 with ab137051 at dilution 1/10 (red) or a Rabbit IgG negative control (green).

Please note: All products are "FOR RESEARCH USE ONLY. NOT FOR USE IN DIAGNOSTIC PROCEDURES"

Our Abpromise to you: Quality guaranteed and expert technical support

- Replacement or refund for products not performing as stated on the datasheet
- Valid for 12 months from date of delivery
- Response to your inquiry within 24 hours

- We provide support in Chinese, English, French, German, Japanese and Spanish
- Extensive multi-media technical resources to help you
- We investigate all quality concerns to ensure our products perform to the highest standards

If the product does not perform as described on this datasheet, we will offer a refund or replacement. For full details of the Abpromise, please visit <https://www.abcam.com/abpromise> or contact our technical team.

Terms and conditions

- Guarantee only valid for products bought direct from Abcam or one of our authorized distributors