

Product datasheet

Anti-Thrombin antibody ab92621

★★★★★ 5 Abreviews 10 References 1 Image

Overview

Product name	Anti-Thrombin antibody
Description	Rabbit polyclonal to Thrombin
Host species	Rabbit
Tested applications	Suitable for: WB
Species reactivity	Reacts with: Mouse, Rat, Human Predicted to work with: Sheep, Rabbit, Pig, Macaque monkey, Orangutan
Immunogen	Synthetic peptide corresponding to Human Thrombin aa 400-500 conjugated to keyhole limpet haemocyanin. (Peptide available as ab102604)
Positive control	This antibody gave a positive signal in the following lysates: Human Liver Tissue; Mouse Liver Tissue; Rat Liver Tissue; Human Plasma Total Protein; Mouse Plasma
General notes	The Life Science industry has been in the grips of a reproducibility crisis for a number of years. Abcam is leading the way in addressing this with our range of recombinant monoclonal antibodies and knockout edited cell lines for gold-standard validation. Please check that this product meets your needs before purchasing. If you have any questions, special requirements or concerns, please send us an inquiry and/or contact our Support team ahead of purchase. Recommended alternatives for this product can be found below, along with publications, customer reviews and Q&As

Properties

Form	Liquid
Storage instructions	Shipped at 4°C. Store at +4°C short term (1-2 weeks). Upon delivery aliquot. Store at -20°C or -80°C. Avoid freeze / thaw cycle.
Storage buffer	pH: 7.40 Preservative: 0.02% Sodium azide Constituent: PBS

Batches of this product that have a concentration < 1mg/ml may have BSA added as a stabilising agent. If you would like information about the formulation of a specific lot, please contact our scientific support team who will be happy to help.

Purity	Immunogen affinity purified
Clonality	Polyclonal
Isotype	IgG

Applications

The Abpromise guarantee Our [Abpromise guarantee](#) covers the use of ab92621 in the following tested applications.

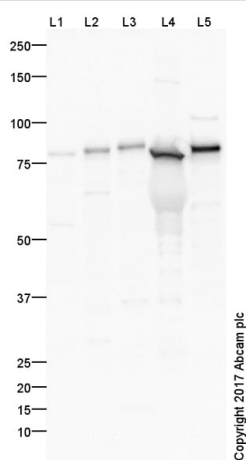
The application notes include recommended starting dilutions; optimal dilutions/concentrations should be determined by the end user.

Application	Abreviews	Notes
WB	★★★★☆ (4)	Use a concentration of 1 µg/ml. Detects a band of approximately 78 kDa (predicted molecular weight: 70 kDa).

Target

Function	Thrombin, which cleaves bonds after Arg and Lys, converts fibrinogen to fibrin and activates factors V, VII, VIII, XIII, and, in complex with thrombomodulin, protein C. Functions in blood homeostasis, inflammation and wound healing.
Tissue specificity	Expressed by the liver and secreted in plasma.
Involvement in disease	Factor II deficiency Ischemic stroke Thrombophilia due to thrombin defect Pregnancy loss, recurrent, 2
Sequence similarities	Belongs to the peptidase S1 family. Contains 1 Gla (gamma-carboxy-glutamate) domain. Contains 2 kringle domains. Contains 1 peptidase S1 domain.
Post-translational modifications	The gamma-carboxyglutamyl residues, which bind calcium ions, result from the carboxylation of glutamyl residues by a microsomal enzyme, the vitamin K-dependent carboxylase. The modified residues are necessary for the calcium-dependent interaction with a negatively charged phospholipid surface, which is essential for the conversion of prothrombin to thrombin. N-glycosylated. N-glycan heterogeneity at Asn-121: Hex3HexNAc3 (minor), Hex4HexNAc3 (minor) and Hex5HexNAc4 (major). At Asn-143: Hex4HexNAc3 (minor) and Hex5HexNAc4 (major).
Cellular localization	Secreted, extracellular space.

Images



Western blot - Anti-Thrombin antibody (ab92621)

All lanes : Anti-Thrombin antibody (ab92621) at 1 µg/ml

Lane 1 : Liver (Human) Tissue Lysate

Lane 2 : Liver (Mouse) Tissue Lysate

Lane 3 : Liver (Rat) Tissue Lysate

Lane 4 : Plasma (Human) Total Protein Lysate

Lane 5 : Plasma (Mouse) Total Protein Lysate

Lysates/proteins at 10 µg per lane.

Secondary

All lanes : Goat Anti-Rabbit IgG H&L (HRP) at 1/50000 dilution

Developed using the ECL technique.

Performed under reducing conditions.

Predicted band size: 70 kDa

Observed band size: 78 kDa

Additional bands at: 100 kDa, 60 kDa. We are unsure as to the identity of these extra bands.

Exposure time: 5 seconds

This blot was produced using a 4-12% Bis-tris gel under the MOPS buffer system. The gel was run at 200V for 50 minutes before being transferred onto a Nitrocellulose membrane at 30V for 70 minutes. The membrane was then blocked for an hour using 2% Bovine Serum Albumin before being incubated with ab92621 overnight at 4°C. Antibody binding was detected using an anti-rabbit antibody conjugated to HRP, and visualised using ECL development solution [ab133406](#).

Please note: All products are "FOR RESEARCH USE ONLY. NOT FOR USE IN DIAGNOSTIC PROCEDURES"

Our Abpromise to you: Quality guaranteed and expert technical support

- Replacement or refund for products not performing as stated on the datasheet
- Valid for 12 months from date of delivery
- Response to your inquiry within 24 hours

- We provide support in Chinese, English, French, German, Japanese and Spanish
- Extensive multi-media technical resources to help you
- We investigate all quality concerns to ensure our products perform to the highest standards

If the product does not perform as described on this datasheet, we will offer a refund or replacement. For full details of the Abpromise, please visit <https://www.abcam.com/abpromise> or contact our technical team.

Terms and conditions

- Guarantee only valid for products bought direct from Abcam or one of our authorized distributors