


Product datasheet

Anti-Thymidine Kinase 1/TK1 antibody ab75277

2 Images

Overview

| | |
|----------------------------|--|
| Product name | Anti-Thymidine Kinase 1/TK1 antibody |
| Description | Rabbit polyclonal to Thymidine Kinase 1/TK1 |
| Host species | Rabbit |
| Tested applications | Suitable for: WB, IP |
| Species reactivity | Reacts with: Human Predicted to work with: Chimpanzee, Rhesus monkey, Orangutan  |
| Immunogen | Synthetic peptide corresponding to Human Thymidine Kinase 1/TK1. Database link: NP_003249.1 |
| Positive control | HeLa and 293T whole cell lysates. |
| General notes | This product was previously labelled as Thymidine Kinase 1 |

Properties

| | |
|-----------------------------|---|
| Form | Liquid |
| Storage instructions | Shipped at 4°C. Upon delivery aliquot and store at -20°C. Avoid freeze / thaw cycles. |
| Storage buffer | Preservative: 0.09% Sodium azide Constituents: 1.815% Tris, 1.764% Sodium citrate, 0.021% PBS |
| Purity | Immunogen affinity purified |
| Purification notes | ab75277 was affinity purified using an epitope specific to Thymidine Kinase immobilized on solid support. |
| Clonality | Polyclonal |
| Isotype | IgG |

Applications

Our [Abpromise guarantee](#) covers the use of **ab75277** in the following tested applications.

The application notes include recommended starting dilutions; optimal dilutions/concentrations should be determined by the end user.

| Application | Abreviews | Notes |
|-------------|-----------|--|
| WB | | 1/2000 - 1/10000. Detects a band of approximately 25 kDa (predicted molecular weight: 25 kDa). |
| IP | | Use at 2-5 µg/mg of lysate. |

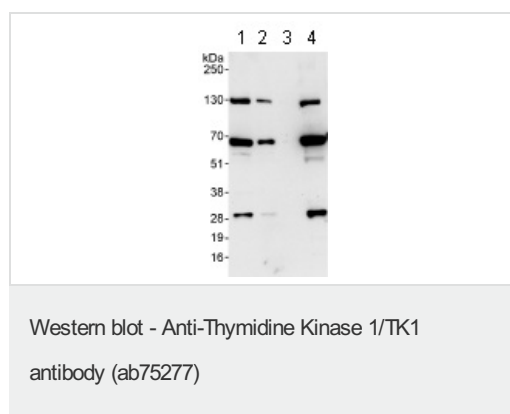
Target

Sequence similarities Belongs to the thymidine kinase family.

Post-translational modifications Phosphorylated on Ser-13 in mitosis.

Cellular localization Cytoplasm.

Images



All lanes : Anti-Thymidine Kinase 1/TK1 antibody (ab75277) at 0.1 µg/ml

Lane 1 : HeLa whole cell lysate at 50 µg

Lane 2 : HeLa whole cell lysate at 15 µg

Lane 3 : HeLa whole cell lysate at 5 µg

Lane 4 : 293T whole cell lysate at 50 µg

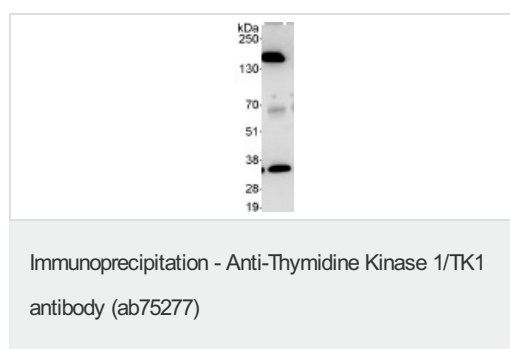
Developed using the ECL technique.

Predicted band size: 25 kDa

Observed band size: 25 kDa

Additional bands at: 130 kDa, 65 kDa. We are unsure as to the identity of these extra bands.

Exposure time: 30 seconds



Detection of Thymidine Kinase by Western Blot of Immunoprecipitate.

ab75277 at 1 µg/ml staining Thymidine Kinase in HeLa whole cell lysate immunoprecipitated using ab75277 at 3 µg/mg lysate (1 mg/IP; 20% of IP loaded/lane).

Detection: Chemiluminescence with exposure time of 30 seconds.

Our Abpromise to you: Quality guaranteed and expert technical support

- Replacement or refund for products not performing as stated on the datasheet
- Valid for 12 months from date of delivery
- Response to your inquiry within 24 hours

- We provide support in Chinese, English, French, German, Japanese and Spanish
- Extensive multi-media technical resources to help you
- We investigate all quality concerns to ensure our products perform to the highest standards

If the product does not perform as described on this datasheet, we will offer a refund or replacement. For full details of the Abpromise, please visit <https://www.abcam.com/abpromise> or contact our technical team.

Terms and conditions

- Guarantee only valid for products bought direct from Abcam or one of our authorized distributors