

Product datasheet

Anti-Thymidylate Synthase antibody ab7398

7 References 1 Image

Overview

Product name	Anti-Thymidylate Synthase antibody
Description	Sheep polyclonal to Thymidylate Synthase
Host species	Sheep
Tested applications	Suitable for: WB
Species reactivity	Reacts with: Human Does not react with: Saccharomyces cerevisiae
Immunogen	Recombinant full length protein corresponding to Human Thymidylate Synthase. Produced in E.coli. Database link: P04818
General notes	<p>The antibody recognizes the expected additional band corresponding to the ternary complex of human TS-dFUMP-reduced folate in HeLa cells treated with the TS inhibitor 5-FUdR. This event occurs in most human breast, colorectal, gastric, head and neck carcinomas. The antibody recognizes 36 kDa human TS.</p> <p>The Life Science industry has been in the grips of a reproducibility crisis for a number of years. Abcam is leading the way in addressing this with our range of recombinant monoclonal antibodies and knockout edited cell lines for gold-standard validation. Please check that this product meets your needs before purchasing.</p> <p>If you have any questions, special requirements or concerns, please send us an inquiry and/or contact our Support team ahead of purchase. Recommended alternatives for this product can be found below, along with publications, customer reviews and Q&As</p>

Properties

Form	Liquid
Storage instructions	Shipped at 4°C. Store at +4°C short term (1-2 weeks). Upon delivery aliquot. Store at -20°C or -80°C. Avoid freeze / thaw cycle.
Storage buffer	Preservative: 0.01% Sodium azide Constituents: 0.42% Potassium phosphate, 0.87% Sodium chloride
Purity	IgG fraction
Clonality	Polyclonal
Isotype	IgG

Applications

The Abpromise guarantee

Our [Abpromise guarantee](#) covers the use of ab7398 in the following tested applications.

The application notes include recommended starting dilutions; optimal dilutions/concentrations should be determined by the end user.

Application	Abreviews	Notes
WB		Use at an assay dependent concentration. Predicted molecular weight: 37 kDa.

Target

Function

Contributes to the de novo mitochondrial thymidylate biosynthesis pathway.

Pathway

Pyrimidine metabolism; dTTP biosynthesis.

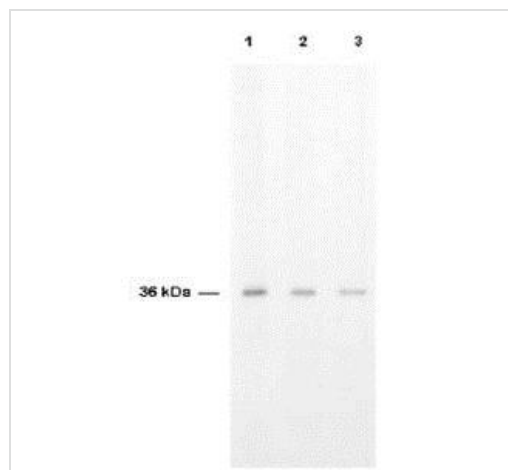
Sequence similarities

Belongs to the thymidylate synthase family.

Cellular localization

Nucleus. Cytoplasm. Mitochondrion. Mitochondrion matrix. Mitochondrion inner membrane.

Images



Western blot - Anti-Thymidylate Synthase antibody (ab7398)

ab7398 is shown to detect thymidylate synthase present in a HeLa cell extract. Each lane is estimated to contain 4 µg of protein. Lanes 1, 2 and 3 represent 1/2000, 1/5000 and 1/10000 fold dilutions of the antibody. Detection was made using HRP Rabbit-a-Sheep IgG diluted 1/1000 and color development using TMB substrate for approximately 4'.

Please note: All products are "FOR RESEARCH USE ONLY. NOT FOR USE IN DIAGNOSTIC PROCEDURES"

Our Abpromise to you: Quality guaranteed and expert technical support

- Replacement or refund for products not performing as stated on the datasheet
- Valid for 12 months from date of delivery
- Response to your inquiry within 24 hours
- We provide support in Chinese, English, French, German, Japanese and Spanish
- Extensive multi-media technical resources to help you

- We investigate all quality concerns to ensure our products perform to the highest standards

If the product does not perform as described on this datasheet, we will offer a refund or replacement. For full details of the Abpromise, please visit <https://www.abcam.com/abpromise> or contact our technical team.

Terms and conditions

- Guarantee only valid for products bought direct from Abcam or one of our authorized distributors