

Product datasheet

Anti-Thymosin beta 4 antibody ab14335

★★★★★ 2 Abreviews 4 References 2 Images

Overview

| | |
|----------------------------|--|
| Product name | Anti-Thymosin beta 4 antibody |
| Description | Rabbit polyclonal to Thymosin beta 4 |
| Host species | Rabbit |
| Specificity | Human Thymosin B4 (aa 1-11) |
| Tested applications | Suitable for: IHC-P |
| Species reactivity | Reacts with: Human |
| Immunogen | Synthetic peptide corresponding to Human Thymosin beta 4 aa 1-11 conjugated to keyhole limpet haemocyanin. Sequence: SDKPDMAEIEK |

Database link: [P62328](#)

 [Run BLAST with](#)

 [Run BLAST with](#)

General notes

The Life Science industry has been in the grips of a reproducibility crisis for a number of years. Abcam is leading the way in addressing this with our range of recombinant monoclonal antibodies and knockout edited cell lines for gold-standard validation. Please check that this product meets your needs before purchasing.

If you have any questions, special requirements or concerns, please send us an inquiry and/or contact our Support team ahead of purchase. Recommended alternatives for this product can be found below, along with publications, customer reviews and Q&As

Properties

| | |
|-----------------------------|--|
| Form | Liquid |
| Storage instructions | Shipped at 4°C. Upon delivery aliquot and store at -20°C. Avoid repeated freeze / thaw cycles. |
| Purity | Whole antiserum |
| Clonality | Polyclonal |
| Isotype | IgG |

Applications

The Abpromise guarantee

Our [Abpromise guarantee](#) covers the use of ab14335 in the following tested applications.

The application notes include recommended starting dilutions; optimal dilutions/concentrations should be determined by the end user.

| Application | Abreviews | Notes |
|-------------|-----------|---|
| IHC-P | | 1/100 - 1/1000. Tested in lung and heart tissues. |

Target

Function

Plays an important role in the organization of the cytoskeleton (By similarity). Binds to and sequesters actin monomers (G actin) and therefore inhibits actin polymerization. Seraspenide inhibits the entry of hematopoietic pluripotent stem cells into the S-phase.

Tissue specificity

Expressed in several hemopoietic cell lines and lymphoid malignant cells. Decreased levels in myeloma cells.

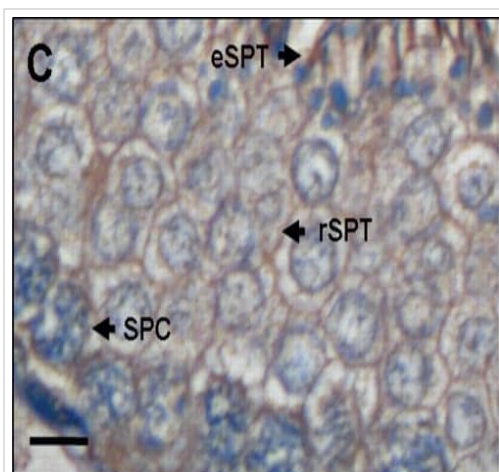
Sequence similarities

Belongs to the thymosin beta family.

Cellular localization

Cytoplasm > cytoskeleton.

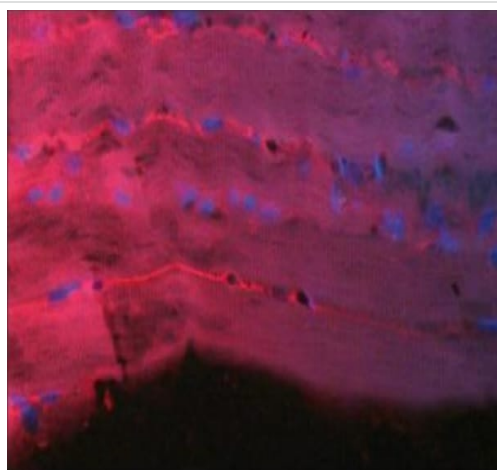
Images



Immunohistochemical analysis of adult rat testis tissue, staining Thymosin beta 10 with ab14335 at 1/1000 dilution.

Immunohistochemistry (Formalin/PFA-fixed paraffin-embedded sections) - Anti-Thymosin beta 4 antibody (ab14335)

Image from Lagarrigue Met al., Mol Cell Proteomics, 10, M110.005991. Fig 6.; doi: 10.1074/mcp.M110.005991.



Immunohistochemistry (Formalin/PFA-fixed paraffin-embedded sections) - Anti-Thymosin beta 4 antibody (ab14335)

Immunohistochemistry (Formalin/PFA-fixed paraffin-embedded sections) analysis of human heart tissue sections labeling Thymosin beta 4 with ab14335 at 1/100 dilution, followed by an appropriate secondary antibody conjugated to Cy3. The nuclei were stained with DAPI.

Please note: All products are "FOR RESEARCH USE ONLY. NOT FOR USE IN DIAGNOSTIC PROCEDURES"

Our Abpromise to you: Quality guaranteed and expert technical support

- Replacement or refund for products not performing as stated on the datasheet
- Valid for 12 months from date of delivery
- Response to your inquiry within 24 hours
- We provide support in Chinese, English, French, German, Japanese and Spanish
- Extensive multi-media technical resources to help you
- We investigate all quality concerns to ensure our products perform to the highest standards

If the product does not perform as described on this datasheet, we will offer a refund or replacement. For full details of the Abpromise, please visit <https://www.abcam.com/abpromise> or contact our technical team.

Terms and conditions

- Guarantee only valid for products bought direct from Abcam or one of our authorized distributors