


Product datasheet

Anti-TIAL1 antibody ab129499

1 References 2 Images

Overview

Product name	Anti-TIAL1 antibody
Description	Rabbit polyclonal to TIAL1
Host species	Rabbit
Tested applications	Suitable for: WB, IP
Species reactivity	Reacts with: Human Predicted to work with: Mouse, Rabbit, Horse, Chicken, Guinea pig, Cow, Dog, Turkey, Pig, Chimpanzee, Rhesus monkey, Gorilla, Orangutan, Platypus 
Immunogen	Synthetic peptide, corresponding to a region within amino acids 325-375 of Human TIAL1 (NP_003243.1).
Positive control	HeLa, 293T, and Jurkat whole cell lysates.

Properties

Form	Liquid
Storage instructions	Shipped at 4°C. Store at +4°C.
Storage buffer	Preservative: 0.09% Sodium azide Constituent: 99% Tris citrate/phosphate pH 7-8
Purity	Immunogen affinity purified
Clonality	Polyclonal
Isotype	IgG

Applications

Our [Abpromise guarantee](#) covers the use of **ab129499** in the following tested applications.

The application notes include recommended starting dilutions; optimal dilutions/concentrations should be determined by the end user.

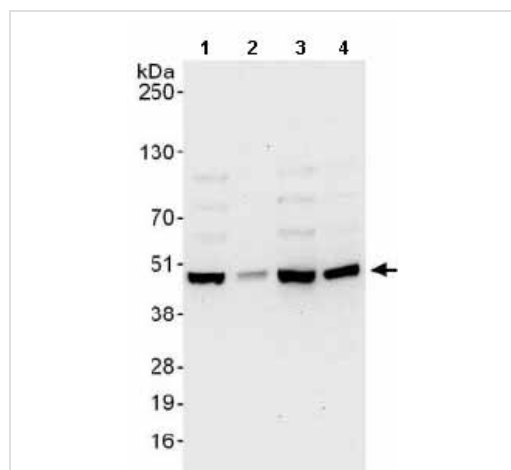
Application	Abreviews	Notes
WB		1/2000 - 1/10000. Predicted molecular weight: 41 kDa.

Application	Abreviews	Notes
IP		Use at 2-10 µg/mg of lysate.

Target

Function	RNA-binding protein. Possesses nucleolytic activity against cytotoxic lymphocyte target cells. May be involved in apoptosis.
Sequence similarities	Contains 3 RRM (RNA recognition motif) domains.
Post-translational modifications	Phosphorylated by MAPK14 following DNA damage, releasing TIAR from GADD45A mRNA.
Cellular localization	Cytoplasm. Nucleus. Cytoplasmic granule. The cytoplasmic granules are stress granules which are a dense aggregation in the cytosol composed of proteins and RNAs that appear when the cell is under stress. Colocalizes with NANOS3 in the stress granules (By similarity). Cytoplasmic granules of cytolytic T-lymphocytes.

Images



Western blot - Anti-TIAL1 antibody (ab129499)

All lanes : Anti-TIAL1 antibody (ab129499) at 0.1 µg/ml

Lane 1 : HeLa whole cell lysate at 50 µg

Lane 2 : HeLa whole cell lysate at 15 µg

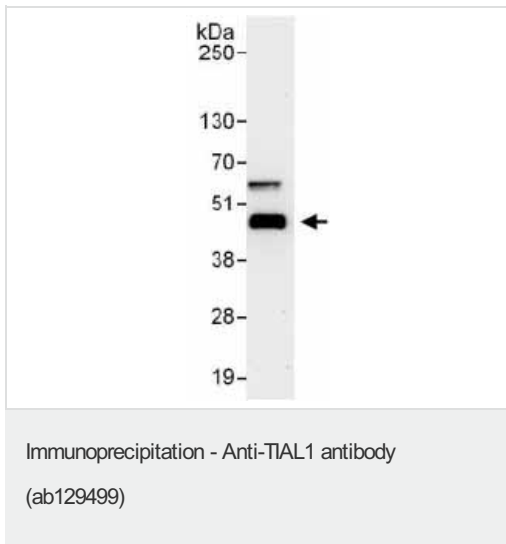
Lane 3 : 293T whole cell lysate at 50 µg

Lane 4 : Jurkat whole cell lysate at 50 µg

Developed using the ECL technique.

Predicted band size: 41 kDa

Exposure time: 30 seconds



Detection of TIAL1 in Immunoprecipitates of HeLa whole cell lysate (1 mg for IP, 20% of IP loaded) using ab129499 at 6 $\mu\text{g}/\text{mg}$ lysate for IP and at 1 $\mu\text{g}/\text{ml}$ for subsequent Western blot detection. Detection: Chemiluminescence with an exposure time of 30 seconds.

Please note: All products are "FOR RESEARCH USE ONLY. NOT FOR USE IN DIAGNOSTIC PROCEDURES"

Our Abpromise to you: Quality guaranteed and expert technical support

- Replacement or refund for products not performing as stated on the datasheet
- Valid for 12 months from date of delivery
- Response to your inquiry within 24 hours
- We provide support in Chinese, English, French, German, Japanese and Spanish
- Extensive multi-media technical resources to help you
- We investigate all quality concerns to ensure our products perform to the highest standards

If the product does not perform as described on this datasheet, we will offer a refund or replacement. For full details of the Abpromise, please visit <https://www.abcam.com/abpromise> or contact our technical team.

Terms and conditions

- Guarantee only valid for products bought direct from Abcam or one of our authorized distributors