

Product datasheet

Anti-TIAL1 antibody [EPR11323(B)] ab169547

KO VALIDATED Recombinant RabMAb

6 Images

Overview

Product name	Anti-TIAL1 antibody [EPR11323(B)]
Description	Rabbit monoclonal [EPR11323(B)] to TIAL1
Host species	Rabbit
Tested applications	Suitable for: WB, IHC-P, Flow Cyt Unsuitable for: ICC or IP
Species reactivity	Reacts with: Mouse, Rat, Human
Immunogen	Synthetic peptide corresponding to Human TIAL1.
Positive control	WB: HeLa, Jurkat and K562 cell lysates. IHC-P: Human breast and ovarian carcinoma tissues. Flow Cyt: K562 cells.
General notes	<p>This product is a recombinant monoclonal antibody, which offers several advantages including:</p> <ul style="list-style-type: none"> - High batch-to-batch consistency and reproducibility - Improved sensitivity and specificity - Long-term security of supply - Animal-free production <p>For more information see here.</p> <p>Our RabMAb[®] technology is a patented hybridoma-based technology for making rabbit monoclonal antibodies. For details on our patents, please refer to RabMAb[®] patents.</p> <p>Reproducibility is key to advancing scientific discovery and accelerating scientists' next breakthrough.</p> <p>Abcam is leading the way with our range of recombinant antibodies, knockout-validated antibodies and knockout cell lines, all of which support improved reproducibility.</p> <p>We are also planning to innovate the way in which we present recommended applications and species on our product datasheets, so that only applications & species that have been tested in our own labs, our suppliers or by selected trusted collaborators are covered by our Abpromise[™] guarantee.</p> <p>In preparation for this, we have started to update the applications & species that this product is Abpromise guaranteed for.</p> <p>We are also updating the applications & species that this product has been "predicted to work with," however this information is not covered by our Abpromise guarantee.</p> <p>Applications & species from publications and Abreviews that have not been tested in our own</p>

labs or in those of our suppliers are not covered by the Abpromise guarantee.

Please check that this product meets your needs before purchasing. If you have any questions, special requirements or concerns, please send us an inquiry and/or contact our Support team ahead of purchase. Recommended alternatives for this product can be found below, as well as customer reviews and Q&As.

Properties

Form	Liquid
Storage instructions	Shipped at 4°C. Store at +4°C short term (1-2 weeks). Upon delivery aliquot. Store at -20°C long term.
Storage buffer	pH: 7.2 Preservative: 0.01% Sodium azide Constituents: 9% PBS, 40% Glycerol (glycerin, glycerine), 0.05% BSA, 50% Tissue culture supernatant
Purity	Tissue culture supernatant
Clonality	Monoclonal
Clone number	EPR11323(B)
Isotype	IgG

Applications

Our [Abpromise guarantee](#) covers the use of **ab169547** in the following tested applications.

The application notes include recommended starting dilutions; optimal dilutions/concentrations should be determined by the end user.

Application	Abreviews	Notes
WB		1/1000 - 1/5000. Predicted molecular weight: 41 kDa.
IHC-P		1/50 - 1/100. Perform heat mediated antigen retrieval with citrate buffer pH 6 before commencing with IHC staining protocol.
Flow Cyt		1/100 - 1/500. ab172730 - Rabbit monoclonal IgG, is suitable for use as an isotype control with this antibody.

Application notes	Is unsuitable for ICC or IP.
--------------------------	------------------------------

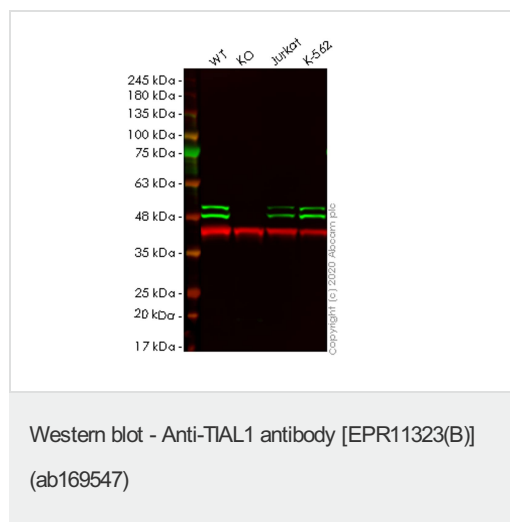
Target

Function	RNA-binding protein. Possesses nucleolytic activity against cytotoxic lymphocyte target cells. May be involved in apoptosis.
Sequence similarities	Contains 3 RRM (RNA recognition motif) domains.
Post-translational modifications	Phosphorylated by MAPK14 following DNA damage, releasing TIAR from GADD45A mRNA.

Cellular localization

Cytoplasm. Nucleus. Cytoplasmic granule. The cytoplasmic granules are stress granules which are a dense aggregation in the cytosol composed of proteins and RNAs that appear when the cell is under stress. Colocalizes with NANOS3 in the stress granules (By similarity). Cytoplasmic granules of cytolytic T-lymphocytes.

Images



All lanes : Anti-TIAL1 antibody [EPR11323(B)] (ab169547) at 1/1000 dilution

Lane 1 : Wild-type HeLa cell lysate

Lane 2 : TIAL1 knockout HeLa cell lysate

Lane 3 : Jurkat cell lysate

Lane 4 : K-562 cell lysate

Lysates/proteins at 20 µg per lane.

Secondary

All lanes : Goat anti-Rabbit IgG H&L (IRDye® 800CW) preadsorbed (ab216773) at 1/10000 dilution

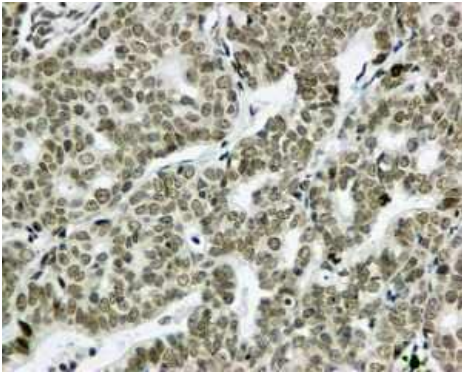
Predicted band size: 41 kDa

Observed band size: 49 kDa

[why is the actual band size different from the predicted?](#)

Lanes 1-4: Merged signal (red and green). Green - ab169547 observed at 49 kDa. Red - loading control [ab8245](#) observed at 36 kDa.

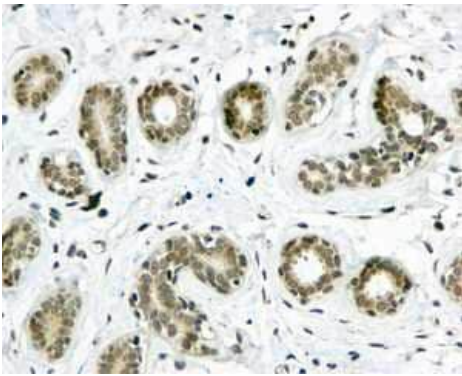
ab169547 Anti-TIAL1 antibody [EPR11323(B)] was shown to specifically react with TIAL1 in wild-type HeLa cells. Loss of signal was observed when knockout cell line [ab265793](#) (knockout cell lysate [ab257743](#)) was used. Wild-type and TIAL1 knockout samples were subjected to SDS-PAGE. ab169547 and Anti-GAPDH antibody [6C5] - Loading Control ([ab8245](#)) were incubated overnight at 4°C at 1 in 1000 dilution and 1 in 20000 dilution respectively. Blots were developed with Goat anti-Rabbit IgG H&L (IRDye® 800CW) preadsorbed ([ab216773](#)) and Goat anti-Mouse IgG H&L (IRDye® 680RD) preadsorbed ([ab216776](#)) secondary antibodies at 1 in 20000 dilution for 1 hour at room temperature before imaging.



Immunohistochemistry (Formalin/PFA-fixed paraffin-embedded sections) - Anti-TIAL1 antibody [EPR11323(B)] (ab169547)

Immunohistochemical analysis of paraffin-embedded Human ovarian carcinoma tissue labeling TIAL1 with ab169547 at 1/50 dilution.

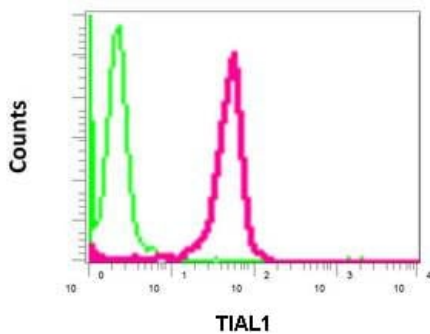
Perform heat mediated antigen retrieval with citrate buffer pH 6 before commencing with IHC staining protocol.



Immunohistochemistry (Formalin/PFA-fixed paraffin-embedded sections) - Anti-TIAL1 antibody [EPR11323(B)] (ab169547)

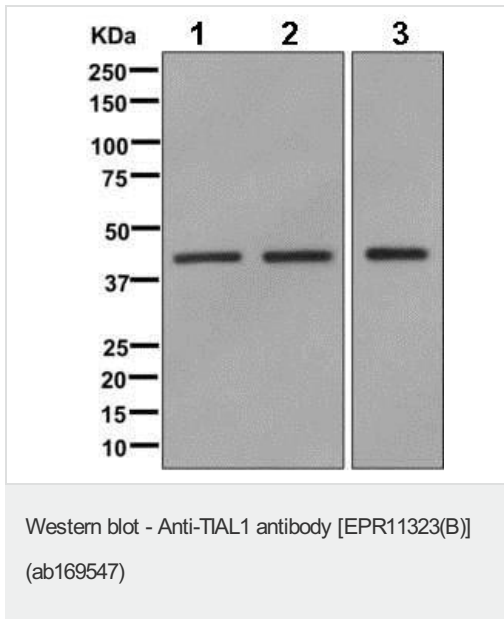
Immunohistochemical analysis of paraffin-embedded Human breast tissue labeling TIAL1 with ab169547 at 1/50 dilution.

Perform heat mediated antigen retrieval with citrate buffer pH 6 before commencing with IHC staining protocol.



Flow Cytometry - Anti-TIAL1 antibody [EPR11323(B)] (ab169547)

Flow cytometric analysis of permeabilized K562 cells labeling TIAL1 with ab169547 at 1/100 dilution (red) compared to a rabbit IgG negative control (green).



All lanes : Anti-TIAL1 antibody [EPR11323(B)] (ab169547) at 1/1000 dilution

Lane 1 : HeLa cell lysate

Lane 2 : Jurkat cell lysate

Lane 3 : K562 cell lysate





Lysates/proteins at 10 µg per lane.

Secondary

All lanes : HRP labeled goat anti-rabbit at 1/2000 dilution

Predicted band size: 41 kDa

Why choose a recombinant antibody?

 <p>Research with confidence Consistent and reproducible results</p>	 <p>Long-term and scalable supply Recombinant technology</p>
 <p>Success from the first experiment Confirmed specificity</p>	 <p>Ethical standards compliant Animal-free production</p>

Anti-TIAL1 antibody [EPR11323(B)] (ab169547)

Please note: All products are "FOR RESEARCH USE ONLY. NOT FOR USE IN DIAGNOSTIC PROCEDURES"

Our Abpromise to you: Quality guaranteed and expert technical support

- Replacement or refund for products not performing as stated on the datasheet
- Valid for 12 months from date of delivery
- Response to your inquiry within 24 hours
- We provide support in Chinese, English, French, German, Japanese and Spanish
- Extensive multi-media technical resources to help you
- We investigate all quality concerns to ensure our products perform to the highest standards

If the product does not perform as described on this datasheet, we will offer a refund or replacement. For full details of the Abpromise,

please visit <https://www.abcam.com/abpromise> or contact our technical team.

Terms and conditions

- Guarantee only valid for products bought direct from Abcam or one of our authorized distributors