



Product datasheet

Anti-TIE1 antibody [8D12B10] ab201977

4 Images

Overview

Product name	Anti-TIE1 antibody [8D12B10]
Description	Mouse monoclonal [8D12B10] to TIE1
Host species	Mouse
Tested applications	Suitable for: IHC-P, WB
Species reactivity	Reacts with: Human
Immunogen	<p>Recombinant fragment corresponding to Human TIE1 aa 385-607. Sequence:</p> <pre>IELRKP DGTVLLSTKAMEPEKTTAEFEV PRLVLADSGFWE CRVSTSGGQ DSRRFKVNVK VPPVPLAAPRLTKQSRQLVVSPLVSFSGDGPSTVRLHY RPQDSTMDWS TIVVDPSENV TLMNLRPKTGYSVRVQLSRPGEGGEGAWGPPTLMTTDC PEPLLQPWLEGW HVEGTDRLRV SWSLPLVPGPLVGDGFLRLWDGTRGQERRENVSSPQA RTALL</pre> <p>Database link: P35590</p> <p style="text-align: right;">  Run BLAST with  Run BLAST with </p>
Positive control	TIE1 transfected HEK293 cell lysate. HepG2 cell lysate. Human liver cancer tissue.
General notes	<p>Reproducibility is key to advancing scientific discovery and accelerating scientists' next breakthrough.</p> <p>Abcam is leading the way with our range of recombinant antibodies, knockout-validated antibodies and knockout cell lines, all of which support improved reproducibility.</p> <p>We are also planning to innovate the way in which we present recommended applications and species on our product datasheets, so that only applications & species that have been tested in our own labs, our suppliers or by selected trusted collaborators are covered by our Abpromise™ guarantee.</p> <p>In preparation for this, we have started to update the applications & species that this product is Abpromise guaranteed for.</p> <p>We are also updating the applications & species that this product has been “predicted to work with,” however this information is not covered by our Abpromise guarantee.</p> <p>Applications & species from publications and Abreviews that have not been tested in our own</p>

labs or in those of our suppliers are not covered by the Abpromise guarantee.

Please check that this product meets your needs before purchasing. If you have any questions, special requirements or concerns, please send us an inquiry and/or contact our Support team ahead of purchase. Recommended alternatives for this product can be found below, as well as customer reviews and Q&As.

Properties

Form	Liquid
Storage instructions	Shipped at 4°C. Store at +4°C short term (1-2 weeks). Upon delivery aliquot. Store at -20°C long term. Avoid freeze / thaw cycle.
Storage buffer	Preservative: 0.05% Sodium azide Constituent: 99% PBS
Purity	Protein G purified
Purification notes	Purified from tissue culture supernatant.
Clonality	Monoclonal
Clone number	8D12B10
Isotype	IgG1

Applications

Our [Abpromise guarantee](#) covers the use of **ab201977** in the following tested applications.

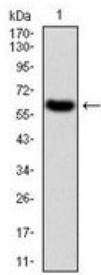
The application notes include recommended starting dilutions; optimal dilutions/concentrations should be determined by the end user.

Application	Abreviews	Notes
IHC-P		1/200 - 1/1000.
WB		1/500 - 1/2000. Predicted molecular weight: 125 kDa.

Target

Function	Transmembrane tyrosine-protein kinase that may modulate TEK/TIE2 activity and contribute to the regulation of angiogenesis.
Tissue specificity	Specifically expressed in developing vascular endothelial cells.
Sequence similarities	Belongs to the protein kinase superfamily. Tyr protein kinase family. Tie subfamily. Contains 3 EGF-like domains. Contains 3 fibronectin type-III domains. Contains 2 Ig-like C2-type (immunoglobulin-like) domains. Contains 1 protein kinase domain.
Post-translational modifications	Phosphorylated on tyrosine residues in response to ANGPT1, most likely by TEK/TIE2.
Cellular localization	Cell membrane.

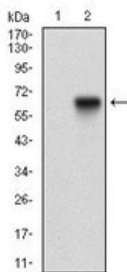
Images



Western blot - Anti-TIE1 antibody [8D12B10]
(ab201977)

Anti-TIE1 antibody [8D12B10] (ab201977) at 1/500 dilution +
human recombinant TIE1 protein

Predicted band size: 125 kDa



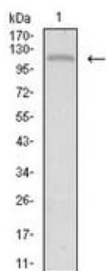
Western blot - Anti-TIE1 antibody [8D12B10]
(ab201977)

All lanes : Anti-TIE1 antibody [8D12B10] (ab201977) at 1/500
dilution

Lane 1 : Non-transfected HEK293 cell lysate

Lane 2 : TIE1 transfected HEK293 cell lysate

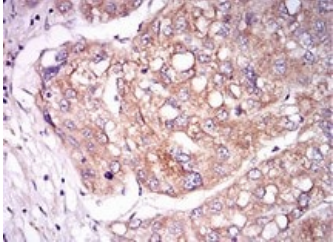
Predicted band size: 125 kDa



Western blot - Anti-TIE1 antibody [8D12B10]
(ab201977)

Anti-TIE1 antibody [8D12B10] (ab201977) at 1/500 dilution +
HepG2 cell lysate

Predicted band size: 125 kDa



Immunohistochemical analysis of paraffin-embedded human liver cancer tissues labeling TIE1 using ab201977 at 1/200 dilution followed by DAB staining.

Immunohistochemistry (Formalin/PFA-fixed paraffin-embedded sections) - Anti-TIE1 antibody [8D12B10] (ab201977)

Please note: All products are "FOR RESEARCH USE ONLY. NOT FOR USE IN DIAGNOSTIC PROCEDURES"

Our Abpromise to you: Quality guaranteed and expert technical support

- Replacement or refund for products not performing as stated on the datasheet
- Valid for 12 months from date of delivery
- Response to your inquiry within 24 hours
- We provide support in Chinese, English, French, German, Japanese and Spanish
- Extensive multi-media technical resources to help you
- We investigate all quality concerns to ensure our products perform to the highest standards

If the product does not perform as described on this datasheet, we will offer a refund or replacement. For full details of the Abpromise, please visit <https://www.abcam.com/abpromise> or contact our technical team.

Terms and conditions

- Guarantee only valid for products bought direct from Abcam or one of our authorized distributors