

Product datasheet

Anti-TIM 1 antibody [mAbcam75295] ab75295

1 Image

Overview

Product name	Anti-TIM 1 antibody [mAbcam75295]
Description	Mouse monoclonal [mAbcam75295] to TIM 1
Host species	Mouse
Tested applications	Suitable for: WB
Species reactivity	Reacts with: Human
Immunogen	Synthetic peptide corresponding to Human TIM 1 aa 300 to the C-terminus (C terminal). (Peptide available as ab97979)
Positive control	This antibody gave a positive signal in the human testis and brain tissue lysates.
General notes	This antibody clone is manufactured by Abcam. If you require this antibody in a particular buffer formulation or a particular conjugate for your experiments, please contact orders@abcam.com or you can find further information here .

Properties

Form	Liquid
Storage instructions	Shipped at 4°C. Store at +4°C short term (1-2 weeks). Upon delivery aliquot. Store at -20°C long term. Avoid freeze / thaw cycle. Store In the Dark.
Storage buffer	Preservative: 0.02% Sodium Azide Constituents: 1% BSA, PBS, pH 7.4
Purity	IgG fraction
Clonality	Monoclonal
Clone number	mAbcam75295
Myeloma	Sp2/0-Ag14
Isotype	IgG

Applications

Our [Abpromise guarantee](#) covers the use of **ab75295** in the following tested applications.

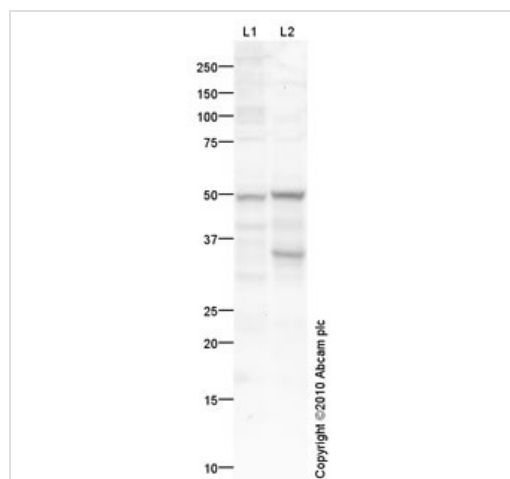
The application notes include recommended starting dilutions; optimal dilutions/concentrations should be determined by the end user.

Application	Abreviews	Notes
WB		Use a concentration of 10 mg/ml. Detects a band of approximately 50 kDa (predicted molecular weight: 39 kDa).

Target

Function	May play a role in T-helper cell development and the regulation of asthma and allergic diseases. Receptor for TIMD4 (By similarity). In case of human hepatitis A virus (HHAV) infection, functions as a cell-surface receptor for the virus. May play a role in kidney injury and repair.
Tissue specificity	Widely expressed, with highest levels in kidney and testis. Expressed by activated CD4+ T-cells during the development of helper T-cells responses.
Sequence similarities	Belongs to the immunoglobulin superfamily. TIM family. Contains 1 Ig-like V-type (immunoglobulin-like) domain.
Cellular localization	Membrane.

Images



Western blot - Anti-TIM 1 antibody [mAbcam75295] (ab75295)

All lanes : Anti-TIM 1 antibody [mAbcam75295] (ab75295) at 10 µg/ml

Lane 1 : Human testis tissue lysate - total protein ([ab30257](#))

Lane 2 : Human brain tissue lysate - total protein ([ab29466](#))

Lysates/proteins at 20 µg per lane.

Secondary

All lanes : Goat polyclonal to Mouse IgG - H&L - Pre-Adsorbed (HRP) at 1/3000 dilution

Developed using the ECL technique.

Performed under reducing conditions.

Predicted band size: 39 kDa

Observed band size: 50 kDa

[why is the actual band size different from the predicted?](#)

Additional bands at: 35 kDa. We are unsure as to the identity of these extra bands.

Exposure time: 90 seconds

The band at approximately 50-kDa is comparable to the molecular weight seen with other antibodies to TIM 1. TIM 1 contains a number of potential glycosylation sites (SwissProt), which may explain its migration at a higher molecular weight than predicted.

Please note: All products are "FOR RESEARCH USE ONLY. NOT FOR USE IN DIAGNOSTIC PROCEDURES"

Our Abpromise to you: Quality guaranteed and expert technical support

- Replacement or refund for products not performing as stated on the datasheet
- Valid for 12 months from date of delivery
- Response to your inquiry within 24 hours

- We provide support in Chinese, English, French, German, Japanese and Spanish
- Extensive multi-media technical resources to help you
- We investigate all quality concerns to ensure our products perform to the highest standards

If the product does not perform as described on this datasheet, we will offer a refund or replacement. For full details of the Abpromise, please visit <https://www.abcam.com/abpromise> or contact our technical team.

Terms and conditions

- Guarantee only valid for products bought direct from Abcam or one of our authorized distributors