


Product datasheet

Anti-Timeless antibody - N-terminal ab228599

3 Images

Overview

Product name	Anti-Timeless antibody - N-terminal
Description	Rabbit polyclonal to Timeless - N-terminal
Host species	Rabbit
Tested applications	Suitable for: ICC/IF, IHC-P, WB
Species reactivity	Reacts with: Human Predicted to work with: Mouse, Rat, Sheep, Cow 
Immunogen	Recombinant fragment within Human Timeless (N terminal). The exact sequence is proprietary. Database link: Q9UNS1
Positive control	WB: HeLa S3 whole cell lysate. IHC-P: SNU16 xenograft tissue. ICC/IF: HeLa cells.
General notes	<p>Reproducibility is key to advancing scientific discovery and accelerating scientists' next breakthrough.</p> <p>Abcam is leading the way with our range of recombinant antibodies, knockout-validated antibodies and knockout cell lines, all of which support improved reproducibility.</p> <p>We are also planning to innovate the way in which we present recommended applications and species on our product datasheets, so that only applications & species that have been tested in our own labs, our suppliers or by selected trusted collaborators are covered by our Abpromise™ guarantee.</p> <p>In preparation for this, we have started to update the applications & species that this product is Abpromise guaranteed for.</p> <p>We are also updating the applications & species that this product has been “predicted to work with,” however this information is not covered by our Abpromise guarantee.</p> <p>Applications & species from publications and Abreviews that have not been tested in our own labs or in those of our suppliers are not covered by the Abpromise guarantee.</p> <p>Please check that this product meets your needs before purchasing. If you have any questions, special requirements or concerns, please send us an inquiry and/or contact our Support team ahead of purchase. Recommended alternatives for this product can be found below, as well as customer reviews and Q&As.</p>

Properties

Form	Liquid
Storage instructions	Shipped at 4°C. Store at +4°C short term (1-2 weeks). Upon delivery aliquot. Store at -20°C long term. Avoid freeze / thaw cycle.
Storage buffer	pH: 7.00 Preservative: 0.01% Thimerosal (merthiolate) Constituents: 1.21% Tris, 0.75% Glycine, 10% Glycerol (glycerin, glycerine)
Purity	Immunogen affinity purified
Clonality	Polyclonal
Isotype	IgG

Applications

Our [Abpromise guarantee](#) covers the use of **ab228599** in the following tested applications.

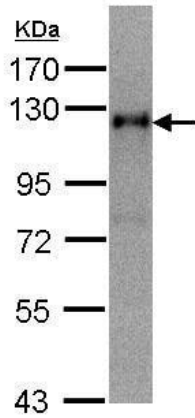
The application notes include recommended starting dilutions; optimal dilutions/concentrations should be determined by the end user.

Application	Abreviews	Notes
ICC/IF		1/100 - 1/1000.
IHC-P		1/100 - 1/1000.
WB		1/500 - 1/3000. Predicted molecular weight: 139 kDa.

Target

Function	Required for normal progression of S-phase. Involved in the circadian rhythm autoregulatory loop. Negatively regulates CLOCK-NPAS2/BMAL1-induced transactivation of PER1 possibly via translocation of PER1 into the nucleus. Promotes TIPIN nuclear localization. Involved in cell survival after DNA damage or replication stress. May be specifically required for the ATR-CHK1 pathway in the replication checkpoint induced by hydroxyurea or ultraviolet light. May also play an important role in epithelial cell morphogenesis and formation of branching tubules.
Tissue specificity	Expressed in all tissues examined including brain, heart, lung, liver, skeletal muscle, kidney, placenta, pancreas, spleen, thymus and testis. Highest levels of expression in placenta, pancreas, thymus and testis.
Sequence similarities	Belongs to the timeless family.
Cellular localization	Nucleus.

Images



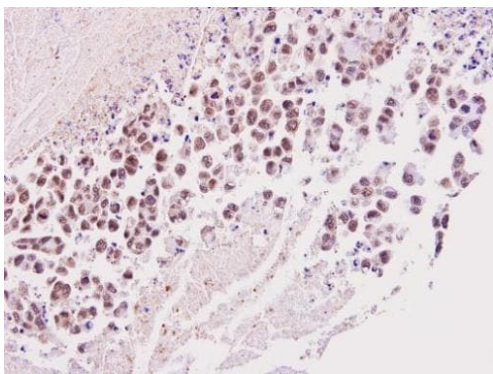
Western blot - Anti-Timeless antibody - N-terminal (ab228599)

Anti-Timeless antibody - N-terminal (ab228599) at 1/500 dilution + HeLa S3 (human epithelial cell line from cervix adenocarcinoma) whole cell lysate at 30 μ g

Developed using the ECL technique.

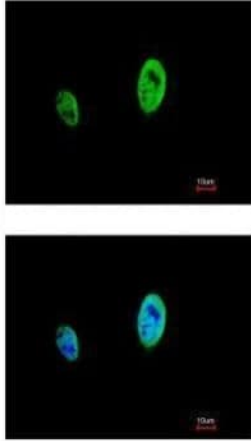
Predicted band size: 139 kDa

7.5% SDS-PAGE



Immunohistochemistry (Formalin/PFA-fixed paraffin-embedded sections) - Anti-Timeless antibody - N-terminal (ab228599)

Paraffin-embedded SNU16 xenograft tissue stained for Timeless with ab228599 at 1/100 dilution in immunohistochemical analysis.



Paraformaldehyde-fixed HeLa (human epithelial cell line from cervix adenocarcinoma) cells stained for Timeless (green) using ab228599 at 1/500 dilution in ICC/IF.

Blue: DNA probe.

Immunocytochemistry/ Immunofluorescence - Anti-Timeless antibody - N-terminal (ab228599)

Please note: All products are "FOR RESEARCH USE ONLY. NOT FOR USE IN DIAGNOSTIC PROCEDURES"

Our Abpromise to you: Quality guaranteed and expert technical support

- Replacement or refund for products not performing as stated on the datasheet
- Valid for 12 months from date of delivery
- Response to your inquiry within 24 hours
- We provide support in Chinese, English, French, German, Japanese and Spanish
- Extensive multi-media technical resources to help you
- We investigate all quality concerns to ensure our products perform to the highest standards

If the product does not perform as described on this datasheet, we will offer a refund or replacement. For full details of the Abpromise, please visit <https://www.abcam.com/abpromise> or contact our technical team.

Terms and conditions

- Guarantee only valid for products bought direct from Abcam or one of our authorized distributors