



Product datasheet

Anti-TIPIN antibody ab172792

1 Image

Overview

<b>Product name</b>	Anti-TIPIN antibody
<b>Description</b>	Mouse polyclonal to TIPIN
<b>Host species</b>	Mouse
<b>Tested applications</b>	<b>Suitable for:</b> WB
<b>Species reactivity</b>	<b>Reacts with:</b> Human
<b>Immunogen</b>	<p>Recombinant full length protein corresponding to Human TIPIN aa 1-301. (AAH00870.1)            Sequence:</p> <pre>           MLEPQENGVIDLPDYEHVEDETFPPFPPPPASPERQDG           EGTEPDEESGNGA           PVPVPPKRTVKRNIPKLDAQRLISERGLPALRHVFDKA           KFKGKGHEAEDL           KMLIRHMEHWAHRLFPKLQFEDFIDRVEYLGSKKEVQT           CLKRIRLDLPIL           HEDFVSNNDEVAENNEHDVTSTELDPFLTNLSESEMF           ASELSRSLTEEQQ           QRIERNKQLALERRQAKLLSNSQTLGNDMLMNTPRAH           TVEEVNTDEDQKE           ESNGLNEDILDNPCNDAIANTLNEEETLLDQSFKNVQQ           QLDATSRNITEA R           </pre> <p>Database link: <a href="#">Q9BVW5</a></p> <p style="text-align: right;">  <a href="#">Run BLAST with</a>                 <a href="#">Run BLAST with</a> </p>
<b>Positive control</b>	TIPIN transfected 293T cell line lysate

Properties

<b>Form</b>	Liquid
<b>Storage instructions</b>	Shipped at 4°C. Store at +4°C short term (1-2 weeks). Upon delivery aliquot. Store at -20°C long term. Avoid freeze / thaw cycle.
<b>Storage buffer</b>	pH: 7.2 Constituent: 100% PBS
<b>Purity</b>	Protein A purified

<b>Clonality</b>	Polyclonal
<b>Isotype</b>	IgG

## Applications

Our [Abpromise guarantee](#) covers the use of **ab172792** in the following tested applications.

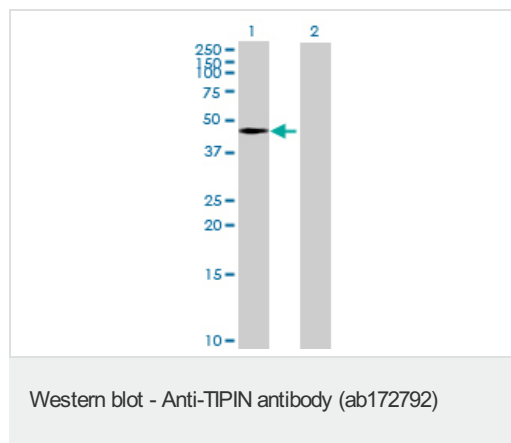
The application notes include recommended starting dilutions; optimal dilutions/concentrations should be determined by the end user.

Application	Abreviews	Notes
WB		Use a concentration of 1 µg/ml. Predicted molecular weight: 35 kDa.

## Target

<b>Function</b>	Required for normal progression of S-phase. Important for cell survival after DNA damage or replication stress. May be specifically required for the ATR-CHEK1 pathway in the replication checkpoint induced by hydroxyurea or ultraviolet light.
<b>Sequence similarities</b>	Belongs to the CSM3 family.
<b>Post-translational modifications</b>	Phosphorylated upon DNA damage, probably by ATM or ATR.
<b>Cellular localization</b>	Cytoplasm. Nucleus.

## Images



**All lanes** : Anti-TIPIN antibody (ab172792) at 1 µg/ml

**Lane 1** : TIPIN transfected 293T cell line lysate

**Lane 2** : Non-transfected 293T cell line lysate

Lysates/proteins at 15 µl per lane.

### Secondary

**All lanes** : Goat Anti-Mouse IgG at 1/2500 dilution

**Predicted band size:** 35 kDa

**Please note:** All products are "FOR RESEARCH USE ONLY. NOT FOR USE IN DIAGNOSTIC PROCEDURES"

## Our Abpromise to you: Quality guaranteed and expert technical support

- Replacement or refund for products not performing as stated on the datasheet

- Valid for 12 months from date of delivery
- Response to your inquiry within 24 hours
  
- We provide support in Chinese, English, French, German, Japanese and Spanish
- Extensive multi-media technical resources to help you
- We investigate all quality concerns to ensure our products perform to the highest standards

If the product does not perform as described on this datasheet, we will offer a refund or replacement. For full details of the Abpromise, please visit <https://www.abcam.com/abpromise> or contact our technical team.

### **Terms and conditions**

---

- Guarantee only valid for products bought direct from Abcam or one of our authorized distributors