

Product datasheet

Anti-TJP2/ZO2 antibody - C-terminal ab191133

★ ★ ★ ★ ★ 3 Abreviews
 [1 References](#)
 [2 Images](#)

Overview

Product name	Anti-TJP2/ZO2 antibody - C-terminal
Description	Rabbit polyclonal to TJP2/ZO2 - C-terminal
Host species	Rabbit
Tested applications	Suitable for: WB, IHC-P
Species reactivity	Reacts with: Mouse, Rat
Immunogen	Synthetic peptide corresponding to Mouse TJP2/ZO2 aa 1149-1167 (C terminal). Sequence: AHSKRGYYSQPSRYRDEL Database link: Q9Z0U1 <div style="display: inline-block; margin-left: 20px;"> Run BLAST with </div> <div style="display: inline-block; margin-left: 20px;"> Run BLAST with </div>
Positive control	Mouse liver tissue; Rat brain, Mouse brain tissue lysates; PC12 and HEPA cell lysates.
General notes	This product was previously labelled as TJP2

Reproducibility is key to advancing scientific discovery and accelerating scientists' next breakthrough.

Abcam is leading the way with our range of recombinant antibodies, knockout-validated antibodies and knockout cell lines, all of which support improved reproducibility.

We are also planning to innovate the way in which we present recommended applications and species on our product datasheets, so that only applications & species that have been tested in our own labs, our suppliers or by selected trusted collaborators are covered by our Abpromise™ guarantee.

In preparation for this, we have started to update the applications & species that this product is Abpromise guaranteed for.

We are also updating the applications & species that this product has been “predicted to work with,” however this information is not covered by our Abpromise guarantee.

Applications & species from publications and Abreviews that have not been tested in our own labs or in those of our suppliers are not covered by the Abpromise guarantee.

Please check that this product meets your needs before purchasing. If you have any questions, special requirements or concerns, please send us an inquiry and/or contact our Support team ahead of purchase. Recommended alternatives for this product can be found below, as well as

customer reviews and Q&As.

Properties

Form	Liquid
Storage instructions	Shipped at 4°C. Store at +4°C short term (1-2 weeks). Upon delivery aliquot. Store at -20°C long term. Avoid freeze / thaw cycle.
Storage buffer	Preservatives: 0.025% Sodium azide, 0.025% Thimerosal (merthiolate) Constituents: 2.5% BSA, 0.45% Sodium chloride, 0.1% Dibasic monohydrogen sodium phosphate
Purity	Immunogen affinity purified
Clonality	Polyclonal
Isotype	IgG

Applications

Our [Abpromise guarantee](#) covers the use of **ab191133** in the following tested applications.

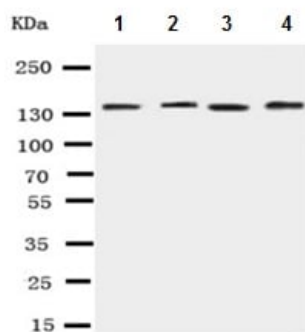
The application notes include recommended starting dilutions; optimal dilutions/concentrations should be determined by the end user.

Application	Abreviews	Notes
WB	★ ★ ★ ★ ★	Use a concentration of 0.1 - 0.5 µg/ml. Predicted molecular weight: 131 kDa.
IHC-P		Use a concentration of 0.5 - 1 µg/ml. Perform heat mediated antigen retrieval with citrate buffer pH 6 before commencing with IHC staining protocol.

Target

Function	Plays a role in tight junctions and adherens junctions.
Tissue specificity	This protein is found in epithelial cell junctions. Isoform A1 is abundant in the heart and brain. Detected in brain and skeletal muscle. It is present almost exclusively in normal tissues. Isoform C1 is expressed at high level in the kidney, pancreas, heart and placenta. Not detected in brain and skeletal muscle. Found in normal as well as in most neoplastic tissues.
Involvement in disease	Defects in TJP2 are involved in familial hypercholanemia (FHCA) [MIM:607748]. FHCA is a disorder characterized by elevated serum bile acid concentrations, itching, and fat malabsorption.
Sequence similarities	Belongs to the MAGUK family. Contains 1 guanylate kinase-like domain. Contains 3 PDZ (DHR) domains. Contains 1 SH3 domain.
Cellular localization	Cell junction > adherens junction. Cell membrane. Cell junction > tight junction. Nucleus. Also nuclear under environmental stress conditions and in migratory endothelial cells and subconfluent epithelial cell cultures.

Images



Western blot - Anti-TJP2/ZO2 antibody - C-terminal (ab191133)

All lanes : Anti-TJP2/ZO2 antibody - C-terminal (ab191133) at 0.5 µg/ml

Lane 1 : Rat brain tissue lysate

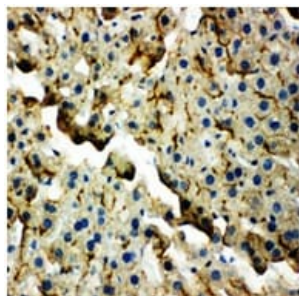
Lane 2 : PC12 cell lysate

Lane 3 : Mouse brain tissue lysate

Lane 4 : HEPA cell lysate

Predicted band size: 131 kDa

The detection limit for TJP2/ZO2 is approximately 2.5 ng/lane under reducing conditions.



Immunohistochemistry (Formalin/PFA-fixed paraffin-embedded sections) - Anti-TJP2/ZO2 antibody - C-terminal (ab191133)

Immunohistochemical analysis of paraffin embedded Mouse liver tissue labeling TJP2/ZO2 using ab191133 at 1 µg/ml.

Please note: All products are "FOR RESEARCH USE ONLY. NOT FOR USE IN DIAGNOSTIC PROCEDURES"

Our Abpromise to you: Quality guaranteed and expert technical support

- Replacement or refund for products not performing as stated on the datasheet
- Valid for 12 months from date of delivery
- Response to your inquiry within 24 hours
- We provide support in Chinese, English, French, German, Japanese and Spanish
- Extensive multi-media technical resources to help you
- We investigate all quality concerns to ensure our products perform to the highest standards

If the product does not perform as described on this datasheet, we will offer a refund or replacement. For full details of the Abpromise, please visit <https://www.abcam.com/abpromise> or contact our technical team.

Terms and conditions

- Guarantee only valid for products bought direct from Abcam or one of our authorized distributors