


Product datasheet

Anti-TLE 1 antibody [TLE1/2085] - BSA and Azide free ab237916

[4 Images](#)

Overview

Product name	Anti-TLE 1 antibody [TLE1/2085] - BSA and Azide free
Description	Mouse monoclonal [TLE1/2085] to TLE 1 - BSA and Azide free
Host species	Mouse
Tested applications	Suitable for: Protein Array, IHC-P, WB
Species reactivity	<p>Reacts with: Human</p> <p>Predicted to work with: Mouse </p>
Immunogen	Recombinant fragment within Human TLE 1 aa 175-338. The exact sequence is proprietary. Database link: Q04724
Positive control	IHC-P: Human endometrial carcinoma tissue. WB: MCF7, HepG2, SH-SY5Y and HeLa whole cell lysate.
General notes	<p>Reproducibility is key to advancing scientific discovery and accelerating scientists' next breakthrough.</p> <p>Abcam is leading the way with our range of recombinant antibodies, knockout-validated antibodies and knockout cell lines, all of which support improved reproducibility.</p> <p>We are also planning to innovate the way in which we present recommended applications and species on our product datasheets, so that only applications & species that have been tested in our own labs, our suppliers or by selected trusted collaborators are covered by our Abpromise™ guarantee.</p> <p>In preparation for this, we have started to update the applications & species that this product is Abpromise guaranteed for.</p> <p>We are also updating the applications & species that this product has been “predicted to work with,” however this information is not covered by our Abpromise guarantee.</p> <p>Applications & species from publications and Abreviews that have not been tested in our own labs or in those of our suppliers are not covered by the Abpromise guarantee.</p> <p>Please check that this product meets your needs before purchasing. If you have any questions, special requirements or concerns, please send us an inquiry and/or contact our Support team ahead of purchase. Recommended alternatives for this product can be found below, as well as customer reviews and Q&As.</p>

Properties

Form	Liquid
Storage instructions	Shipped at 4°C. Store at +4°C short term (1-2 weeks). Upon delivery aliquot. Store at -20°C long term. Avoid freeze / thaw cycle.
Storage buffer	Constituent: PBS
Carrier free	Yes
Purity	Protein A/G purified
Purification notes	Ab purified from Bioreactor Concentrate by Protein A/G.
Clonality	Monoclonal
Clone number	TLE1/2085
Isotype	IgG2a
Light chain type	kappa

Applications

Our [Abpromise guarantee](#) covers the use of **ab237916** in the following tested applications.

The application notes include recommended starting dilutions; optimal dilutions/concentrations should be determined by the end user.

Application	Abreviews	Notes
Protein Array		Use at an assay dependent concentration.
IHC-P		Use a concentration of 1 - 2 µg/ml. Perform heat mediated antigen retrieval with citrate buffer pH 6 before commencing with IHC staining protocol. Incubate with primary ab for 30 minutes at RT
WB		Use a concentration of 1 - 2 µg/ml. Predicted molecular weight: 83 kDa.

Target

Function	Transcriptional corepressor that binds to a number of transcription factors. Inhibits NF-kappa-B-regulated gene expression. Inhibits the transcriptional activation mediated by FOXA2, and by CTNNB1 and TCF family members in Wnt signaling. The effects of full-length TLE family members may be modulated by association with dominant-negative AES. Unusual function as coactivator for ESRRG.
Tissue specificity	In all tissues examined, mostly in brain, liver and muscle.
Sequence similarities	Belongs to the WD repeat Groucho/TLE family. Contains 6 WD repeats.
Domain	WD repeat Groucho/TLE family members are characterized by 5 regions, a glutamine-rich Q domain, a glycine/proline-rich GP domain, a central CcN domain, containing a nuclear localization signal, and a serine/proline-rich SP domain. The most highly conserved are the N-terminal Q domain and the C-terminal WD-repeat domain.
Post-translational modifications	Phosphorylated, probably by CDK1. The degree of phosphorylation varies throughout the cell cycle, and is highest at the G2/M transition. Becomes hyperphosphorylated in response to cell

differentiation and interaction with HES1 or RUNX1.

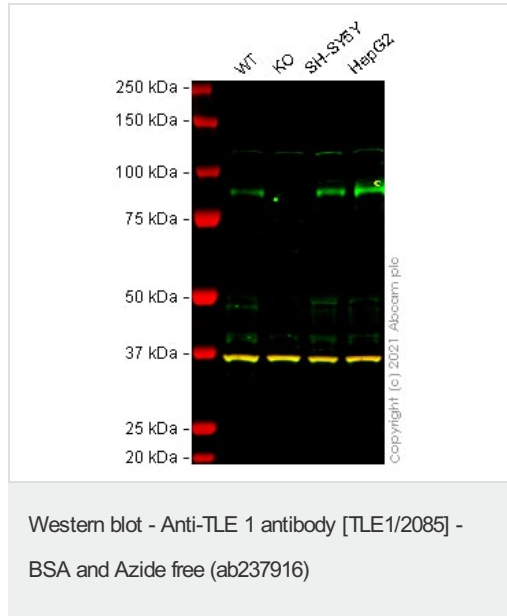
Ubiquitinated by XIAP/BIRC4.

Cellular localization

Nucleus. Nuclear and chromatin-associated, depending on isoforms and phosphorylation status.

Hyperphosphorylation decreases the affinity for nuclear components.

Images



All lanes : Anti-TLE 1 antibody [TLE1/2085] ([ab238065](#)) at 1 µg/ml

Lane 1 : Wild-type MCF7 cell lysate

Lane 2 : TLE1 knockout MCF7 cell lysate

Lane 3 : SH-SY5Y cell lysate

Lane 4 : HepG2 cell lysate

Lysates/proteins at 20 µg per lane.

Performed under reducing conditions.

Predicted band size: 83 kDa

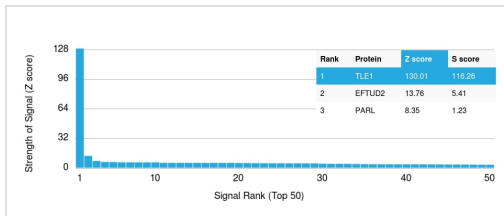
Observed band size: 83 kDa

This data was developed using the same antibody clone in a different buffer formulation ([ab238065](#)).

This product was validated with an edited cell line that does not express the epitope recognised by this antibody. Testing with other antibodies has shown that the edited cell line produces a truncated protein.

Lanes 1 -4: Merged signal (red and green). Green - [ab238065](#) observed at 83 kDa. Red - loading control [ab181602](#) (Rabbit Anti-GAPDH antibody [EPR16891]) observed at 37 kDa.

[ab238065](#) was shown to react with TLE 1 in wild-type MCF7 cells in Western blot with loss of signal observed in TLE1 knockout sample. Wild-type MCF7 and TLE1 knockout cell lysates were subjected to SDS-PAGE. Membranes were blocked in 3 % milk in TBS-T (0.1 % Tween[®]) before incubation with [ab238065](#) and [ab181602](#) (Rabbit Anti-GAPDH antibody [EPR16891]) overnight at 4°C at 1 µg/ml and a 1 in 20000 dilution respectively. Blots were incubated with Goat anti-Mouse IgG H&L (IRDye[®] 800CW) preabsorbed ([ab216772](#)) and Goat anti-Rabbit IgG H&L (IRDye[®] 680RD) preabsorbed ([ab216777](#)) secondary antibodies at 1 in 20000 dilution for 1 h at room temperature before imaging.



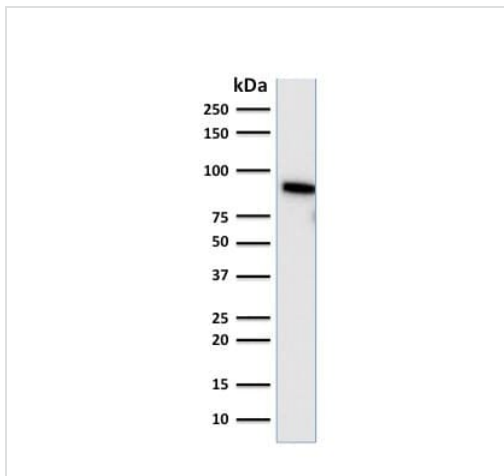
Protein Array - Anti-TLE 1 antibody [TLE1/2085] - BSA and Azide free (ab237916)

This data was produced with [ab238065](#), the same antibody in a different formulation with BSA and Azide.

[ab238065](#) was tested in protein array against over 19000 different full-length human proteins.

Z- and S- Score: The Z-score represents the strength of a signal that a monoclonal antibody (MAb) (in combination with a fluorescently-tagged anti-IgG secondary antibody) produces when binding to a particular protein on the HuProt™ array. Z-scores are described in units of standard deviations (SD's) above the mean value of all signals generated on that array. If targets on HuProt™ are arranged in descending order of the Z-score, the S-score is the difference (also in units of SD's) between the Z-score. S-score therefore represents the relative target specificity of a MAb to its intended target.

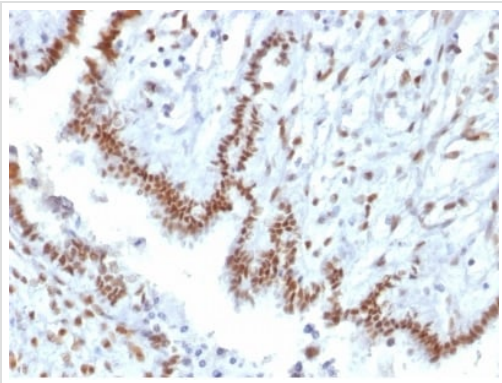
A MAb is specific to its intended target if the MAb has an S-score of at least 2.5. For example, if a MAb binds to protein X with a Z-score of 43 and to protein Y with a Z-score of 14, then the S-score for the binding of that MAb to protein X is equal to 29.



Western blot - Anti-TLE 1 antibody [TLE1/2085] - BSA and Azide free (ab237916)

Anti-TLE 1 antibody [TLE1/2085] - BSA and Azide free (ab237916) at 1 µg/ml + HeLa (human epithelial cell line from cervix adenocarcinoma) whole cell lysate

Predicted band size: 83 kDa



Formalin-fixed, paraffin-embedded human endometrial carcinoma tissue stained for TLE 1 using ab237916 at 2 µg/mL in immunohistochemical analysis.

Immunohistochemistry (Formalin/PFA-fixed paraffin-embedded sections) - Anti-TLE 1 antibody [TLE1/2085] - BSA and Azide free (ab237916)

Please note: All products are "FOR RESEARCH USE ONLY. NOT FOR USE IN DIAGNOSTIC PROCEDURES"

Our Abpromise to you: Quality guaranteed and expert technical support

- Replacement or refund for products not performing as stated on the datasheet
- Valid for 12 months from date of delivery
- Response to your inquiry within 24 hours
- We provide support in Chinese, English, French, German, Japanese and Spanish
- Extensive multi-media technical resources to help you
- We investigate all quality concerns to ensure our products perform to the highest standards

If the product does not perform as described on this datasheet, we will offer a refund or replacement. For full details of the Abpromise, please visit <https://www.abcam.com/abpromise> or contact our technical team.

Terms and conditions

- Guarantee only valid for products bought direct from Abcam or one of our authorized distributors