

Product datasheet

Anti-TLR8 antibody ab53630

3 References 2 Images

Overview

<b>Product name</b>	Anti-TLR8 antibody
<b>Description</b>	Goat polyclonal to TLR8
<b>Host species</b>	Goat
<b>Tested applications</b>	<b>Suitable for:</b> IHC-P
<b>Species reactivity</b>	<b>Reacts with:</b> Mouse, Human
<b>Immunogen</b>	Synthetic peptide: CESFQGLQNLTKINLNHNPNVQHQNPNPGI , corresponding to amino acids 81-109 of Human TLR8 <a href="#">Run BLAST with</a> <a href="#">Run BLAST with</a>

Properties

<b>Form</b>	Liquid
<b>Storage instructions</b>	Shipped at 4°C. Upon delivery aliquot. Avoid freeze / thaw cycle.
<b>Storage buffer</b>	pH: 7.20 Preservative: 0.1% Sodium azide Constituents: 0.1% BSA, 0.21% Potassium phosphate, 0.812% Sodium chloride, PBS
<b>Purity</b>	Immunogen affinity purified
<b>Clonality</b>	Polyclonal
<b>Isotype</b>	IgG

Applications

Our [Abpromise guarantee](#) covers the use of **ab53630** in the following tested applications.

The application notes include recommended starting dilutions; optimal dilutions/concentrations should be determined by the end user.

Application	Abreviews	Notes
IHC-P		Use at an assay dependent concentration.

## Target

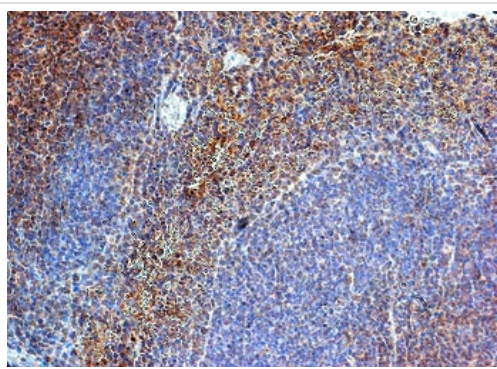
---

<b>Function</b>	Key component of innate and adaptive immunity. TLRs (Toll-like receptors) control host immune response against pathogens through recognition of molecular patterns specific of microorganisms. Acts via MYD88 and TRAF6, leading to NF-kappa-B activation, cytokine secretion and the inflammatory response.
<b>Tissue specificity</b>	Detected in brain, heart, lung, liver, placenta, in monocytes, and at lower levels in CD11c+ immature dendritic cells.
<b>Sequence similarities</b>	Belongs to the Toll-like receptor family. Contains 23 LRR (leucine-rich) repeats. Contains 1 LRRCT domain. Contains 1 TIR domain.
<b>Cellular localization</b>	Membrane.

---

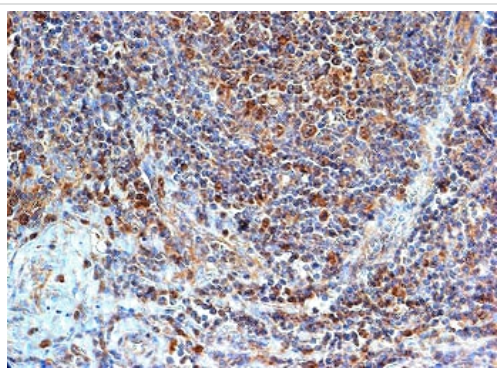
## Images

---



ab53630 at 1/250 dilution staining TLR8 in mouse spleen by Immunohistochemistry, Paraffin embedded tissue.

Immunohistochemistry (Formalin/PFA-fixed paraffin-embedded sections) - Anti-TLR8 antibody (ab53630)



ab53630 at 1/250 dilution staining TLR8 in human tonsil by Immunohistochemistry, Paraffin embedded tissue.

Immunohistochemistry (Formalin/PFA-fixed paraffin-embedded sections) - Anti-TLR8 antibody (ab53630)

**Please note:** All products are "FOR RESEARCH USE ONLY. NOT FOR USE IN DIAGNOSTIC PROCEDURES"

## **Our Abpromise to you: Quality guaranteed and expert technical support**

---

- Replacement or refund for products not performing as stated on the datasheet
- Valid for 12 months from date of delivery
- Response to your inquiry within 24 hours
  
- We provide support in Chinese, English, French, German, Japanese and Spanish
- Extensive multi-media technical resources to help you
- We investigate all quality concerns to ensure our products perform to the highest standards

If the product does not perform as described on this datasheet, we will offer a refund or replacement. For full details of the Abpromise, please visit <https://www.abcam.com/abpromise> or contact our technical team.

## **Terms and conditions**

---

- Guarantee only valid for products bought direct from Abcam or one of our authorized distributors