


Product datasheet

Anti-TLR9 antibody - N-terminal ab227004

3 Images

Overview

Product name	Anti-TLR9 antibody - N-terminal
Description	Rabbit polyclonal to TLR9 - N-terminal
Host species	Rabbit
Tested applications	Suitable for: IHC-P, WB
Species reactivity	Reacts with: Human Predicted to work with: Rhesus monkey 
Immunogen	Synthetic peptide within Human TLR9 (N terminal). The exact sequence is proprietary. Conjugated to a carrier protein. Database link: Q9NR96
Positive control	IHC-P: Human lung cancer tissue. WB: THP-1 whole cell lysate; TLR9 transfected HEK-293T lysate.
General notes	<p>Reproducibility is key to advancing scientific discovery and accelerating scientists' next breakthrough.</p> <p>Abcam is leading the way with our range of recombinant antibodies, knockout-validated antibodies and knockout cell lines, all of which support improved reproducibility.</p> <p>We are also planning to innovate the way in which we present recommended applications and species on our product datasheets, so that only applications & species that have been tested in our own labs, our suppliers or by selected trusted collaborators are covered by our Abpromise™ guarantee.</p> <p>In preparation for this, we have started to update the applications & species that this product is Abpromise guaranteed for.</p> <p>We are also updating the applications & species that this product has been “predicted to work with,” however this information is not covered by our Abpromise guarantee.</p> <p>Applications & species from publications and Abreviews that have not been tested in our own labs or in those of our suppliers are not covered by the Abpromise guarantee.</p> <p>Please check that this product meets your needs before purchasing. If you have any questions, special requirements or concerns, please send us an inquiry and/or contact our Support team ahead of purchase. Recommended alternatives for this product can be found below, as well as customer reviews and Q&As.</p>

Properties

Properties

Form	Liquid
Storage instructions	Shipped at 4°C. Store at +4°C short term (1-2 weeks). Upon delivery aliquot. Store at -20°C long term. Avoid freeze / thaw cycle.
Storage buffer	pH: 7.00 Preservative: 0.01% Thimerosal (merthiolate) Constituents: 1.21% Tris, 0.75% Glycine, 10% Glycerol (glycerin, glycerine)
Purity	Immunogen affinity purified
Clonality	Polyclonal
Isotype	IgG

Applications

Our [Abpromise guarantee](#) covers the use of **ab227004** in the following tested applications.

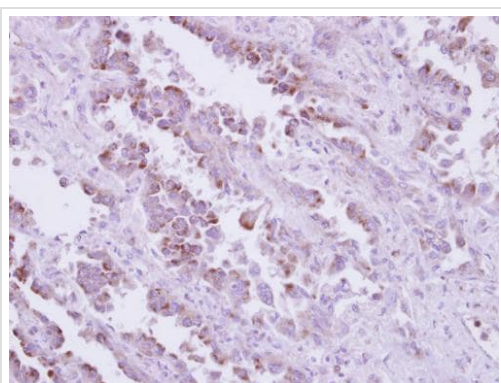
The application notes include recommended starting dilutions; optimal dilutions/concentrations should be determined by the end user.

Application	Abreviews	Notes
IHC-P		1/100 - 1/1000.
WB		1/500 - 1/3000. Predicted molecular weight: 116 kDa.

Target

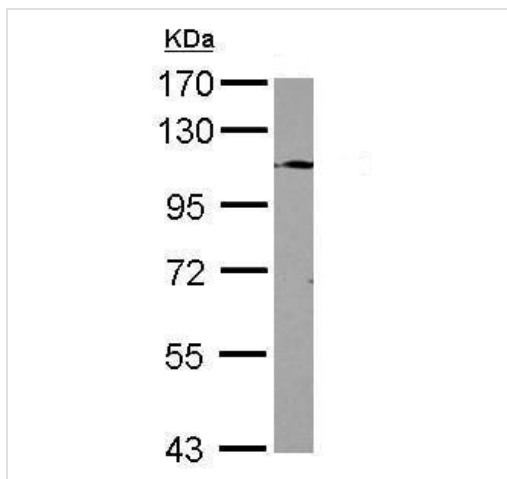
Function	Key component of innate and adaptive immunity. TLRs (Toll-like receptors) control host immune response against pathogens through recognition of molecular patterns specific of microorganisms. TLR9 is a nucleotide-sensing TLR which is activated by unmethylated cytidine-phosphate-guanosine (CpG) dinucleotides. Acts via MYD88 and TRAF6, leading to NF-kappa-B activation, cytokine secretion and the inflammatory response.
Tissue specificity	Highly expressed in spleen, lymph node, tonsil and peripheral blood leukocytes, especially in plasmacytoid pre-dendritic cells. Levels are much lower in monocytes and CD11c+ immature dendritic cells. Also detected in lung and liver.
Sequence similarities	Belongs to the Toll-like receptor family. Contains 26 LRR (leucine-rich) repeats. Contains 1 TIR domain.
Cellular localization	Endoplasmic reticulum membrane. Endosome. Lysosome. Cytoplasmic vesicle > phagosome. Relocalizes from endoplasmic reticulum to endosome and lysosome upon stimulation with agonist.

Images



Immunohistochemistry (Formalin/PFA-fixed paraffin-embedded sections) - Anti-TLR9 antibody - N-terminal (ab227004)

Paraffin-embedded human lung cancer tissue stained for TLR9 using ab227004 at 1/250 dilution in immunohistochemical analysis.

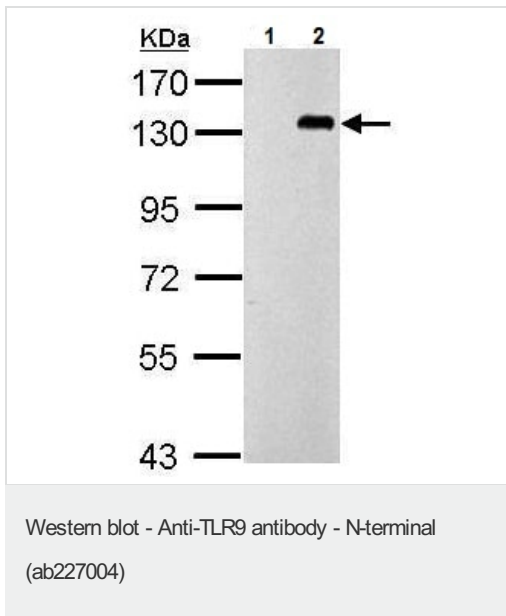


Western blot - Anti-TLR9 antibody - N-terminal (ab227004)

Anti-TLR9 antibody - N-terminal (ab227004) at 1/1000 dilution + THP-1 (human monocytic leukemia cell line) whole cell lysate at 30 μ g

Predicted band size: 116 kDa

7.5% SDS PAGE gel.



All lanes : Anti-TLR9 antibody - N-terminal (ab227004) at 1/2000 dilution

Lane 1 : Non-transfected HEK-293T (human epithelial cell line from embryonic kidney transformed with large T antigen) cell lysate

Lane 2 : TLR9 transfected HEK-293T (human epithelial cell line from embryonic kidney transformed with large T antigen) cell lysate

Lysates/proteins at 30 µg per lane.

Predicted band size: 116 kDa

7.5% SDS PAGE gel.

Please note: All products are "FOR RESEARCH USE ONLY. NOT FOR USE IN DIAGNOSTIC PROCEDURES"

Our Abpromise to you: Quality guaranteed and expert technical support

- Replacement or refund for products not performing as stated on the datasheet
- Valid for 12 months from date of delivery
- Response to your inquiry within 24 hours
- We provide support in Chinese, English, French, German, Japanese and Spanish
- Extensive multi-media technical resources to help you
- We investigate all quality concerns to ensure our products perform to the highest standards

If the product does not perform as described on this datasheet, we will offer a refund or replacement. For full details of the Abpromise, please visit <https://www.abcam.com/abpromise> or contact our technical team.

Terms and conditions

- Guarantee only valid for products bought direct from Abcam or one of our authorized distributors