

## Product datasheet

# Anti-TLX1 antibody ab78498

[1 References](#) [1 Image](#)

### Overview

---

<b>Product name</b>	Anti-TLX1 antibody
<b>Description</b>	Rabbit polyclonal to TLX1
<b>Host species</b>	Rabbit
<b>Tested applications</b>	<b>Suitable for:</b> IHC-P
<b>Species reactivity</b>	<b>Reacts with:</b> Human
<b>Immunogen</b>	Synthetic peptide corresponding to Human TLX1 aa 300-330.
<b>General notes</b>	This product was previously labelled as HOX11

The Life Science industry has been in the grips of a reproducibility crisis for a number of years. Abcam is leading the way in addressing this with our range of recombinant monoclonal antibodies and knockout edited cell lines for gold-standard validation. Please check that this product meets your needs before purchasing.

If you have any questions, special requirements or concerns, please send us an inquiry and/or contact our Support team ahead of purchase. Recommended alternatives for this product can be found below, along with publications, customer reviews and Q&As

### Properties

---

<b>Form</b>	Liquid
<b>Storage instructions</b>	Shipped at 4°C. Store at +4°C short term (1-2 weeks). Upon delivery aliquot. Store at -20°C. Avoid freeze / thaw cycle.
<b>Storage buffer</b>	Preservative: 0.05% Sodium azide Constituents: 0.2% Gelatin, PBS
<b>Purity</b>	Protein G purified
<b>Clonality</b>	Polyclonal
<b>Isotype</b>	IgG

### Applications

---

**The Abpromise guarantee** Our [Abpromise guarantee](#) covers the use of ab78498 in the following tested applications.

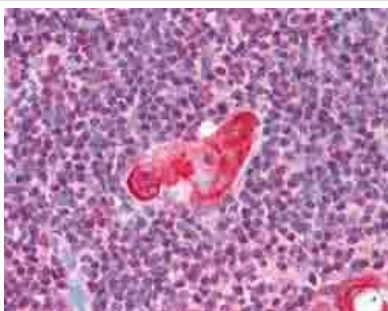
The application notes include recommended starting dilutions; optimal dilutions/concentrations should be determined by the end user.

Application	Abreviews	Notes
IHC-P		Use a concentration of 5 µg/ml.

## Target

<b>Function</b>	Controls the genesis of the spleen. Binds to the DNA sequence 5'-GGCGGTAAGTGG-3'.
<b>Involvement in disease</b>	Note=A chromosomal aberration involving TLX1 may be a cause of a form of T-cell acute lymphoblastic leukemia (T-ALL). Translocation t(10;14)(q24;q11) with TCRD.
<b>Sequence similarities</b>	Contains 1 homeobox DNA-binding domain.
<b>Cellular localization</b>	Nucleus.

## Images



ab78498, at 5µg/ml, staining TLX1 in human thymus tissue.

Immunohistochemistry (Formalin/PFA-fixed paraffin-embedded sections) - Anti-TLX1 antibody (ab78498)

**Please note:** All products are "FOR RESEARCH USE ONLY. NOT FOR USE IN DIAGNOSTIC PROCEDURES"

## Our Abpromise to you: Quality guaranteed and expert technical support

- Replacement or refund for products not performing as stated on the datasheet
- Valid for 12 months from date of delivery
- Response to your inquiry within 24 hours
- We provide support in Chinese, English, French, German, Japanese and Spanish
- Extensive multi-media technical resources to help you
- We investigate all quality concerns to ensure our products perform to the highest standards

If the product does not perform as described on this datasheet, we will offer a refund or replacement. For full details of the Abpromise, please visit <https://www.abcam.com/abpromise> or contact our technical team.

## Terms and conditions

- Guarantee only valid for products bought direct from Abcam or one of our authorized distributors