

Product datasheet

Anti-TM2D1/BBP antibody ab192380

1 Image

Overview

Product name	Anti-TM2D1/BBP antibody
Description	Rabbit polyclonal to TM2D1/BBP
Host species	Rabbit
Specificity	This antibody detects endogenous levels of TM2D1/BBP protein.
Tested applications	Suitable for: WB
Species reactivity	Reacts with: Mouse, Human
Immunogen	Synthetic peptide within Human TM2D1/BBP. The exact sequence is proprietary. Database link: Q9BX74
Positive control	MCF-7 whole cell and Mouse kidney tissue lysates.
General notes	Previously labelled as TM2D1.

Properties

Form	Liquid
Storage instructions	Shipped at 4°C. Store at +4°C short term (1-2 weeks). Upon delivery aliquot. Store at -20°C long term. Avoid freeze / thaw cycle.
Storage buffer	Preservative: 0.1% Sodium azide Constituents: 50% Glycerol, 49% PBS
Purity	Immunogen affinity purified
Purification notes	Purity is > 95% (by SDS-PAGE).
Clonality	Polyclonal
Isotype	IgG

Applications

Our [Abpromise guarantee](#) covers the use of **ab192380** in the following tested applications.

The application notes include recommended starting dilutions; optimal dilutions/concentrations should be determined by the end user.

Application	Abreviews	Notes
WB		Use at an assay dependent concentration. Predicted molecular weight: 22 kDa.

Target

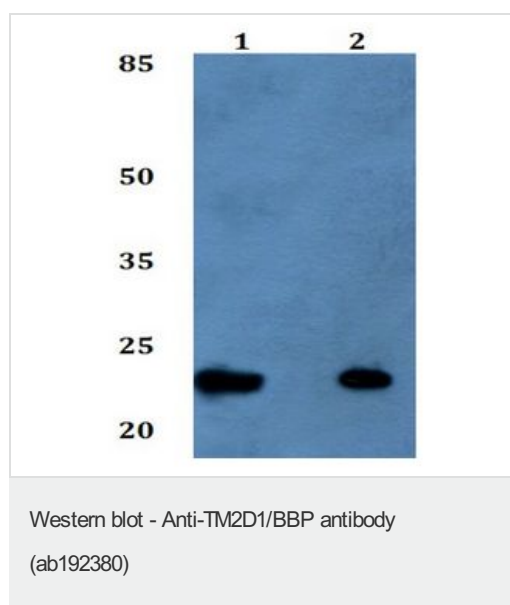
Relevance

The protein encoded by this gene is a beta-amyloid peptide-binding protein. It contains a structural module related to that of the seven transmembrane domain G protein-coupled receptor superfamily and known to be important in heterotrimeric G protein activation. Beta-amyloid peptide has been established to be a causative factor in neuron death and the consequent diminution of cognitive abilities observed in Alzheimer's disease. This protein may be a target of neurotoxic beta-amyloid peptide, and may mediate cellular vulnerability to beta-amyloid peptide toxicity through a G protein-regulated program of cell death.

Cellular localization

Membrane; Multi-pass membrane protein

Images



All lanes : Anti-TM2D1/BBP antibody (ab192380)

Lane 1 : MCF-7 whole cell lysate.

Lane 2 : Mouse kidney tissue lysate.

Predicted band size: 22 kDa

Please note: All products are "FOR RESEARCH USE ONLY. NOT FOR USE IN DIAGNOSTIC PROCEDURES"

Our Abpromise to you: Quality guaranteed and expert technical support

- Replacement or refund for products not performing as stated on the datasheet
- Valid for 12 months from date of delivery
- Response to your inquiry within 24 hours
- We provide support in Chinese, English, French, German, Japanese and Spanish
- Extensive multi-media technical resources to help you
- We investigate all quality concerns to ensure our products perform to the highest standards

If the product does not perform as described on this datasheet, we will offer a refund or replacement. For full details of the Abpromise, please visit <https://www.abcam.com/abpromise> or contact our technical team.

Terms and conditions

- Guarantee only valid for products bought direct from Abcam or one of our authorized distributors