

Product datasheet

Anti-TMEFF2 antibody [EPR6385] ab124775

Recombinant RabMAb

1 Image

Overview

<b>Product name</b>	Anti-TMEFF2 antibody [EPR6385]
<b>Description</b>	Rabbit monoclonal [EPR6385] to TMEFF2
<b>Host species</b>	Rabbit
<b>Tested applications</b>	<b>Suitable for:</b> WB <b>Unsuitable for:</b> Flow Cyt, ICC/IF, IHC-P or IP
<b>Species reactivity</b>	<b>Reacts with:</b> Human
<b>Immunogen</b>	Synthetic peptide corresponding to residues in the extracellular domain in TMEFF2 (Human)
<b>Positive control</b>	HeLa, SW480 or Hman prostate lysates
<b>General notes</b>	Mouse, Rat: We have preliminary internal testing data to indicate this antibody may not react with these species. Please contact us for more information.

Our RabMAb<sup>®</sup> technology is a patented hybridoma-based technology for making rabbit monoclonal antibodies. For details on our patents, please refer to [RabMab<sup>®</sup> patents](#).

**We are constantly working hard to ensure we provide our customers with best in class antibodies. As a result of this work we are pleased to now offer this antibody in purified format. We are in the process of updating our datasheets. The purified format is designated 'PUR' on our product labels. If you have any questions regarding this update, please contact our Scientific Support team.**

This product is a [recombinant rabbit monoclonal antibody](#).

Properties

<b>Form</b>	Liquid
<b>Storage instructions</b>	Shipped at 4°C. Store at -20°C. Stable for 12 months at -20°C.
<b>Storage buffer</b>	pH: 7.20 Preservative: 0.01% Sodium azide Constituents: 59% PBS, 40% Glycerol, 0.5% BSA
<b>Purity</b>	Protein A purified
<b>Clonality</b>	Monoclonal

Clone number	EPR6385
Isotype	IgG

## Applications

Our [Abpromise guarantee](#) covers the use of **ab124775** in the following tested applications.

The application notes include recommended starting dilutions; optimal dilutions/concentrations should be determined by the end user.

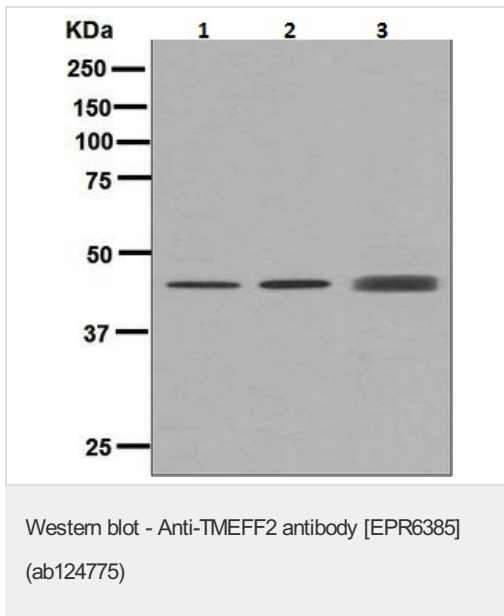
Application	Abreviews	Notes
WB		1/1000 - 1/10000. Detects a band of approximately 44 kDa (predicted molecular weight: 41 kDa).

**Application notes**                      Is unsuitable for Flow Cyt, ICC/IF, IHC-P or IP.

## Target

<b>Function</b>	May be a survival factor for hippocampal and mesencephalic neurons. The shedded form up-regulates cancer cell proliferation, probably by promoting ERK1/2 phosphorylation.
<b>Tissue specificity</b>	Highly expressed in adult and fetal brain, spinal cord and prostate. Expressed in all brain regions except the pituitary gland, with highest levels in amygdala and corpus callosum. Expressed in the pericryptal myofibroblasts and other stromal cells of normal colonic mucosa. Expressed in prostate carcinoma. Down-regulated in colorectal cancer. Present in Alzheimer disease plaques (at protein level). Isoform 3 is expressed weakly in testis and at high levels in normal and cancerous prostate.
<b>Sequence similarities</b>	Belongs to the tomoregulin family. Contains 1 EGF-like domain. Contains 2 Kazal-like domains.
<b>Post-translational modifications</b>	N-glycosylated. Contains chondroitin sulfate glycosaminoglycans. A soluble form (TMEFF2-ECD) is produced by proteolytic shedding. This shedding can be induced by phorbol ester or proinflammatory cytokines such as TNFalpha, and is mediated by ADAM17.
<b>Cellular localization</b>	Secreted and Membrane.

## Images



**All lanes :** Anti-TMEFF2 antibody [EPR6385] (ab124775) at 1/1000 dilution

**Lane 1 :** HeLa lysate

**Lane 2 :** SW480 lysate

**Lane 3 :** Human prostate lysate

Lysates/proteins at 10 µg per lane.

#### Secondary

**All lanes :** HRP labelled Goat anti Rabbit at 1/2000 dilution

**Predicted band size:** 41 kDa

**Observed band size:** 44 kDa

[why is the actual band size different from the predicted?](#)

**Please note:** All products are "FOR RESEARCH USE ONLY. NOT FOR USE IN DIAGNOSTIC PROCEDURES"

#### Our Abpromise to you: Quality guaranteed and expert technical support

- Replacement or refund for products not performing as stated on the datasheet
- Valid for 12 months from date of delivery
- Response to your inquiry within 24 hours
- We provide support in Chinese, English, French, German, Japanese and Spanish
- Extensive multi-media technical resources to help you
- We investigate all quality concerns to ensure our products perform to the highest standards

If the product does not perform as described on this datasheet, we will offer a refund or replacement. For full details of the Abpromise, please visit <https://www.abcam.com/abpromise> or contact our technical team.

#### Terms and conditions

- Guarantee only valid for products bought direct from Abcam or one of our authorized distributors