

Product datasheet

Anti-TMEM185A antibody ab130101

[2 Images](#)

Overview

Product name	Anti-TMEM185A antibody
Description	Rabbit polyclonal to TMEM185A
Host species	Rabbit
Specificity	It detects endogenous levels of total TMEM185A protein.

Tested Applications & Species

Application	Species
ICC/IF	Human
WB	Human

[See all applications and species data](#) ↓

Immunogen	Synthetic peptide corresponding to a region within internal amino acids of Human TMEM185A (Q8NFB2).
Positive control	K562 cell extract, MCF7 cells

Properties




Form	Liquid
Storage instructions	Shipped at 4°C. Store at -20°C. Stable for 12 months at -20°C.
Storage buffer	pH: 7 Preservative: 0.02% Sodium azide Constituents: 49% PBS, 50% Glycerol (glycerin, glycerine), 0.88% Sodium chloride PBS is without Mg ²⁺ and Ca ²⁺
Purity	Immunogen affinity purified
Purification notes	The antibody was affinity-purified from rabbit antiserum by affinity-chromatography using epitope-specific immunogen.
Clonality	Polyclonal
Isotype	IgG




Applications

The Abpromise guarantee

Our [Abpromise guarantee](#) covers the use of **ab130101** in the following tested applications.

The application notes include recommended starting dilutions; optimal dilutions/concentrations should be determined by the end user.

 Guaranteed Tested applications are guaranteed to work and covered by our Abpromise guarantee.	 Predicted Predicted to work for this combination of applications and species but not guaranteed.	 Incompatible Does not work for this combination of applications and species.
--	--	--

Application	Species
ICC/IF	 Human
WB	 Human
All applications	 Mouse

Application	Abreviews	Notes
WB		1/500 - 1/1000. Predicted molecular weight: 41 kDa.
ICC/IF		1/100 - 1/500.

Target

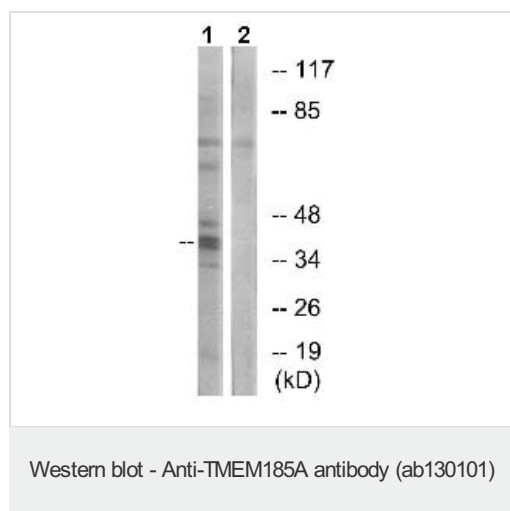
Sequence similarities

Belongs to the TMEM185 family.

Cellular localization

Membrane.

Images

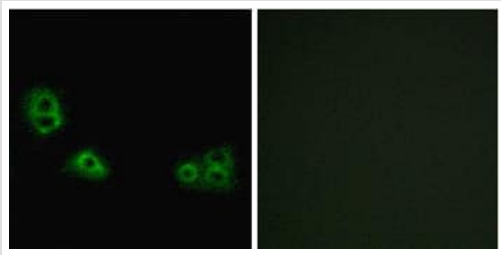


All lanes : Anti-TMEM185A antibody (ab130101) at 1/500 dilution

Lane 1 : K562 cell extract

Lane 2 : K562 cell extract with synthesized peptide

Predicted band size: 41 kDa



Immunocytochemistry/ Immunofluorescence - Anti-TMEM185A antibody (ab130101)

ab130101, at a dilution of 1/100, staining TMEM185A in MCF7 cells by Immunofluorescence. The picture on the right was treated with synthesized peptide.

Please note: All products are "FOR RESEARCH USE ONLY. NOT FOR USE IN DIAGNOSTIC PROCEDURES"

Our Abpromise to you: Quality guaranteed and expert technical support

- Replacement or refund for products not performing as stated on the datasheet
- Valid for 12 months from date of delivery
- Response to your inquiry within 24 hours
- We provide support in Chinese, English, French, German, Japanese and Spanish
- Extensive multi-media technical resources to help you
- We investigate all quality concerns to ensure our products perform to the highest standards

If the product does not perform as described on this datasheet, we will offer a refund or replacement. For full details of the Abpromise, please visit <https://www.abcam.com/abpromise> or contact our technical team.

Terms and conditions

- Guarantee only valid for products bought direct from Abcam or one of our authorized distributors